

The Calm Before the Storm



Bennington College Office of Alumni Relations <alumnirelations@bennington.edu> Aug 12, 2021

BENNINGTON ALUMNI NEWS

A Newsletter
for Alumni
and Friends



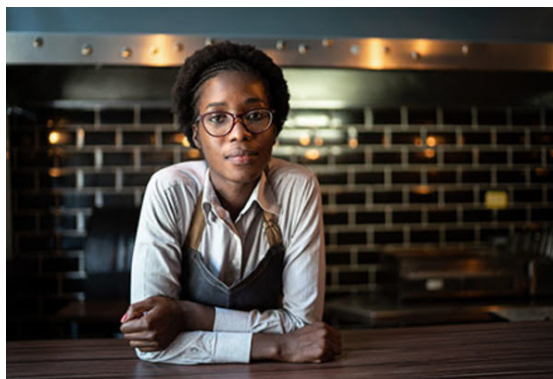
The Calm Before the Storm

From outdoor theatre productions to art scholarship and more, on Bennington College's Instagram, get a [behind-the-scenes look](#) at students' summer Field Work Term experiences.



Share Your Advice

As Bennington prepares to welcome the Class of 2025 to campus, [alumni are invited to share](#) their favorite Bennington places, experiences, and advice with the next generation of Bennington students.



PUBLISHERS
WEEKLY

The Costs of Sexual Harassment

Eve Mefford '20 has [co-authored the publication](#), "Paying Today and Tomorrow: Charting the Financial Costs of Workplace Sexual Harassment," a publication produced by the Institute for Women's Policy Research and TIME'S UP and [covered by BloombergNews](#).



Supporting Academic Experience

Bennington College [has received](#) a \$300,000 two-year grant from the Davis Educational Foundation, which will support restructuring the academic leadership team to strengthen the student experience.

Literary Accomplishments

Mutiny by faculty member Phillip B. Williams and *Philomath* by Devon Walker-Figueroa '15 [have been selected](#) by *Publishers Weekly* as two of their Top Ten poetry titles for Fall 2021. "Waking Up at Night" by Zubair Siddiqui '20 [has been published](#) in the literary journal *Quarterly West*.



"I have so much love to give"

Biborka Beres '22, Tamar Giligashvili '21, Imara Glymph '23, David Guzman '21, Nosizo Lukhele '22, Alisha Shrestha '23, and Stefanos Zogopoulos '23 contributed their talent and technical help to [this music video](#) for the band Occurrence.

Announcements:

The Alternating Identities of Shirley Jackson

The Letters of Shirley Jackson, edited by her son Laurence Jackson Hyman '64 in consultation with Bernice M. Murphy, [was reviewed](#) in *The New York Times*.

Sketches

Maya Knell '16 guest stars as Camille on [season 2, episode 5](#) of Netflix's *I Think You Should Leave with Tim Robinson*.

Serving a Community of Artists

The Irene Borger Endowed Scholarship in Creative Writing at California Institute of the Arts has been established in honor of **Irene Borger '71**. Fittingly, the scholarship was awarded to a writer who is interested in serving a community of artists, since Borger, an established writer, founded the Writing Workshop at AIDS Project Los Angeles, and through the Herb Alpert Award in the Arts, has supported the work of dozens of daring mid-career artists over the past 27 years.

Taxilandia

The *New Yorker* [highlighted](#) this site-specific performance piece by **Modesto Flako Jimenez '06**, in which audiences are treated to a driving tour of Bushwick in Jimenez's cab.

Tell us your news

We'd like to hear from you! Share your news, let us know what's new, and tell us what you're doing! [email us](#) for the opportunity to be featured in the newsletter, future social media, and Bennington Magazine.

Estate and Charitable Giving in a Challenging World Webinar

In simple language, [Estate Attorney Marty Finn](#) outlines the basics to ensure you protect your assets. Please contact [Laurey Goldberg](#) with any questions or concerns.

Events:

August 17 | Defending Marginalized History | Virtual Event

Peggy King Jorde '80, an expert on memorializing African burial grounds, [will lead a virtual lecture and slideshow](#), alongside a trailer for her 2022 documentary *Story of Bones*. This event is sponsored by the Martha's Vineyard chapter of the Association for the Study of African American Life and History.

August 23 | Virtual Summer Open House: International Student Spotlight | Virtual Event

Know an international high school student who would be a great fit for Bennington College? [Encourage them to join](#) this info session, student-led virtual tour, and an application and financial aid session.

Through October 31 | *Mary Ruefle: Erasures* | Robert Frost Stone House Museum

Mary Ruefle: Erasures, the first solo exhibition of visual work by Vermont State Poet Laureate **Mary Ruefle '74**, is [currently on view](#). An [opening reception](#) with Ruefle will be held on August 20 from 4:00-6:00 pm. On August 18 from 4:00-5:00 pm, Mary Ruefle [will participate](#) in a Facebook Live interview with Mark Wunderlich, Director of the Bennington Writing Seminars.

Bennington College | Office of Alumni Relations

One College Drive | Bennington, Vermont 05201-6003

802-440-4681 | [Give Now](#) | bennington.edu/alumni