

MRS ARCHIBALD R MURRAY
100 LASALLE STREET
NEW YORK NY 10027

October, 1982
Volume 15, Number 1

Quadriille

For Alumni & Friends of Bennington College



Photograph by Steven W. Alsbach '82

President Michael K. Hooker and Vice President James Vanderpol literally and symbolically tug in the same direction. The scene is the annual raft race on the Walloomsac River, sponsored as a fall orientation event by the Student Services Office. Others in the photo are Dave Finnegan, activities coordinator, and Patrick McCreary of the Dance-Drama faculty.

Non-Profit
Bulk Rate
U.S. Postage Paid
Bennington College

update



Fifth annual Belitt lecture

Irving Howe, author, editor, critic and historian, delivered the fifth annual Ben Belitt lecture on October 4; the title was "The Making of a Critic." The text will be published in the Bennington Review and a chapbook will be published, along with others in the endowed series, which honors Belitt (who can be seen at right in the audience) and the late William Troy. Howe's new book, *Along the Margin: An Intellectual Autobiography*, is being published this month by Harcourt Brace Jovanovich.

Calendar of Bennington events

October 22

Arturo Vivante of the Literature faculty will read from his works at the home of Sandra Brodsky, 1 Gracie Terrace, New York City, at 8 p.m. For information call 212 249-2279.

October 26

Major Theatre Benefit. "A Doll's Life" starring George Hearn and Betsy Joslyn directed by Harold Prince. Book and lyrics by Betty Comden and Adolph Green. Mark Hellinger Theatre, 237 West 51st Street at Broadway, New York. For information call Ruth Nicholson at 212 832-8056.

November 9

Boston Phonothn. For information call Cornelia Makepeace 617 354-5386.

November 18

David Felix will speak on "Co-existing with Karl Marx," at the home of Jane Bram, 970 Park Avenue, New York City, at 8 p.m. For information call Marianne Schnell 212 535-9499.

January 3, 1983

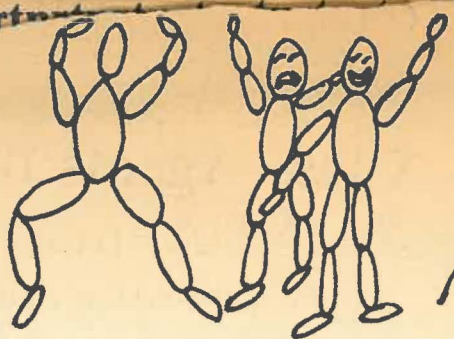
February 8, 1983

Non-Resident Term begins Concert at Christ & St. Stephen's Church, New York City, of spatial music featuring two of Henry Brant's students, Linda Bouchard '79 and Daniel Levitan '76, with mezzo-soprano soloist Kim Wheeler '72. More details in the December issue.

March 7, 1983

May 13-15, 1983

Spring Term begins Inauguration of President Michael K. Hooker, Reunion '83, and Parents Weekend.



Employment opportunities sought

Due to national economic conditions, jobs for anyone are scarce nowadays. Yet Bennington students still need to work during the NRT. Recognizing this, the NRT staff at Bennington is looking for additional paid positions which maintain the program's educational purposes.

Bennington students provide talented temporary help as writers, researchers, lab technicians, teachers, artists, and administrative assistants. The NRT program needs your help to secure more professional

opportunities for students. If you have leads, or can offer a paid position during the NRT (January 3 to February 25), please take a moment to fill out the form below and return it to:

Alice T. Miller, Director
Office of Student Affairs
Bennington College
Bennington, Vermont 05201
802 442-5401, Ext. 105 or 345

HELP NRT WORK FOR BENNINGTON STUDENTS

Name of business _____

Address _____

city

state

zip

Contact person _____ Phone _____

Type of job for student _____

Skills required _____

Quadrille contents

October, 1982

'Bridging Capital' campaign	3
Donald Brown Fund established	3
An interview with	
President Michael Hooker	4,5
Eleven join faculty	6
The July Program: Photo Report	7
Obituaries	8
Annual Fund Donor Book	A1—A8
Class Notes	9—14
Faculty Notes	16,15
Crossett Column	16

QUADRILLE is published bimonthly (February, April, June, August, October, December) for friends and alumni of Bennington College. Michael K. Hooker, President.

Editor: Tyler Resch, Director of Publications.
Assistant Editor: Lynn Hood '78, Director of Alumni Relations. Compiler of Faculty and Class Notes: Florence Burgraf.

Mailed from Pittsfield, Massachusetts. Postmaster: Send address changes to Bennington College, Bennington, Vermont 05201.

All photographs in this issue, except where otherwise credited, are by Steven W. Albahari '82.

Donald Brown Fund established

Bennington College is pleased to announce the establishment of the Donald Brown Memorial Fund for Faculty Research. The new Fund is a result of an expressed interest on behalf of the College's late Dean of the Faculty by his friends both on and off the campus, and after discussions with several persons including his wife Rae.

Don Brown died at the age of 51 March 19 at Albany Medical Center Hospital after suffering a cerebral aneurysm at his home.

There seemed to be no more fitting tribute than to establish a fund with which to encourage faculty research. As Dean of the Faculty, by both word and deed, he had expressed an intense interest in the faculty and its professional activities.

Income from the fund will be used to provide an annual award of about \$5,000 to support an individual faculty member's research activity. The award will be made by the incumbent Dean of the Faculty; individual faculty members will not be eligible for more than one award every three years.

It is expected that contributions to this special fund — from Don Brown's friends, colleagues, students, faculty and trustees, both at Bennington and elsewhere — will be forthcoming now that a plan has been formed.

Contributions may be sent to Bennington College in care of Patricia Barr, Development Director.

The Trustees of Bennington College, meeting April 15-17 this year, voted to include in their official record the text of a memorial minute out of respect to Dean Brown, and to send copies to members of his family. The text of their resolution follows:

Whereas, Donald R. Brown was a member of the Bennington College community for sixteen years, from 1966 until his death on March 19, 1982, it is the privilege of the Board of Trustees to honor his memory at this meeting.

Almost from the moment he arrived at Bennington to be a member of the Social Sciences Division, Don became a leader

Bennington Tomorrow

A campaign is launched

In early 1981 the Board of Trustees of Bennington College considered and endorsed a framework for restructuring the College's finances and developing capital. That framework outlined these specific goals.

1. Balanced Annual budgets.
2. An Annual Fund which raises \$1 million per year by 1987.
3. A greatly strengthened endowment.
4. Significant capital funds to maintain and improve the physical plant.
5. Innovative program development in each of the College's academic divisions.

In recognition of Bennington's significant development needs, the Board of Trustees vigorously sought a new President who could provide both educational and financial vision and strong leadership. Michael K. Hooker was appointed the eighth president of Bennington College in April, 1982, and began work on July 1. In his first three months in office, President Hooker has embraced the Board's framework and developed a strengthened five-point plan for financial stability.

The College is now ready to embark on an ambitious program in order to reach its goals. This "bridging capital" will bridge Bennington from a period of deficit spending into a period of self-sustained balanced budgets.

These funds will:

1. Assure the resumption of financial equi-

librium, using money over a specific time frame to balance the annual operating budget without deferring more maintenance needs.

2. Provide a model of leadership to encourage an ever-widening base of financial support.
3. Instill an aura of confidence about the future direction of the College, so that new friends can be made among individual philanthropists, corporations and foundations which are not now Bennington connected.

The most important of the Trustees' goals, that of developing a major endowment, can only be achieved if it is launched from the strong base of a balanced budget which these funds will be necessary to insure.

Bennington is pleased to announce that the Trustees ratified the "Bridging Capital Campaign" during their October meeting and as of October 3, 1982, \$650,000 of the goal has been generously pledged. Efforts are being made to secure additional pledges from the College's Trustees and closest friends.

It is clear that Bennington College is at a point in its history when the direction it takes in coming months and years will be critical. Bennington has become an accepted leader in American higher education, having achieved an enviable reputation for academic excellence as well as pioneering innovation. Now at age fifty, the College looks to its many friends, trustees and alumni for significant support to underwrite a campaign that will place it first on a stable financial footing and then move it into a future of long-range stability and security. The College must, in other words, match with financial support its academic reputation.

For more information on the campaign please call Bennington College Development Office: (802) 442-5401 Ext. 366.

Class Agents in place for '83 Annual Fund

By Hudas Schwartz Liff '47

For the second year in a row, the 47 classes of Bennington College alumni have a class agent system in place to help with the solicitation for the very successful Annual Fund. We are most grateful to these alumni who have accepted this responsibility.

Of the 47, just over half of the agents have accepted this challenge for a second year. This helpful group comes from such diverse places as Vermont, New Hampshire, Massachusetts, Connecticut, Pennsylvania, Tennessee, Illinois, Michigan, South Dakota, California, Washington, D.C., and Canada.

It is also the first time we have had a married couple acting as co-agents; and between 1972 and 1982, five of the agents are male. Each agent is busy this fall completing his or her own letter of solicitation, and this year we will also be asking for news for *Quadrille* and for a Reunion Newsletter.

Cornelia Ward Makepeace '56 and myself have had a good time making our phone calls. It took six weeks of continued calling to complete the task, but it is well worth the effort in terms of rewards to be reaped for Bennington. Further news will be forthcoming in *Quadrille*.

In case anyone is counting, the figure of 47 is composed of the 46 graduating classes since the first one in 1936, plus an agent, David Crowell, for the many Special Students who have attended Bennington and for whom there is no appropriate class year.

profile



Michael K. Hooker at the helm: an interview

Since his arrival at Bennington in July, President Michael K. Hooker has brought a sense of contagious enthusiasm to the campus. His tone is positive, his approach to problems is to ask what opportunities are presented.

The image he conveys for Bennington is that of "a new beginning," of a college whose philosophy is right for the 1980s and which possesses ideals "whose time has returned." He projects Bennington as a college of national leadership, as an excellent liberal arts antidote to the vocationalism that pervades much of American higher education these days.

Hooker came to Bennington with full knowledge of its financial problems, he told his first faculty meeting early in September. But he said that his experience thus far made him "more confident than ever that its future is sound." He told of "an enormous wealth of good will for Bennington on which we can draw."

His approach is direct, his tone is earnest, his choice of words articulate, and his demeanor candid. "I haven't brought with me any commitment to change Bennington College into Johns Hopkins," he reassured the faculty. "Nor do I regard my opinions as any more important than anyone else's." He characterized his presidential style as "very non-autocratic and non-authoritarian."

Because of Bennington's recent history of annual budget deficits — funded by benevolent trustees or canceled out by borrowing — and because of the absence of a substantial endowment, President Hooker has placed initial priorities on finance and development.

"There is nothing magic or mysterious about putting Bennington on its feet financially," he said. "It needs about \$40 million in endowment, and I am confident that that endowment can be built. It will probably take ten years ..."

The initial key is implementation of the "bridging capital" concept first proposed by the Board of Trustees a year ago (it is described in more detail by Development Director Pat Barr on Page 3 of this issue).

Bridging capital is basically a transition period during which the Trustees and other close friends

of Bennington will fund a diminishing series of anticipated deficits over the next three years leading to a time when endowment can be accumulated. The bridging capital will also be used to pay for a series of deferred maintenance projects which were authorized by the Trustees. Once Bennington can demonstrate that it has a balanced budget, Hooker anticipates that several doors will open among corporate sources of funding and also among private foundations.

"There is in this country a very large reservoir of good will toward Bennington," Hooker said, "but we won't receive support (from private foundations especially) until we show them that we have a balanced budget ... If bridging capital is put in place, all other elements of the plan will fall into place."

One long-range and widely participatory project President Hooker wants to launch is a thorough examination of Bennington's education in the present and the past, to chart its course for the future. This examination, which will involve colloquia and discussion among all members of the Bennington family, will be carried out in the context of looking at the purposes of liberal arts education in general and at how the College should be educating students for the world of the future in which they will be living.

The end result, he said, will not necessarily be a document or a set of new theses, but rather "the product will be the change that takes place in us ... the fruit of our labor will become apparent over the next fifty years."

The new president has been reaching out to all constituencies — the faculty, students, alumni, parents, the local community, the administration. He has lined up an extensive traveling schedule and has met already with alumni and others in Los Angeles, San Francisco, New York and Chicago. He has scheduled a series of "fireside chats" in the student houses and has been visible at many campus events, academic and otherwise. He expects to be selecting members of a President's Cabinet whose advice can be sought on various issues of financial or classroom concern.

Following are excerpts from a *Quadrille* interview with Michael Hooker:

Have you experienced any culture shock in adjusting from straight-laced Johns Hopkins to unorthodox Bennington?

I think I have experienced so much culture shock that I am not aware of how much culture shock I've experienced. I am still in the midst of it.

What do you perceive as Bennington's major strengths?

The major strength is the quality of the education, that is what goes on in the classroom between the faculty member and the students. I have truly never been associated with an institution where I thought the quality of education is remotely approximated with what I think I find here. Now obviously it is a little bit early for me to make a final assessment on that. But I've given what students tell me and what faculty tell me and especially what alumni tell me because I've talked really more in depth with them than anybody else. I'm just completely gratified, inspired by what I see, and that clearly is our greatest strength.

The second greatest strength is the marriage of the experiential aspects of knowledge with the conceptual aspects of knowledge which you find when you interweave the arts with the traditional liberal arts academic or scholarly fields. Again, I don't know of any institution that does that nearly as well as Bennington. In fact most don't even try. What they do is have a school of the arts and graduates can take courses in the school of the arts, but there is not this interwoven fabric of arts and liberal arts and sciences that you find at Bennington. I really believe that that doesn't exist anywhere else, possibly Sarah Lawrence.

Its major weaknesses?

This is a small weakness, but it's a weakness, and that is that because we allow students to take whatever they want whenever they want it, we can't plan rationally in advance to be able to accommodate all the needs and interests of the students. For example we have a very popular psychology course now, a Freudian psychology course, that is stuffed to the gills with students. Now it's clear to me that the instructor there is



taxed to his limits, overworked, and he can't give individual quality of attention to each student that Bennington ought to be able to provide. On the other hand we don't want to deny access to courses to students, so we are sort of victims of our own success in that respect. So a weakness is that we can't really give in every course the quality of attention that students rightfully expect.

In spite of its financial problems, Bennington has maintained quality by holding to its student-faculty ratio and by adhering to its traditionally untraditional curriculum. Do you expect to press for any changes in these areas?

No change in the student-faculty ratio. There are some courses where the student enrollment is closed at a certain level and other students who would like to take those courses are not able to. In some cases this is pedagogically wise and in other cases I think that though you would lose a little bit by admitting a larger class, you lose more by closing some students out altogether and so I would like to persuade other people of my judgment or be persuaded by them that my judgment is wrong. But at least bring my judgment into a conformity with the judgment of other people, either by my changing my opinion or their changing their opinion.

In terms of curriculum, do you see any changes?

I don't see any curriculum changes, except everybody knows that I think computers will have a revolutionary effect on the arts in the future, and there is no better place than Bennington to begin to introduce undergraduates to the inter-relationships that are being established between computer science and the arts. So that's something that I would be happy to facilitate the faculty in doing if they are interested — and I have some reason to believe that they are.

Do you foresee any changes in the basic elements of the college, such as increased enrollment, or any departures in the makeup of the academic divisions?

We're at the greatest enrollment now that we've ever had and I don't see any reason for being this large, so it's conceivable that we would shrink a little in enrollment without shrinking in the size of the faculty so that we would actually have a more desirable student-faculty ratio than we even have now. But it should be pointed out — and I don't think people are aware of this — that in liberal arts colleges in this country the average student to faculty ratio, and I mean the good liberal arts colleges, not the second rung, is 16 to 1, and our student-faculty ratio is 8.5 to 1. It's almost half of what it is at the average major elite liberal arts college. Now that's a staggering figure, and I want

people to realize that it is not just advertising hype when we say what our ratio is. It's the truth. It is substantially different from any other institution.

You don't foresee any changes in the makeup of the academic divisions?

Any changes that would occur in the makeup of the academic divisions would have to come from the community itself, not from the president's office. I will urge and nudge and argue that we should constantly be assessing ourselves and looking at ourselves and planning for the future, but it's not something I can do on behalf of the community. It's something the community has to do for itself. And by community I include the alumni as well as the faculty and students.

Do you foresee the need for any new buildings or physical expansion of the campus?

Yes. The library is undersized for the size of our collection. We simply don't have anyplace else to put the books, so we need more storage space for books. We are also in desperate need of better study space for our students, so the library needs to be expanded both to accommodate more books and to provide study space for more students.

In addition, we need a wintertime athletic facility for students and there you are either talking about an indoor track or a swimming pool and I'm inclined to think that more people would make use of a pool than an indoor track, and so I think we need a swimming pool and an addition to the library. I would like to combine those two into one building and use the heat efficiency or heat storage capacity of the swimming pool to store solar-collected heat and then to heat the library with that. It seems to me an excellent energy-conservation concept, and since we need two new buildings there is every reason in the world to combine them into one and to separate, of course, the study space from the swimming pool but to use the swimming pool in its proximity to the library to store solar heat.

How do you look upon the VAPA building?

I have talked to a lot of people who have been on campus who have been also on other campuses in this country where there are other strong visual and performing arts programs, and nobody I have talked to has seen a facility that is even in the same league with VAPA. I think it's time for the community to recognize that VAPA is two things: one, it's a drain on our financial resources to pay for the building but, two, it is an educational facility that is unparalleled in this country. It doesn't have to be one or the other; it can be both and it is both. We need to recognize that and we need to glorify the fact that we have

VAPA as an educational facility. It is simply superb.

Reaccreditation is pending, and you have asked that the entire process be postponed a year. Why?

The accreditation visit was originally scheduled for the first of October and there was no way that I, coming in as president, could be an integral part of the accreditation self study. There simply was not time. And it seemed to me appropriate for the new president to be a part of the self study. Actually we have now launched a two-year self study which will be in much greater depth than the accreditation self study, but the accreditation self study will be a good springboard for the two-year self study that we have launched.

You are asking for an overall reappraisal or rethinking of the role of Bennington College in American higher education. How is this process going to work, and what do you expect the end results will be?

Well, the question is not exactly the right question. It's true that I have asked for a very detailed, intimate and thorough examination of Bennington's education in the present and a reflection of Bennington's education in the past in order to give us a sense of what Bennington's education should be in the future. I have asked that this be done in the context of looking in general at the purposes of liberal arts education and in the present, in the past, and what it ought to be in the future. Of course that can't be done without looking at the nature of the world that our students are likely to confront over the next fifty years and without asking ourselves in respect to that world how should a student be educated to operate within it. So I've asked the Bennington family — by that I mean the faculty, the students, the alumni and the trustees — to undertake among themselves a dialogue and an examination of the nature of Bennington's education and what it ought to be in the future.

This is a project that, so far as I know, no other college has ever undertaken. It's one that really should excite the whole higher education community as well as the Bennington community because even those institutions that have recently undergone substantial curriculum reform such as Harvard, Stanford, Johns Hopkins and Yale, are I know not entirely satisfied that they have produced the ideal curriculum for themselves. And so the question still remains how ought students to be educated for the future. I think that the higher education community in this country will be looking closely at Bennington's self examination to see the conclusions and observations that we come up with. It's an activity that also will draw the Bennington family together, I should think, in a renewed sense of vitality and purpose and commitment to what Bennington is.



President Hooker at a student dining table with his wife Anna, left, and their eight-month-old daughter, Alexandra.

Photograph by Noa Ben-Amotz '81

Eleven join faculty; fall enrollment a record 640

Eleven new members joined the faculty this fall as Bennington launched its 51st academic year with a record enrollment of 640 students and a new president.

Three of the eight appointments have been made in the Literature and Languages Division: author Joe McGinniss is teaching non-fiction prose, Victoria Kahn, comparative literature, and Octavio Armand, Spanish.

McGinniss, author of a forthcoming book on the Dr. Jeffrey McDonald murder case, replaces novelist Nicholas Delbanco, who is on leave this term. His books include *Going to Extremes* (1980), *Heroes* (1976), *The Dream Team* (fiction, 1972), and *The Selling of the President* (1969). McGinniss has lectured at Harvard, Princeton, Iowa, Williams College, the University of Texas, and the Bennington writing workshops. Bennington designated him as its Hadley Fellow for the fall term.

Victoria Kahn, who received a Ph.D. in comparative literature from Yale in 1979, has taught graduate students at Johns Hopkins University and literature at Yale. She has been the recipient of a Mellon post-doctoral fellowship in the humanities and a Fulbright-Hays Fellowship in Paris. She is the author of several scholarly essays including "The Sense of Taste in Montaigne's Essais," and "Stultitia and Diatribe: Erasmus' Praise of Prudence."

Octavio Armand specializes in Latin American literature and received a doctorate from Rutgers University in 1975. He has taught at Teachers College of Columbia University, Montclair State College, and Swarthmore College. He served on the editorial board of *Mester*, published by the Department of Spanish and Portuguese at the University of California at Los Angeles, and was the associate editor of *Escalios* in Los Angeles. He is the author of many critical books and essays on Latin American literature.

Joining the Social Science Division are Gail Russell and Elizabeth Rapaport.

Russell, who recently completed a doctoral dissertation titled "The Politics of Industrial Conversion: The Case of the North of France," at Princeton, is teaching politics. She has taught at Wesleyan, Swarthmore and Princeton, and has received several awards including a De Tocqueville fellowship for field work in France and a Danforth



The annual line-up for identification photographs produces a variety of student expressions.

graduate fellowship.

Rapaport, who teaches political philosophy, received a Ph.D. from Case Western University in 1971, and has held teaching positions at Boston University, Brown University, the University of Southern California, and the City College of New York. The author of many scholarly essays, her forthcoming work is titled "Marx and Ethics Today," a Hastings Center Volume. Bennington designated her its Mellon Fellow for the fall term.

Two teachers have joined the Drama Division, Andrew Neil and Roger Sorkin.

Neil, who trained at the Royal Academy of Dramatic Arts in London where he received the Tait Memorial Prize for General Excellence, is teaching scene study. Working five seasons as an actor, he appeared in plays at the Glasgow Citizens Theatre, the Leicester Phoenix Theatre, and in London at the Royal Court. As a writer

he worked for Thames Television and the BBC TV External Services. For the past eight years he has been a director at the Royal Academy of Dramatic Art and at the London Academy of Music and Drama.

Sorkin, with a Ph.D. in English and American literature from Harvard, is teaching script text analysis. He has taught at Queens College, Harvard, Radcliffe, and Southeastern Massachusetts University.

Martin Silverman joins the Visual Arts Division as a sculpture teacher. He has taught at the New York School for Painting and Sculpture and at Baruch College. He received a bachelor of arts degree from Hofstra and a master of fine arts from Pratt Institute. His work has been exhibited in many one-man shows and collections in New York, Washington, Chicago, and Boulder.

Robin Evans, with a doctorate in architecture from the University of Essex, is teaching architecture with the Visual Arts Division. Awarded a Nuffield research fellowship, Evans was the architect to the ministry of local government in Nairobi, Kenya, and he has taught at the Polytechnic of Central London and Cambridge University School of Architecture.

Two faculty are teaching music, Arthur Brooks and David Titcomb.

Brooks, who has been a teaching assistant for several years in the Black Music Division, received a B.A. from Antioch College and has studied independently with Bill Dixon and Cecil Taylor. A member of the Boston Art Ensemble, Brooks received a National Endowment for the Arts Composition Grant in 1976, and his recordings include "Brute Force" (1969) and "Nightcaller" (1978).

Titcomb, who received a master of music degree from Yale University, is teaching brass. He has performed with the New York City Ballet Orchestra, the Metropolitan Opera Orchestra, the Hudson Valley Philharmonic Orchestra, the Joffrey Ballet, and the Dance Theatre of Harlem. Titcomb taught a brass repertoire class at SUNY, Purchase, and founded the Purchase Brass Quintet. He has been recorded on Titanic Records.



An expressive moment during a Fall orientation program with Maxine Neuman of the music faculty.

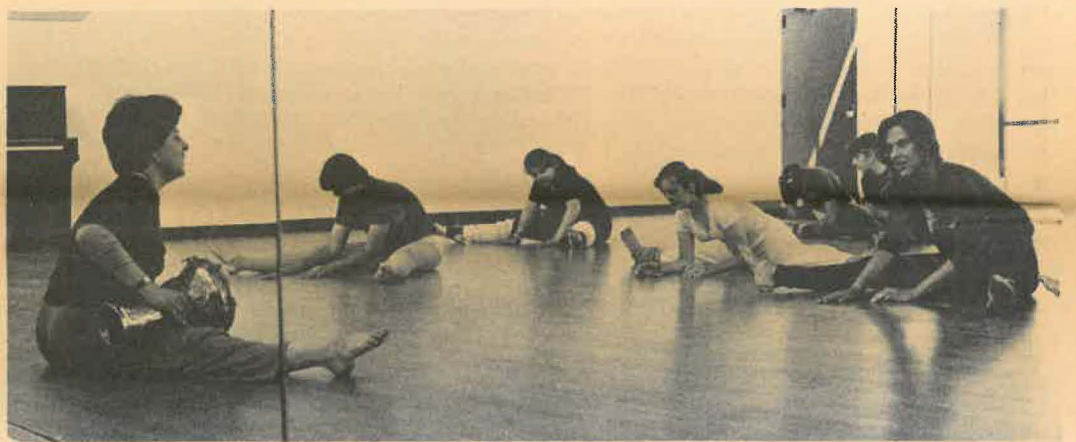


A PHOTO REPORT

The July Program '82

Photographs, clockwise from above, represent a range of July Program '82 activities: A dance performance workshop; teacher Ellen Robbins taps a drum in dance rehearsal; a music performance workshop; a group portrait of all participants in front of Commons; program director Edward Hines '81 with head resident Ron Singer; Murray Barsky '83, a faculty member in music; Jennifer Smith of Bennington at work in an art studio. There were 95 students of high school age in the 1982 program. An innovation for 1983, the fourth year of the program, sponsored by Bennington's Admissions Office, will be a pre-medical studies program.

— Photographs by Steven W. Albahari '82



obituaries



Jessie K. Emmet

Bradford Bachrach

Former Trustee chairman dies

Jessie K. Emmet, a Bennington Trustee from 1948 to 1975, who served two terms as chairman of the Board, died of cancer September 22 at her home in Manhattan, a day before she would have turned 73. A funeral service was held September 24 in St. James Episcopal Church, Madison Avenue and 71st Street.

Besides her interest in Bennington, she was a leader in child development and education, was a member of the Board of Trustees and chairman of the Council on the Foundation for Child Development. She was also a director of the Aspen Institute's fellowship program from 1974 to 1981. With Ernest Beyer, former U.S. Commissioner of Education, also a former Bennington Trustee, she co-chaired the Aspen Institute's Program on the First Twenty Years of Life.

She was educated in public and private schools in Seattle, Washington, and at St. Margaret's School in Waterbury, Connecticut. From 1927 to 1932 she was assistant fiction editor of *Collier's* magazine, and as a freelance writer published works of her own fiction. In 1932 she was married to Dr. Henry A. Schroeder, and was divorced from him in 1944.

From 1944 until his death in 1969 she was married to Richard Stockton Emmet, a partner in the New York law firm of Emmet, Marvin & Martin.

She was also a director of the Family Service Association of Nassau County, a director of the New York chapter of the American Red Cross, and a director of the Design Science Institute. She belonged to the Colony and Cosmopolitan clubs of New York.

Survivors include three sons, Henry A. Schroeder Jr. of Northampton, Massachusetts; David A. Schroeder of Bedford, New Hampshire, and Robert Emmet of Cleveland; and a daughter, Katherine True of Manhattan; a stepson, Richard S. Emmet Jr. of Westford, Massachusetts; eight grandchildren and six step-grandchildren.

The text of a "memorial minute" to be adopted by the Bennington Board of Trustees will be published in a subsequent *Quadrille*.

Marcia Sang Isaacs '57 died in New York City on July 14 after a long, valiant struggle against cancer. She is survived by her husband Lawrence and children Adam and Emily. Marcia worked for Brandeis University from the time she graduated from Bennington until just before her death. She ran the Brandeis Creative Arts Awards and the Brandeis House in New York City. A Marcia Isaacs Memorial Scholarship has been established by Brandeis University, Waltham, Massachusetts.

Writer John Gardner, 49, had many Bennington ties

Author John Gardner, whose most recent novel *Mickelsson's Ghosts* was published this past summer, was killed on September 14 in a motorcycle accident near his home in Susquehanna, Pennsylvania. He was director of the creative writing program at the State University of New York at Binghamton.

Gardner was a member of the Bennington faculty for three terms: during the 1974-75 academic year and again in the spring of 1976. He was the Distinguished Hadley Fellow in Literature during his full year at Bennington. He was also a founder, with Nicholas Delbanco, of the Bennington Summer Writing Workshops in 1977, and was a guest of the workshops in the summers of 1978 and 1979.

Age 49 when he died, he had gained a reputation as one of the most original, even dazzling, of contemporary American writers. He was controversial especially among fellow writers because of his 1978 book *On Moral Fiction*, which criticized other authors for various sins such as playing games with words rather than focusing on the moral and emotional conditions of their characters.

He characterized himself in many colorful ways. Indeed, he seemed to enjoy befuddling interviewers with contradictory opinions or descriptions of himself. In the final year of his life, several major interviews with him appeared in the media, portraying him as thoughtful, volatile, charming, haunting — a daredevil, fascinated by the mystery of death. His physical presence was arresting: the long white hair, the leather motorcycle jacket, the constant puffing on a pipe.

His connections with Bennington and Bennington College were deep-rooted. His wife of 23 years, Joan, remains in the Old Bennington home to which they moved in 1974; she teaches English at Mt. Anthony Union High School. He was recently divorced from his second wife, Liz M. Rosenberg '76, whom he met at Bennington. (On the Saturday of the week in which he was killed he was scheduled to be married to Susan Thornton, 32, who had been sharing his house in Susquehanna, and whom he had met at the Bread Loaf Writers Conference.)

John and Joan Gardner's two children still call Bennington home: Joel, 22, is working as a photographer in Burlington, Vermont, and Lucy, 20, is a student at the University of Buffalo. Joel's photographs illustrate *Mickelsson's Ghosts*.

Music played an important role in his life. While at Bennington he played horn with the Sage City Symphony; the Bennington College viewbook carries a photograph of John Gardner and Joel both playing horn in the 1976 Commencement orchestra, both wearing

The following is taken from a transcript of an interview with Bennington Faculty writer Nicholas Delbanco broadcast on National Public Radio stations the day after John Gardner's death. The interviewer is Noah Adams (A); Delbanco's comments are marked (D).

A — John Gardner's books were filled with dreams — a lot of nightmares too — constant reminders of the dragons and demons around us. When he used medieval imagery he would sometimes suddenly pull back and we would find ourselves in another plot back in the twentieth century. It was important to Gardner that writers do more than remind us of the unpleasant world.



Perry Adelman '79

John Gardner, left, speaks with former Trustee John G. McCullough during his appearance at the 1979 Bennington Writers Workshop in the Tishman auditorium.

top hats. Probably the best-remembered John Gardner connection with Bennington will be its setting for his novel *October Light*, which won the National Book Critics Circle fiction award in 1976. In it, he explored the combative relationship between an old brother and sister who live on a Vermont farm.

Grendel, published in 1971, first put him on the literary map. It was described by Richard Locke of the New York Times as "very funny, original and deft, altogether lovable, poignant, rich with thought and feeling." Then followed *The Sunlight Dialogues* in 1972, *Nickel Mountain* in 1973, as well as a collection of short stories, children's books, fairy tales, poetry and criticism.

Wrote Benjamin DeMott of Amherst College in the New York Times review of *Mickelsson's Ghosts* this past summer: "John Gardner's subjects as a novelist have ranged from the inner conflicts of a beleaguered monster (*Grendel*) to a brother-sister feud in contemporary Vermont (*October Light*). The strongest point of connection among his works of fiction is their unvarying hospitality to ideas."

One of the recent memorable interviews with Gardner appeared in the Washington Post July 25, written by Curt Supplee. It was headlined "John Gardner, Flat Out." The phrase is a quote from the author himself; it refers to motorcycle racing, when a rider puts

his head down near the finish line to pick up a couple of extra seconds by being less wind resistant. Said writer Supplee, it is "a word that comes up a lot when you ask people whether John Gardner is 'self-destructive.'"

Supplee's interview is a study of John Gardner the character, the raconteur "pursuing and pursued by his ghosts." The writer quotes Gardner as taking five different positions in one afternoon on his most controversial book *On Moral Fiction*: ("a. he should never have written it, b. he's glad he wrote it because it changed the shape of American fiction, c. the idea was inevitable anyway, d. the tone was deliberately caustic to get attention, and e. 'I don't think there's any anger. I think I was gentle. Think what I could have said!'").

Another significant interview appeared July 11 in the magazine of the Rochester Democrat & Chronicle, written by Stephen Wigler. Headlined "Gardner's Ghosts," it describes the author's weekly 200-mile treks on his Harley Davidson 1200 Electroglide motorcycle between Susquehanna and his hometown of Batavia, New York, "to do the chores" and to visit his parents. His father, John Gardner Sr., 71, suffered a paralyzing stroke and John Jr. would help him with physical therapy and read to him; a visit is poignantly detailed in the interview, his mother putting up tomatoes in quart jars and recalling how they used to read to John

Continued on Page 9

Delbanco remembers Gardner in an NPR interview

He wanted other writers to join him in reshaping the horrors of the time. He spoke of that time and time again to the many students he taught and to the friends he made.

D — His death was unnecessary, unpremeditated, an awful loss to those of us who knew him and who loved him.

A — Nicholas Delbanco, a fellow writer and teacher, brought John Gardner onto the staff of Bennington College in Vermont. Delbanco found Gardner a man who was constantly roaring into physical and literary whirlwinds.

D — Everyone I know who knew John was always warning him to take it easy, to be a more cautious caretaker

of his talent, to be less exuberant, less long at the party, less fast on the road, if you will, to husband his energies. But he really never knew restraint. He didn't play anything close to the vest or cautiously.

A — It is sadly ironic that he survived quite a serious battle with cancer to die on a motorcycle.

D — Yes. I remember going down to see him a few times when he was in the hospital. He assured me I think with absolute conviction that he had gotten over his fear of death, that whatever he was facing then was not something he any longer was frightened of. I remember even the last time I went to see him I couldn't find him in the hospital ... because he was so busily xeroxing in the

Continued on Page 9

class notes

'36

During the last two weeks of May **Hannah Coffin Smith** toured in Romania with the Connecticut String Orchestra, giving six concerts. The tour was sponsored by Friendship Ambassadors Foundation. "A great adventure!"

'37

Betty (Elizabeth) Beebe Klavun has recently done a large playground sculpture for the Betances Housing Development, commissioned by the New York City housing authority. Betty lives in Manhattan.

Carolyn Crossett Rowland is one of three new members to be named to the board of trustees of the Boston Symphony Orchestra. All were former members of the larger Board of Overseers. Crossie and her husband George live in Boston.

'38

Two sculptures by **Georgianna Greene Else** (professional name, **Jorjana Holden**) were part of the North American Sculpture Exhibition held during May-June at the Foothills Art Center in Golden, Colorado. Georgianna and her husband Robert live in Sacramento, California.

Nancy Elliott Kelly noted recently that she had just returned from a visit to Cambridge, London and Paris, and did not feel well enough to attend the reunion weekend. Nancy lives in Fair Lawn, New Jersey.

Suzanne Stockard Underwood spent part of this summer in France taking canal trips in the wine country.

'39

Dort (Dorothy) McWilliams Cousins was chair of the fifth annual Culinary Carnival in Sausalito, California (Dort's sister is the well-known French chef Julia Child). This was a benefit for Children's Garden, an agency that provides services for emotionally abused young children through treatment homes, education and research.

Jean Lee is enjoying retirement. She is a volunteer, two days a week, for the Democratic candidate to Congress in the second Nebraska district, "tough out here on Democrats!" Jean is also busy cataloguing a collection of antique postcards from 1900 through 1925. "It turns out to be a 'valuable collectible' which I have been making for years and only recently have become aware of. 'Deltiology,' or 'the study of small pictures' — Greek!" [Our librarian's dictionary reads: "The hobby of collecting postcards."]

Natalie Kimball McMillan wrote that she is glad she attended the 1982 reunion. "It was great!" Natalie lives in Wellesley, Massachusetts.

she is still designing houses in Connecticut and Vermont from her home in Guilford, Connecticut.

'42

Margaret Ramsey Meachem received a doctorate of musical arts degree from the University of Maryland at College Park early this summer. She was a member of Phi Kappa Phi honor society, received

Wildlife Sanctuary in Dorset, Vermont, founded by her parents.

'43

Jane Mengel Allen wrote that she has added a new hobby to those of sailing, fishing, gardening, and shelling. She is raising quail and pheasant. Jane, who lives in Glenview, Kentucky, goes to Sanibel, Florida, in March and to White Lake, Michigan, in the summer.

Annette Kolin Tarr wrote that she has been "working in stained glass for seven years, designing and creating autonomous panels (hung on windows like paintings) both here and in our winter home (for 12 years) of Oaxaca, Mexico. I exhibit locally and in the New York area." Annette lives in East Hampton, New York.

'44

Sally Litchfield Hein: Jac Hein's June 11 column in the Sierra Vista, Arizona, Herald-Dispatch was entitled "Reunion season." He wrote, among other comments: "My wife recalls the class reunion she attended at her alma mater... She says it was like Alice behind the looking glass. She found herself trying to match names with faces, hoping to remember people without being obvious and peering at name tags. For Sally it was a study in the aging process. She found it interesting to see how, after 15 years, fellow students had carried the years. And the teachers, how they looked. Even the trees and shrubbery on campus had grown and changed. She and the other alumni felt elated seeing each other because they had shared four wonderful years together."

'45

Elizabeth K. Harvey barely has spare time to maintain her home and mini-farm in Madison, Connecticut. "I'm up to my ears in volunteer work — boards of directors, etc. Reagan take note!"

'46

Ruth Bowman McCutcheon is still working as a Christian Science Practitioner with an office in Los Altos, California. "Three of our children are married and we are expecting our fifth grandchild. We're still flying our own plane, a Beechcraft Bonanza, around the country and to Mexico occasionally. We're now living in an adult community known as 'The Villages.' It's beautiful — surrounded by hills [San Jose]."

The July issue of *Dancemagazine* carried an article about the Skinner Releasing Technique perfected by the late **Joan Skinner**, who died in February, 1976. This form of improvisational dance has been used by the Seattle Music and Dance Ensemble, according to the article. The technique was devised after Joan had received an injury and was seeking a less strenuous form of dance training. It is based on scientific evidence that demonstrated that "a mental picture, or image, causes a firming of muscle fibers without actual movement of the muscles," and Joan's method uses images to train, inspire and prepare dancers for performance. This summer the ensemble sponsored and hosted an "August Festival of Improvised Art" funded by the National Endowment for the Arts.

'47

Friends of the late **Pat Beck** have been notified by her literary executors, Jane and Lucien Hanks, that her writings have been deposited in the Sophia Smith Collection at Smith College. This is an archive devoted to the literary works, letters, life histories, diaries and memorabilia of women, especially those



A sculpture, "The Necklace" (1979), by Jorjana Holden (Georgianna Greene Else '38). See Class Notes for '38.

'40

Lavina Kelly Falconer keeps busy as field trip arranger for the San Francisco Bay chapter of the California Native Plant Society. Lavina lives in El Cerrito.

'41

Diana Allyn Granbery reported that

the Newcombe scholarship, and was a graduate assistant. Peg studied in 1976 with Nadia Boulanger in Paris. She has been appointed for one year to the University of Maryland faculty to teach theory. During the summer she taught flute in Williamstown, Massachusetts, her home town.

In addition to her studies and teaching over the years in Berkshire County, she also helps to care for the Swampacres

Delbanco

Continued from Page 8

belly of the building somewhere. Although they had kept him to his bed he had managed to escape and keep at his work. Only a week or so after the operation he had his pipe in his mouth and his IBM on the bedside table. So he was an insatiable worker. He had extraordinary energy if not discipline.

A — How did he manage to do that, I always wondered, because almost every couple of months I would walk into a bookstore and there would be either a major work by John Gardner or something a little more frivolous like a child's fairy tale book?

D — He did it by working 20 hours a day, when he was working, and he was working all the time. I have never known anyone who was more dedicated a worker and more continually at his trade.

A — You had something you wanted to read.

D — Yes, I thought that I might read you something that he wrote, a couple of paragraphs that seem to apply both to his own life and his expectations

for other writers. This is as far as I know unpublished, and it seemed fiercely appropriate today:

"Every true apprentice writer has of course only one goal, glory. A shoddy writer wants merely publication. He fails to recognize that almost anyone willing to devote between 12 and 14 hours a day to writing — and there are many such writers — will eventually get published. But only the great writers will survive, the ones who fully understand their trade and are willing to take time and enormous risks. Always assuming of course that the writer is profoundly honest, and at least in his writing, sane. Sanity in a writer is merely this: however stupid he may be in his private life he never cheats in writing. He never forgets that his audience is, at least ideally, as noble and generous and tolerant as himself, or more so, and never forgets that he is writing about people. So that to turn characters to cartoons, to treat his character as innately inferior to himself, to forget their reasons for being as they are, to treat them as brutes, is disgraceful."

Gardner

Continued from Page 8

when he was an infant. The interview focuses on *Mickelsson's Ghosts* as heavily autobiographical; the subhead summarizes the theme: "The troubles that haunt the hero of John Gardner's newest book also shadow the novelist himself. Has Batavia's son penned an autobiography?"

John Gardner was born in Batavia July 21, 1933. He received his bachelor's degree in 1955 from Washington University in St. Louis, and a master's degree in 1956 as well as a doctorate in 1958 from the State University of Iowa. Besides Bennington, he had taught at Oberlin, California State University at Chico, San Francisco State University, Southern Illinois University, the University of Detroit and Northwestern University. He had been at Binghamton since 1978. He was founder and editor of a magazine called *MSS*, which he called "absolutely, flat-out the finest literary magazine going."

Funeral services were held at the First Presbyterian Church in Batavia on September 19.

of the 19th and 20th centuries.

Wrote the Hankses: "Of course, Pat said, 'I am a writer, not a woman writer!' but we feel she will enjoy the company. She joins a great roster of individuals who, like her, observed, loved, and took action in behalf of their fellow man: writers, poets, and artists; abolitionists and suffragettes; Sylvia Plath, Clara Barton, Margaret Sanger, Jane Addams, and many others."

Beth (Elizabeth) Olson Marshall is still heading the Ethel Walker School dance program, and also counseling students. Beth is working toward a second master's degree, in counseling. Her first master's, in dance, was awarded by Mills College in June 1948. Beth lives in Simsbury, Connecticut.

Kathleen Oliver Parker is taking a sabbatical from the design business to head the board of trustees of an historic house museum in the Morris-Jumel Mansion in New York. "Fascinating, and totally different."

Ella Russell Torrey is executive director of the Philadelphia Council for International Visitors, a quasi-government, non-profit group, which arranges professional programs for foreign visitors to Philadelphia.

'48

"A Family Affair" at Studio 703 in Port Jefferson, New York, included the work of **Mary Hellweg Reay** and her three children — two sons and a daughter. The biggest share of the exhibition was devoted to Mary's work, in oils and watercolors. Her son Stuart Lamson exhibited a half-dozen etchings and several pastels. Steve Lamson showed a selection of his pottery wares, and Frances Lamson Iberger showed

Musicales, performed for the 75th anniversary concert at the State Office Building, and has performed for groups all over the north country of New York State. Sally is also executive director for the Thousand Island Club/Resort at Alexandria Bay. She is the mother of five children: one lawyer, two stock-brokers, one teacher, and young Sally, who is a student at the State University of New York, Plattsburg.

'51

In February **Barbara Ushkow Deane** received a master's in business administration from Adelphi University. Her major was arts management.

'52

Diane Boyden Pessa phoned to say she and her husband **Albert** were on a talk show in August on Boston's WBZ Channel 4. During the show there were interviews with people in the audience, among them their daughter Tia who said, on TV, that she is attending Bennington College.

'53

Elizabeth Larson Lauer was kept busy in June judging "lots of competitions and such, plus one week of teaching students and their teachers in ensemble, ear training, theory, repertoire for the Connecticut branch of the Music Teachers Association." Liz wrote in mid-summer that she was preparing for a solo performance at Lincoln Center on September 14 at which she planned to play a work by Lionel Nowak. "Happy to have seen Julian DeGray and Sibyl Totah Belmont '55 at the Matthey

Nikolais on modern dance as indigenous

Alwin Nikolais, who attended the Bennington College Summer School of the Dance 1938-1940, and his Nikolais Dance Theater performed a special benefit at the Wilbur Theater in Boston one day in March. His comments to the Boston Herald American, March 12, were especially interesting:

"Modern dance is an indigenous art form of America ... It is a very powerful and strong art ... The idea was the unique gesture. You evolved your own movement.

"... The purest dance you'll see today is disco. Disco is more basic than ballroom dancing because it does not involve coupling. You operate out of your own compulsions." Nikolais is concerned now that American dance not lose its identity, "that it carries the seed of the unique gesture, which is the American way. Don't copy. Make the thing come out of you. Make the statement of self, which is the statement of mankind."

Nikolais won the Dance Magazine Award as well as the Grand Prize of the Paris International Festival of Dance and an Emmy in 1968. In 1978 he was invited by the French government to direct its national center of contemporary dance, and his tours have taken him all over the world. His latest recognition is the 1982 Capezio Dance Award for lifetime achievement in dance.

In April, Nikolais was in residence for three days at Middlebury College, conducting workshops and giving lectures and holding informal discussions.

several illustrations of jungle animals. Mary is described by *Newsday* as conservative, competent, her works being representational and traditional in feeling. Two watercolors were singled out as rising above the rest. In *Lemon Light* and *Pewter Blues* "she greatly enlarges the still-life scale so the lemons in the former and the eggs in the latter become giants. They burst the picture boundary and their super-realistic handling, as well as their treatment of light and form, give them a much more contemporary flavor ... This is especially true of *Lemon Light*, which in its handling of water color is fresh and choice."

'49

The mother-daughter team of **Sally Baker McAllaster**, vocalist, and Sally, flutist, presented a concert of traditional and modern American Folk Music at Constable Hall, Constableville, New York, on August 12. Mother Sally accompanied herself on the guitar. She is alto soloist at the First Presbyterian Church of Watertown, a performing member of Watertown Morning

Association conference held at Williams," she said.

Liz is now program chairman for two organizations in Fairfield County "and will do my best to see that American works are played." She expects to see more of her work being published this fall.

'55

Ellin Friedman Grossman completed her doctorate in education in 1979 and is an art educator, assistant professor at the University of Houston at Clear Lake City, Houston, Texas. Her daughter Amy is a second year medical student at Baylor College of Medicine, Kate is a junior at Swarthmore and Ruth a high school junior at St. John's. Ellin and her husband Robert, chairman of neurosurgery at Baylor, live in Houston.

In August, **Faith Bancroft Schrader** moved into a Hancock, New York, farmhouse which she renovated. Faith is vice president of Lota Tau, Beta Sigma Phi, in the Sidney area where they sponsor many service projects for the benefit of that area of the southern

tier of New York State. Carl is assistant school superintendent in Hancock.

Donna Bear Scott and her husband Jim moved to Los Osos, California, in March, 1981. Donna has attended classes at Cuesta College in San Luis Obispo "to get back into clay. We are starting a line of ceramics and other products. So at present, I am self-employed after years of different jobs." Jim works in technical illustration, ceramics and enamel on metal.

'56

Carol Friedman (Kardon) Fisher was married to Herbert Fisher, a lawyer, in September, 1981. They have moved from Gladwyne to their new house in Wynnewood, Pennsylvania. "I have a son Sean who is a senior at Boston University, and a daughter Gabrielle who is a junior at Yale. I was just in a show at the Grimaldis Gallery in Baltimore, and will have a one-person show there in spring, 1983. My work can be seen at the Gross McCleaf Gallery in Philadelphia. My studio is in a factory building [nearby]."

'57

Stephanie Brown Carleton wrote that she is "pursuing water color, working with loose images of domestic [scenes] such as laundry and china, crystal, closetsful of clothes." Watercolors by Stephanie were exhibited August 20-September 30 at the Louise Jones Brown Gallery, Bryan Center, Duke University. Stephanie lives in Chapel Hill, North Carolina.

"Dear Bennington:

"*Quadrille* continues to delight me! I am so thrilled to read of the continuing achievements of the women and the men who have had the 'Bennington experience.'

"Fate moves in strange ways. My son Eric graduated from Johns Hopkins in May with general and departmental honors, and Phi Beta Kappa! Dean Michael Hooker presented Eric his diploma. So Bennington is a part of my son, as Johns Hopkins will be a part of Bennington.

"Twenty-six years later, the Bennington experience is a vital part of my life. At the risk of sounding like a 'snob,' we are special people. We support the arts, we read, we create, we debate, we are active in our cities.

"Here, in Miami, I often daydream of my youth in Vermont. I survive tropical summer with wistful memories of the crackle of fallen October leaves, the crunch of new snow on Commons lawn and the special smell of spring.

"If I am unique, it is largely due to my unique Bennington education! Fondly, **Roberta Selwyn Miller.**"

Early this summer **Lynn Sakowitz Wyatt** was interviewed by United Press International and was the subject of a press release about the social activities of the Wyatts.

'58

Joan Shapiro Johnson and her husband Charles moved from Marblehead, Massachusetts, to North Haven, Connecticut, six years ago. They are the publishers of *TV Facts Magazine*, a local weekly TV guide and shopper. Joan wrote that their son Chuck, after a stint in the U.S. Merchant Marine, spent a year offshore lobstering and for the last three years has been working for a shipping company in New Orleans. Their daughter Sarah is a senior at Central Connecticut State College, majoring in computer science.

Anne Fulton Magai: "I love *Quadrille*! I spent two days on campus in June — cried at graduation — came away with very positive feelings." Anne's daughter Molly is a current student.

Bunny (Margaret) Beckwith Parsons

has written a study of the Biblical Job, in verse. In doing so, she reports, "I seemed to reach the suffering of the world. It was an experience." Bunny's home is Litchfield, Connecticut.

Rowi (Rosamund) Tudor van der Linde, her husband Rein (Science faculty), and her family of pianists were featured in the June issue of *Seventeen*. The five children — Polly, 22, Tasha, 21, Amy, 19, Erica, 17, and Christiaan, 12 — have been teaching piano at the Summer Sonatina for many years. Students practice for at least three hours a day, but also have time to swim, play tennis and go bike riding, as well as give a concert once a week. "It's easier to practice," Tasha told *Seventeen*, "when you know everyone else is doing it, too." Having thirty live-in pupils for the summer, she said, feels "like one big family."

The Summer, 1982, edition of *Vermont Life* reviewed various music camps in Vermont, including Summer Sonatina: "Summer Sonatina in Old Bennington is aptly termed 'The Giant Music Box' because this spacious house of 35 rooms has 20 pianos inside ... Says one concert-goer: 'Expect everything from one-finger melodies to very polished renditions of Mozart.'"

Music continues year-round in the van der Linde home. There is a pre-piano course for the very young, ages 3 and 4, which starts in September. Programs for adults are held in autumn and winter. A 12-week piano course is offered during the school year through Southern Vermont College. Rein peppers his teaching schedule with occasional concerts, sometimes solo and sometimes complemented by other musicians.

'59

Harriet Turteltaub Abrams teaches full time at the Crefeld School, Chestnut Hill, Pennsylvania — photography, and silkscreen on fabric. "When time is available beyond this I work in my studio at home." Harriet lives in Ardmore.

Deirdre Cooney Bonifaz's Ethiopian-born daughter Margarita has begun her second year at Bennington. The Artisans Cooperative founded and developed by Deirdre will celebrate its tenth year in 1983. "Providing a lifeline to very rural artisans in America, this unique experiment insures the artisans a voice in the marketplace and in the five artisans craft stores and galleries on the East Coast. Members live in remote, job-starved areas of this nation, the majority subsisting on fixed incomes of \$3,500 annually." Deirdre, her husband Cristobal and their family live in Chadds Ford, Pennsylvania.

A four-page pictorial feature article on **Pam Hill** in a recent issue of *People* magazine traced her origins from the daughter of a Buick dealer in Muncie, Indiana, through her years at Bennington to her status now as "ABC's first lady of documentaries." Photos show her trout fishing in Vermont, with her boss Roone Arledge, with Richard Nixon and David Brinkley, tackling rapids in a canoe with son Chris, and with her husband, Tom Wicker of the New York Times.

"... Pam went to Bennington with her heart set on becoming a painter," said the article by Kristin McMurran. But later, when she saw an NBC White Paper called "The Decision to Drop the Bomb," about Hiroshima, "I knew what I wanted ... It was instantaneous."

Ellen Lapidus wrote that she has received dual nationality. Ellen is living at Ramon Crater and her address is 210/13 Mitzpe Ramon, Ha Negev, Israel. Daughter Celia Sanchez finished her junior year at Haifa University and is at Brooklyn College living with Ellen's parents. Daughter Raquel Sanchez also attends Brooklyn College. Ellen's third daughter, Allison Beth Stern, is entering first grade in Mitzpe Ramon. Ellen is still an artist.

Lydia Soifer was pictured in action testing a youngster's language abilities in an August 16 *New York* magazine article about "Learning Disabilities — How to help your child." Lydia is working at the Einstein Center for children's evaluation and rehabilitation in New York.

'60

Beth (Elizabeth) Lewy Bland is mayor of Mercer Island, Washington. "Am currently running for the new eighth district congressional seat in the State of Washington. Have no primary opposition (Democrat). The Republican opponents are all anti-choice. Things look good!"

'61

The paperback edition of *The Flowers of the Forest* by **Ruth Doan MacDougall** has recently been published, and her eighth novel, *A Lovely Time Was Had By All*, is scheduled for publication this fall. *Flowers of the Forest*, set in the White Mountains and lakes region of New Hampshire, is about poor Scottish immigrants in America at the turn of the century. "The story," wrote *Publishers Weekly*, "and these characters are so vibrant and fascinating, the prose is so beautiful and eloquent, that there is a real sadness when the novel ends." Ruth's new novel will be published by Atheneum. Her earlier novels include *The Cheerleader*, *Wife and Mothers* and *Aunt Pleasantine*. A native of Laconia, she lives in Center Sandwich, New Hampshire.

'63

Betty Aberlin continues "happily" in her fifteenth year as Lady Aberlin on *Mister Rogers' Neighborhood* (PBS). Having taped the eighth children's opera, *Spoon Mountain*, she wonders "whether alumna working with children would be interested in adapting any of these TV works for theater or concert use." Betty has "finally accepted the fact that Bennington is co-ed," and has "found grace and inspiration at Riverside Church and its disarmament program."

Barbara Goldberg Rohdie finished restoring their 150-year-old house this spring. She has received a certificate in administration and supervision, and is teaching educational psychology and psychology of the gifted at Montclair State College. Barbara also teaches a course in creative thinking at the Gifted and Talented Middle School in Montclair, and is president of the high school PTA. "Still dancing and playing tennis."

Diana Strauch Scott wrote in July that she had run into **Liuda Dovydenas '65** recently at a special event in Worcester, Massachusetts. "Somehow, the 19 years since we last saw each other in Bennington's Kilpatrick House did not prevent recognition. Thank goodness. That means we haven't changed *too* much over the years."

'64

Maryanne Conheim works for the *Philadelphia Inquirer* covering cultural news, a job which she has held for a number of years. Maryanne lives in Philadelphia.

Artist-naturalist **Judy Isacoff** exhibited her paintings at Park-McCullough House, North Bennington, June 6-18. Judy is director of environmental education at Goddard-Riverside Community Center, New York. An artist-in-residence grant from the Artists for the Environment Foundation in New Jersey enabled her to paint for four months in the Delaware Water Gap National Recreation Area. Judy translates the subtle rhythms of nature into intense sweeps of color, bright and brimming with the surety of one who



Three contrasting views of Liz Lerman '69 (see accompanying Class Note). In the group photo she appears in the back row, second from left. The performance photo is from "Ms. Galaxy and Her Three Raps with God." (Photos by Dennis Deloria, Herb Migdoll and Dance Exchange, Washington, D.C.)



moves to those same rhythms. The result is a generous outpouring from her palette, which calls to those who have never experienced the quiet perfection of winter buds or the effusive chorale of a mating woodcock (Bennington Banner, June 9). "I see myself as adventuring in natural landscapes and then rendering focused incidents from those adventures." Also a poet, Judy wrote of her years as a recluse in northern Vermont:

*I saw society set apart
from
amplitude of the seed world; where
sprays of waxwings melt into the
twigging of branches, and the hallucina-
tory clamor of spring peepers rises
beyond hearing.*

'65

Jill (Elizabeth) Underwood Bertrand moved to Weston, Massachusetts, in August, where Stepping Stone Stable — training, breeding and showing Morgan horses for dressage and showing — will come into being. Jill's husband Gordon is with Shepley, Bullfinch, Richardson and Abbott, architects, in Boston as well as doing some work on his own.

A note from **Lisa Gallatin Gerard**, who was a full-time student this spring at the International Center of Photography: "I am a freelance photographer, living in and enjoying New York City with Bob and our children, Celia, 8½ years, Robbie, 7, and William, 5. This fall I am in the Master of Arts program in photography, a new joint venture of

New York University and the International Center of Photography."

Susan St. John-Rheault wrote from Owl's Head, Maine: "The components of my life are:

"Nicholas St. John Rheault, age 6, and Anne St. John Rheault, age 4, adopted in Taiwan, where we spent a month, November, 1981.

"The practice of architecture in mid-coast Maine.

"The teaching of leadership and stress management courses at the Hurricane Island Outward Bound School where Bob is program director.

"Work with the Maine Nuclear Referendum Committee.

"The integration of these elements is the context of life right now and writing on the elements gives me a continual

expression of that context, which is sometimes missed in the moment, as I experience stress designing an addition for the children using only nuclear-free power!"

'66

Sally Brenner Hammerman has put her sewing-art skills to utilitarian use and is now a designer. She and her husband Jim, her young son Joey and her teen-age son Aaron Cooley "are expecting twin girls in August." Sally and her family live in Philadelphia.

'67

After six years as director of advertising and promotion, **Pamela C. Acheson** was promoted last fall to director of marketing for the textbook division of Harcourt, Brace, Jovanovich. "I travel almost weekly all over the United States and see **Debbie Clements Gessner '67** and her daughter Jennifer at least once a month in Chicago." Pamela lives in Manhattan.

Paintings and work on paper by **Danielle DeMers** were on view at the Red Piano Art Gallery, Hilton Head Island, South Carolina, August 1-31. Danielle was on Hilton Head until September and then returned to New York City.

R. Sue (Roberta Sue Mull) Johnson: '21 am a single parent raising two young people, Kathryn, 16, and David, 15. Between parenting and my duties as office and personal business manager for a neurosurgeon whose interests are extremely varied I am kept perpetually active. *Quadrille* is an oasis for me in a desert filled with investment portfolios and financial statements." Sue lives in Salem, Oregon.

This year's July concert of the Mostly Modern chamber orchestra conducted by **Laurie Kohn Steele** performed works of neglected twentieth-century composers at the free annual Stern Grove Midsummer Music Festival in San Francisco. She likes to perform composers like H.K. Gruber, Henry Brant, Percy Grainger, Dane Rudhyar, William Bolcom and Ernst Bacon, among others. In a preview of the program for the July issue of *Focus*, Laurie told Allen Ulrich that if she confesses one goal, it is "to expose the older generation to composers whose works are frequently passed over for being unfashionable ... I don't want to be a sentimental sap. But I truly believe that a modern music concert, like any other, should touch a listener. It should open up doors. It's not just a question of entertainment. It's part of a philosophy. A composer must ask, 'Who am I writing for? Where does the audience fit in all this?'"

She pointed out that the name is *Mostly Modern*; therefore each concert is salted with something from an earlier century. In July she planned to use either Weill's *Three-penny Opera* suite or Dvorak's *Serenade for Winds*.

Laurie's greatest coup so far came last February when she presided over the West Coast premiere of *Frankenstein!!* by the Austrian avant-gardist H.K. Gruber. "A nervy, edgy, blackly humorous musical setting," wrote Ulrich, "of poems by H.C. Artmann, the cycle cut right through prevailing academic notions of what music should be. And Steele managed to snag the work's inimitably zany creator to serve as narrator for this sly 'vaudeville.'"

Laurie also leads the San Francisco Recreation and Park Symphony and guests with the Bay Area Women's Philharmonic.

'68

Viking Press published **Laura Furman's** second book, first novel, *The Shadow Line*, late this summer. This novel, according to the Viking press release,

fulfills the promise of her first book, a collection of five stories and a novella, "and reaches out to a more complex and elusive subject ... Furman has created a multilayered, finely textured novel."

Peggy Kohn Glass wrote condolences on the death of former librarian Polly Hopkins and added personal information: The Glass family is growing by leaps and bounds. Adam is 10, Rebecca 6 and sweet, chubby, fair-haired Noah 16 months. The older two adore their little brother and treat him like a pet, especially since our dog Barley died this summer ... We are putting a huge addition on the house this fall — an office for Len, master bed/bath and a renovated kitchen for me. I'm going to be in the February issue of *Bon Appetit* magazine. Very exciting!

The Glasses live in Auburndale, Massachusetts.

Ted Kirby (Dr. Ernest T. Kirby) is professor of theater at the University of Maryland, Baltimore County. In December, 1981, he presented a paper on the masks of South America at a round table on the mask in Paris.

Word has reached us that **Lydia Allen Kitfield** is living in North Edgecomb, Maine, with two children, a horse and several goats.

Pat Woodbridge writes that she lives with three women artists in a large, upper West Side apartment in New York City. "I am still freelance set designing. Among the shows I did this year were *How I Got That Story* at the Chelsea Westside Theatre, *The Contest* and *Of Mice and Men* at the Philadelphia Drama Guild. I just [July] finished drafting the musical *Cats* which is coming over from England this fall. I begin my fifth year teaching first-year design and theatrical drafting at New York University. Last fall my theatrical renderings were in an exhibit on stage design at the Touchstone Gallery in New York.

"P.S. Would be glad to advise potential set, costume or lighting design students on NRT jobs or graduate plans in the theatre."

'69

Laurie Eliscu (Calahan) has formed the Hudson River Repertory Company operating out of her house at 666 North Broadway, Hastings-on-Hudson, New York 10706, and in various locations in New York City. She is teaching acting to adults and older children, as well as directing and performing.

Laurie and Pat Calahan have three daughters: Lili, age 13, Kathy, 11, and Christie, 6.

Sherry Stodola Clarke is "currently single" and living in Sacramento. Sherry works as a medical records consultant for the California Department of Mental Health, "travelling much around the state in that capacity."

An exhibition of paintings and pastels by **Virginia Creighton** was on view at the Guggenheim Pavilion of the Institute on Man and Science in Rensselaerville, New York, August 9 through October 8.

Susan Blanck Franzen received her Ph.D. in 1978 from the department of behavioral sciences of the University of Chicago. In 1981 she graduated from the Chicago Institute for Psychoanalysis. Susan has her own private practice and teaches clinical psychology in Portland, Oregon, where she lives with her husband Bob and son Peter.

Deborah Shapiro Krasner divides her time between New York City, where her husband Michael is an associate professor of political science at Queens College, and Putney, Vermont, and between practicing therapy and painting.

"Please print the news of the birth of my daughter Abigail on October 28, 1981."

One of **Liz Lerman's** dance companies, Dancers of the Third Age, was spotlighted in June-July, 1982, *Modern Maturity*. This Third Age group evolved out of dance workshops Liz held for older people in Washington, D.C. The modern dance troupe pictured performs in the area and its members also appear with the Dance Exchange Performance Company. Liz believes anyone can get pleasure out of dancing regardless of age or physical condition. "When you see an older person dance you realize immediately that dancing is for everyone." Seeing an older person dance, she says, is "more convincing than any words that the world of the arts doesn't have to be so narrow."

Liz had a week's residency in the Hornell, New York, area May 10-15, presenting informal programs for area schools, organizations, service clubs and other groups. Her residency was part of the Affiliated Artist Inc. program and was sponsored locally by the Hornell Area Arts Council. Liz concluded the residency with a public concert in Hornell on May 15.

'72

A son, Charles Ross Koster, was born to **Gloria Bussel Koster** on April 28. Her daughter Megan is two years old "and so our household is very happy but never quiet." Gloria and Eric live in Pound Ridge, New York.

Karen Sorg Schlenker, her husband John and "kids" Kate, 7, and Noah, 4, continue to collect animals, "now including chickens, pigs, cats and dogs. I'm also editing the children's page of the Mille Lacs County Times." Karen's collecting and editing takes place in Milaca, Minnesota.

'73

Karin Marilyn Adir and Michael Joseph Hume were married July 10 on Fire Island, New York. Karin is a mime and an actress using the professional name of Karen Adir. Michael is a tenor in opera, recital and musical theater in Washington, D.C.

Jenna (Jennifer) Bisgyer completed two years of study in Chinese medicine this spring at the New England School of Acupuncture, as well as training in body-centered psychotherapies. She began a practice in acupuncture, counseling and body-centered therapies in Cambridge, Massachusetts, this summer.

Victoria Ann Conn completed three years of residency in pathology this summer and moved in August to Tucson to start a residency in psychiatry. "I started playing the cello a year and a half ago. Since the 1984 cello congress will be held in Arizona, I hope to see some fellow Bennington classmates there. (I know that's a long time from now, but it is a goal for me.)"

Julia Copeland is living in Los Angeles, where she has been playing for nearly three years as a full-time extra with the Los Angeles Philharmonic. "I have not yet decided to make a career of music, though."

Cathy deMoll is back in the twin cities with her husband and two sons. "Am just beginning a job as director of promotion and public relations at Minnesota Public Radio, and am a member of Minnesota Composers Forum and Choralis Sine Nomine. Have enjoyed a wonderful year and a half home with the kids. Now it's Dad's turn." Home is St. Paul.

Twig C. George and David M. Pittenger

were married June 19 in Chappaqua, New York. Twig, who has a master's degree from the Bank Street College of Education, is educational coordinator for the Center for Environmental Education in Washington, D.C. David is a graduate of Cornell University, with a master's in environmental education from the University of Pennsylvania. He is curator of education for the National Aquarium in Baltimore.

This summer **Alexandra Hughes** sang with the Santa Fe Opera Company "in my second apprenticeship. I frequently see **Jane Plimpton '73** (my roommate at Bennington in '71), and just bumped into **Deborah Borda '70** in the company parking lot, as she was visiting Edo de Waart of the San Francisco Symphony. He is conducting *The Marriage of Figaro* here, in which I'm covering the role of Cherubina. Small world!... Last winter I sang Hansel of *Hansel and Gretel* at the Tennessee Williams Fine Arts Center at Key West, Florida, where I ran into **Ninette Pierce**, class of '73, running her cute little shop 'Deco West.'" [*Quadrille* is having trouble identifying Ninette. Help!]

Melissa Page Marshall is an attorney in the solicitor's office of the Department of Labor. She is litigating black lung disease cases from the administrative hearing level up through the U.S. Circuit Courts of Appeal. Melissa lives in Arlington, Virginia.

The latest sound sculpture by **Liz Phillips** was available to thousands of MayFest frolickers May 20-23 in Tulsa, Oklahoma's Johnson Atelier. *Come About* is the second in a series of wind-activated sound sculptures (*Windspun* was the first) designed by Liz, and remained in place for a month. It consisted of an outdoor structure made of brass pipe, simple in design, electronically wired to react to changing wind speed and direction — as well as to the surrounding crowd — to create unique environments.

Betsy Robinson wrote that she is still writing and acting. "This summer my play *Inventory* was produced at Theater In the Works in Amherst, Massachusetts, and *The Conquest*, a teleplay, was done at the Eugene O'Neill Playwrights Conference. Also, my work as an actress can be seen in John Sayles' soon-to-be-released movie *Lianna*." Betsy lives in Manhattan.

Robert Stark: "The Kansas City Philharmonic has become insolvent. Currently, I'm involved in the process of building a new symphony from the ground up and am very open to ideas. The initial goal is to raise a \$10 million arts endowment fund to which my illustrious and generous boss, R. Crosby Kemper (chairman, United Missouri Bank), has committed \$3 million. An additional \$1 million was also committed by him to operate an interim orchestra for one year. My office address: United Missouri Bank of Kansas City, N.A./Box 226/Kansas City, Missouri 64141.

"Last year I was admitted to the Missouri bar; previously I had been admitted to the Washington State and the Washington, D.C., bars. In April of this year I was elected an officer of United Missouri Bank."

'74

Hardy Kornfeld and **Diane Welebit '76** were married last February. Hardy has received his M.D. and is a doctor at University Hospital, Boston. His article on A.I.D. Syndrome was published in the September edition of the *New England Journal of Medicine*. Diane is travel editor for *House & Garden* magazine. Diane and Hardy live in Cambridge.



Jan Cherubin '77, who was named "Mini Mag Editor" of *Seventeen* magazine.

Midnights. A Year With the Wellfleet Police was published by Random House late this spring. This first book by Alec Wilkinson is about the year he spent, following graduation from Bennington, working as a policeman for that small town's police department. Book reviews have reached *Quadrille* from the *New York Times*, July 16, and *Time*, July 26.

"*Midnights*," said Paul Gray of *Time*, "is both a comedy of errors and an affectionate portrait of small-town police, those beleaguered souls charged with the task of keeping their neighbors in line ... The tedious side of police work rarely figures in TV serials or best-selling novels. *Midnights* offers a healthy antidote to all those shoot-'em-ups, a reminder that those assigned to protect are often vulnerable and quietly heroic."

"The special appeal of *Midnights* is that it's about the Cape Cod town of Wellfleet," wrote Christopher Lehmann-Haupt of the *New York Times*, "a place I thought I knew until I had read Mr. Wilkinson's charming report ... having spent a couple of summer vacations there might have given me a special appreciation of Mr. Wilkinson's scene. But it seems to me that with a few well-chosen strokes he has put all readers into the picture ... What a special surprise ... to discover the town's nine-man police squad with its coppers and gun toters, its divisions over the question of plea bargaining and its many problems not at all dissimilar to those of a big-city force. How incongruous that Wellfleet once had a bank robbery, though not in recent memory a murder; or that its police are advised to take care while searching the interiors of automobiles not to puncture their hands with contaminated hypodermic needles discarded by drug addicts ... The greatest appeal ... is not so much the gossip as the funny portrait it draws of a young man, fresh out of college with a degree in music, of all subjects, trying to get the hang of police duties most of us would take for granted ... it reminds us ... [that] we ought to have known from the beginning that the real life of Wellfleet,

Massachusetts, is just another symptom of contemporary civilization's strains and not at all the sum of its white powdery dunes, its brisk cerulean seas, its freshwater ponds or its creaking piny woods, however much we may have wished and fantasized it to be."

Alec is a reporter for the *New Yorker* and he lives in Manhattan.

'75

Betsy (Elizabeth) Galt: "After a year at Bear, Stearns and Company (where I met my husband) in the retail area I am now part of the Leuthold group, a financial forecasting service, headed by Steven Leuthold and associated with the brokerage firm of Lynch, Jones and Ryan in New York. We provide portfolio strategy to institutions in return for brokerage commission dollars."

"How did I go from photography to Wall Street? It's a long story. But I enjoy my work tremendously, and have found a happy personal alliance. I find living in the suburbs a bit strange, but my husband has two children by his first marriage and partly we live out here to be close to them. However, I am adjusting well. I can't bring myself to wear lime green but I did break down and buy an Izod shirt. My tennis game still hasn't improved. Greenwich is adjusting well, too, to a married couple with two different last names."

Bellanne Meltzer Toren graduated from Guilford College with honors and was listed in *Who's Who Among Students in American Universities and Colleges*. She has received a major scholarship to attend Duke University Law School. Bellanne was a painting major at Bennington College and her work has been exhibited. She had a six-year residence in Israeli kibbutzes, serving in several capacities, and was resident professional artist at Kibbutz Gevulot. On her return to the United States she enrolled in Guilford. Bellanne and her husband Hanoch live in Greensboro, North Carolina.

'76

"Please put this in your next class notes:

"On June 3 Dor Ben-Amotz officially declared his candidacy for 'Benevolent Tyrant Leader of the Free World,' to succeed no one on behalf of all people who eat three square meals a day. As an atheist, I understand everybody's problem and plan to push actively for a workable solution. In order to win, you have to fight, and the more you fight, the better you feel, so let's have beans for every meal! Thank you, Dor Ben-Amotz, 2328 Parker Street, Berkeley, California 94704."

Boston Rock #30 writes that street player Jane Glick Byaella is "An incomparable classical guitarist and composer who plays all over Boston and Cambridge. [She] plays some of the most beautiful music to be found anywhere. Not to be passed by."

After part-time stints at the Museum of American Folk Art, New York City, the Field Museum and the Museum of Contemporary Art, both of Chicago, Nancy Halverson Melvin is a membership assistant at the Museum of Contemporary Art and teaching contact improvisation at the school of the Art Institute of Chicago as "T.A." Nancy is still working on postgraduate work in art history and aesthetics there, with special interests in women's art, textile and folk art, and ethnographic art. Nancy's husband, Thomas Melvin '75, is a muralist.

Suzanne Temple is music therapist at the Longmont Tiny Tim Center, Colorado, a school for developmentally disabled toddlers and pre-schoolers. She works with the school's 30 students, using music as a tool for "learning cognitive and pre-academic skills and to help develop gross and fine motor skills, coordination and social skills." She works closely with the other team members at the center — an occupational therapist, speech and language pathologist, special education teacher and two aides. She learns the special needs and problems of each child and develops activities, both on a one-to-one basis and in groups, to work on those problems. Music therapy enhances a child's learning in many areas. Group singing teaches participation, social skills, attention span and following directions. Auditory and memory skills, speech development and muscle control are also aided, motor coordination is learned (moving with a beat in marching songs, e.g.); gesture imitation, rhythm movements etc. all improve motor coordination. Sue continues to work with Parks and Recreation and serves as a supervisor and advisor in the music therapy program at Colorado State University.

Joe Slomka '76 and Claudia White '78 were married on August 19, 1979, "and have been living happily ever after in Schenectady, New York. Joe is writing editorials for the *Schenectady Gazette*, while Claudia manages a local bookstore."

'77

Jan Cherubin was appointed "Mini Mag Editor" of *Seventeen* magazine in July. Mini Mag is a nine-page section made up of short articles on topics of interest to teens. Jan will oversee all articles appearing in Mini Mag, write and edit stories, select and purchase free-lance articles, and work with *Seventeen's* art department in choosing the visuals for Mini Mag. Jan lives in New York City with her writer husband, Roger Director. In her spare time Jan enjoys cartooning and fiction writing.

Matthew S. Zilboorg and Katherine Patricia Job of Underhill, Vermont, were married May 29. Katherine is an alcohol and drug abuse therapist at Maple Leaf Farm in Underhill, and is attending Adelphi University this fall. Matthew is a psychotherapist at Family Therapy Association in Essex Junction. They are living in Cambridge, Vermont.

'78

Barbara Barnes was a guest artist-teacher at the Summer Art Workshop for Young People July 12-23 in Waveny Park, New Canaan, Connecticut. The classes were sponsored by the New Canaan Society for the Arts. Barbara was one of several former New Canaan High School design class students who staffed the workshop.

Claude Brachfeld has completed his work at Rutgers Medical School and has started a three-year residency at Roosevelt-St. Luke's Hospital Center in New York. He is in the specialty training program in internal medicine. Claude took up running, when a broken finger temporarily eliminated the guitar and tennis while at Bennington, and has subsequently run road races and cross country. This spring he ran two marathons at the Penn Relays in Philadelphia, the second with a finishing time of 3:28.

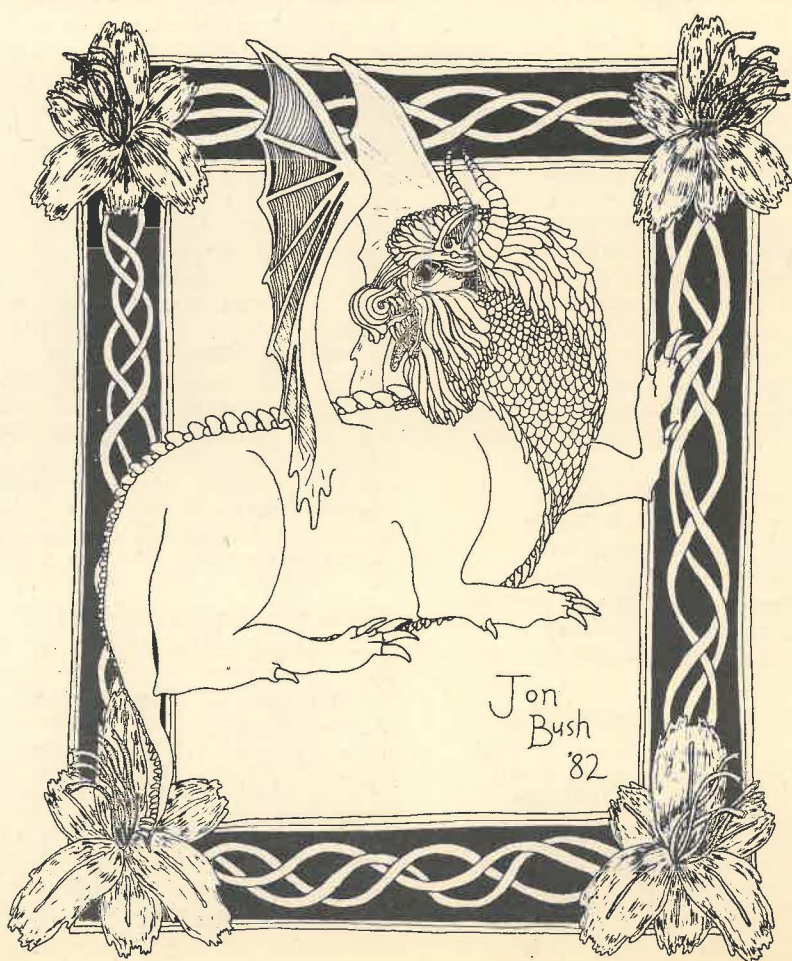
Stephen Court of Leeds, New York, resigned his position in mid-term as teacher of English 10 and 11 and two senior courses, Shakespeare and writing-speech, claiming that "the attitudes, practices and policies of the faculty and administration at Catskill High School promote and perpetuate mediocrity." Stephen followed his action with a series of three letters to the editor of the *Catskill Daily Mail*.

A first-year teacher in the school, Stephen began to have discipline problems with his students last fall because "I was making them work and think. I was not lavish with grades ... I had kids in 12th grade who couldn't write a grammatically correct sentence and worse, didn't care." He urged students to put in periods, commas, and distinguish between capital and small letters; when he finally began marking off for mistakes "the kids went in droves to complain ..." The head of the English department was supportive but the administration seconded the students' rebellion. After careful thought Stephen concluded he was not helping the students by continuing. "When a teacher goes in and rocks the boat, something's got to give. I'm hoping I can perhaps still help the kids from outside the system ... I have nothing to lose."

Derek Drew wrote that "a year after joining *Institutional Investor*, in New York, as a junior reporter, and about 500 articles later, I've been promoted variously to associate editor, senior editor and, most recently, managing editor in charge of a weekly business publication on banks." Derek lives in New York.

Letter from Meyer Goldstein came in August:

"I still feel kind of hurt and sad about Don [Brown], such a strange thing to hear so unexpectedly [a phone call to request transcripts] ... Let's see if I can catch you up ... I'm not married, haven't become a brain surgeon or punk rock musician, or independently wealthy ... I worked at a camera store in Boston for my first year after school, saved my pennies and flew the coop. I liked Oregon a lot, very beautiful, lots of outdoor activities, and landed a fun job, after six months of hard labor and odd jobs ... in an outdoor sports shop, fixing and selling bicycles, skis, back packs and lots of fun stuff ... just over two years, but tired of the rain ... frustrated with the social situation where I was living in



Two of the printed cards referred to by Jonathan Bush '79 which are being sold in stores in the Boston area.



Corvallis ... so it seemed appropriate to move on. Semi-accidentally, I stumbled into Chico [California] after visits to Montana and Yellowstone ... fell in love with the Park ... Also coincidentally immediately was offered a decent job at the bike shop in town. Fate reaches out and grabs you by the collar.

"I've been having a lot of fun riding my bicycle (and I race competitively), swimming, playing volleyball and tennis, and volunteering at a shelter for battered women. My schedule seems full now as I train about two hours a day for an upcoming Triathlon, a race where you have to run, swim and bike. I also spend about the same amount of time studying for the LSAT to be taken in October, after which I apply to law school!!... I'm really excited about the

idea and feel pretty confident about it. I've started looking at schools but haven't gotten too far yet, but I'm even enjoying studying for the test ... I really regret not being able to share my excitement with Don, I know he'd be pleased, the whole thing is so sad ... Hello to all."

Janet Deborah Ross and Robert T. Danforth were married July 25 in Smithtown, New York. Janet graduated from the University of California at Santa Cruz, and Robert graduated from Washington University in St. Louis, Missouri.

Larry Stevens is reading for the law under an attorney in Bennington, and has recently joined the staff of an area real estate firm. In addition to these

responsibilities, Larry works mornings for the maintenance department at Bennington College, and in the afternoon in the College's word-processing room.

'79

Jon (Jonathan) Bush recently wrote from Belmont, Massachusetts:

"Though I never officially graduated from Bennington, I still have many good memories of the beautiful countryside, and the good friends and teachers I found there. I am sending four of my printed cards, some of which are for sale around small stores in the Boston area, and others being published in 'little' magazines ..."

Mimsy (Margaret) Moller took a two-week color photography course at the Maine Photographic Workshop in Rockport. She had received a half scholarship for his course, and also for the workshop's Freelance Photographers' Market Conference held one weekend this summer. "Afterwards," Mimsy wrote, "it's back to work at Bookland of Bath for a little while longer." She is living in Round Pond.

'80

Quadrille apologizes to **Anne Soorikian** for ignoring the printed page and misreading her given name. "June" she is not. Nevertheless, she is still an assistant editor at *McCall's* and loving it.

Andrea Poole: Just keeping the world in touch with what has been going on in my life. June was a rather eventful month ... I finished my degree in law from Pembroke College, Oxford, and on the 26th I married Rush Welter in the garden of my parents' home in Canada. Rush will be returning to Bennington this autumn ... and commuting to New York on weekends as I will be setting up residence there. Future plans are tentative at this point but definitely include taking the bar exams ... P.S. **Roxanne Spiotto Galdol '78** was bridesmaid.

Dana Rosenfeld has moved to Chicago, where she is a graduate student in the department of sociology at the University of Chicago, "soon to be a major motion postcard." Dana lists her type of business as "anti-statist, increasingly refractory, marginally Hegelian," and comments: "Ongoing critical exegesis of academic qua intellectual texts regarding the relations of political power. Hope to undertake analysis of the imminent political implications of philosophy and their evolution into political ideologies. Ongoing battle with the forces of the new fascism, riding the coattails of the New (sic) Left. Have reduced sociology to a mathematical postulate, e.g. — $1 + 1 = 2$; $x \cdot 70$; $1 + 1 = 2 + x$. On to Wisconsin: Shalom."

Since the above communication, Dana has written that she received a French government student grant to study at L'Ecole des Hautes Etudes en Sciences Sociales in Paris. "I will be studying the dynamics of political ideology vis-a-vis its role in policy making, in social movements, and in artistic and literary production. Through this study I hope to gain insights into the tracing of epistemological phenomena such as perception and memory and thence to trace the development of mnemonic systems in 19th and 20th century European society. I leave in October and will return in July. If any Bennington student will be in Paris and wants to look me up, they can get my Paris address from the University of Chicago's Department of Sociology."

Rodi Rovner is continuing her studies in the arts with a graduate assistantship in glass with Joel Phillip Myers at Illinois State University in Normal, "and enjoying life in the great Midwest." Rodi lives in Bloomington.

From **Susan Chase Scher**: "I'd like to share my recent accomplishments. Doesn't *Quadrille* have a column for us over-achievers to brag about our hard-earned achievements? I'm just ecstatic about how my life has taken a turn for the better — I want to spread the news."

"Yesterday I received a scholarship at the Dance Place here in Washington, D.C., to dance in exchange for work and participation in concerts. I will, however, be going for my master's at George Washington University in French literature, having received a graduate teaching fellowship. I can't think of a more perfect combination for myself; and being forever broke, I'm pleased to know you can do what you want here in the States without a penny."

"All my love to Bennington for allowing me to pursue these two interests with equal passion."

Robert Macht returned early this spring from an eight-month trip to Java, Indonesia, where he did a study comparing the percussion instruments used to perform their music, Gamelon, with his own constructions of those instruments. He plans to open a school in the Baltimore, Maryland, area to teach children to play these instruments. A premiere performance of Robert's *Humming Panda* was performed in Baltimore on April 25 by Res Musica Baltimore Inc.

Bill (William) Leacock is deep in rural Thailand, 40 miles from the nearest Westerner and near Ban Bong, a hamlet close to the Laotian border. He is one of about 150 Peace Corps volunteers in Thailand working on projects as varied as malaria control, English instruction and agriculture. Bill is trying to help farmers who were displaced by the construction of a large dam. He has spent more than half a year in the resettlement area, and his first project, a nursery to provide fruit trees for the farmers, is only beginning. Bill's first months were spent in getting to know the people, learn their problems and earn their trust. "You've got to plant an idea with them and then step away and let them talk about it. Then, if they want to do it, it's their project, not your project."

'81

Kris Heaton, Billy Farrell '82 and **Ray Foote '82** were home in July with their rock band, "Control Group," to appear at the County House in Banksville, Connecticut, and at the Agora Ballrooms in New Haven and Hartford. Since last winter Kris, Billy and Ray have acquired a new female lead vocalist, two CMC agents, and a personal agent. They also have a road crew consisting of a sound engineer, a light man and a stage technician.

Jonathan Schulman has entered his second year of graduate study in mathematics at Brandeis University, and is completely responsible for the teaching of one undergraduate class this semester. "This will give me the opportunity to employ everything I learned about teaching mathematics from Rein and Lee J. All my best also to Jack and Lou." Jonathan is living in Waltham, Massachusetts.

'84

Some sage advice on "how to choose the right college" written by **Jeff Merron**, a current student (expecting to be a December '83 graduate) appeared in an "education and careers" supplement of the Princeton Packet and other newspapers during August. Photographs of a Bennington drama workshop and of a Gunnar Schonbeck quartet appeared with the issue. Jeff was identified as a former Packet sports editor and student at Bennington.

Continued from back page

God's Grace, Bernard Malamud's book which was published by Farrar, Straus & Giroux this summer, has received extraordinary attention from reviewers. As John Leonard put it in the daily New York Times review, "Well, man nuked himself, and God was annoyed." Said God, "They tore apart my ozone, carbonized my oxygen, acidified my refreshing rain." And God sent down a Second Flood to drown all the leftovers except Calvin Cohn ... who was washed up on a tropical island.

"Our history, according to Mr. Malamud," wrote Leonard, "will not permit happiness ... God invents himself; the rest of us make up history. Mr. Malamud is plus something else."

Asked novelist Alan Leichuk on the front page of the Sunday New York Times Book Review: "How often is it that a major contemporary novelist opens his latest book with a dialogue between God and man? Or employs for his main characters one human being and a chimp, with an assortment of gorillas and baboons for other dramatis personae? Or seeks to conceive a fable for the future — man after the nuclear "Devastation" — that is nothing less than a retelling of the Old and New Testaments, complete with the author's views of man's (and God's) nature, good and evil, cause and effect, fall from grace?"

God's Grace, said Lechuk, is "the most up-front fable" Malamud has yet written, "complete with a defensive Yahweh, an ironic Moses, Jesus, talking

chimps and perverse gorillas, biblical rites of sacrifice, plus, of course, the pointed moral wisdom — this time full of dark prophecy."

"For the Malamud fan," he concluded, "there is enough pleasure here to entice and reward — in the comic parody, the richness of oxymoronic circumstance, the closely observed dramas of self-discovery, the Jewish irony and Yiddish flavor ..."

In a later column in the Times Book Review, Edwin McDowell's "About Books and Authors," it is pointed out that Malamud's dialogues between God and man have been hailed for their literary inventiveness. It is further observed that the author, a member of Bennington's Literature & Languages Division for more than twenty years, has also invented a new kind of punctuation: whenever God speaks, His words appear within quadruple rather than double quotes. Malamud explained that the device is his own invention, a case of "the author enjoying his craft."

The Bennington College community was introduced to readings from *God's Grace* by the author himself when he was the 1981 speaker at Commencement.

Kenneth Burke's one novel, *Towards a Better Life*, was published in 1935, reprinted in hardback by the University of California Press in 1966, and just

recently put out as a trade paperback. California also intends to reissue Burke's *Attitudes Toward History* and *Permanence and Change* next spring. Each will be a third edition, and each will have a new afterword by the 86-year-old author.

An address to the New Jersey Association of School Administrators by former President **Edward J. Bloustein**, president of Rutgers University, was later the subject of a laudatory column by Albert Shanker, president of the United Federation of Teachers. Wrote Shanker:

"Bloustein's speech raises some important points for all of us. How many of those who demand more from public schools — more discipline, more hard courses, more high standards, more insistence on traditional values — are willing to take a hard look at how they deal with their own children? If these things are important, and they clearly are, can the public schools accomplish them even without the broad changes in society that would help? And if the schools don't lead the way, who will?"

Arnold Sundgaard (Drama 1949-1954) was commissioned by the United Brotherhood of Carpenters to write a play for its 34th annual convention and in celebration of the union's centennial year. The 85-minute "living newspaper" stage production, entitled *Knock on Wood*, ran all week during the Chicago convention, and was videotaped live for tape and film presentation throughout North America by local unions and district councils. *Carpenter* magazine, March 1982, featured the

production on its cover and with a brief illustrated article.

An exhibit of the color photography of **George Holt** (Art, 1941-68) was held from September 18 to October 8 in the gallery of Southern Vermont College in Bennington. Although he has a background as a painter and designer, Holt has devoted more and more time lately to color photography, notable new combinations of color, texture and light which resemble abstract impressions but which, on closer inspection, are everyday objects. Holt and his wife Jean, who worked for many years at Bennington, operate the Walloomsac Tree Farm in nearby Walloomsac, New York.

Richard Haas — *An Architecture of Illusion* was published in 1981 by Rizzoli International Publications. The 160-page volume contains many illustrations, several in color.

A week-long celebration titled Fifty Years of Dance in Higher Education was held this spring at New York University's Washington Square campus. Festivities culminated in a banquet to honor **Martha Hill**, who received an NYU Presidential Citation. Wrote Anna Kisselgoff in the New York Times, "New York University, Bennington, Connecticut College and Juilliard. If Martha Hill's name is associated with these educational institutions it is not simply because they invited her to work there — as it would be in the case of other educators. It is that they owe their reputations insofar as dance activity is concerned to the very programs she established."

Many good NRT jobs for Bennington students in Boston, New York City, Washington and Los Angeles go unfilled because of the lack of free or inexpensive housing. If you have information about apartment sublets, boarding houses, rooming houses, house-sitting situations, or live-in arrangements, please take a few

moments to help Bennington students during their Non-Resident Terms and fill in this form and return it to:

**Alice T. Miller, Director
Office of Student Affairs
Bennington College
Bennington, Vermont 05201**

Type of housing

Address

city

state

zip

Owner or contact person

Phone

Please describe any special conditions or arrangements

crossett column

Library receives scholarly legacies

By Toni Petersen
Librarian

The book collections of two men close to Bennington College are packed in cartons and heaped together in the special collection room at the Crossett Library, waiting to be processed. There is a sadness on our part in going through these books, once part of these men's working milieu. But the families of Donald R. Brown and Lewis Cowan Merrill have donated them to the library with the forward-looking expectation that generations of Bennington students will profit from the careful choices of their former owners.

Donald R. Brown, Dean of the Faculty at Bennington when he died in March, 1982, at the age of 51, was a political philosopher who collected the great tools of his craft all his working life and whose first interest was in sharing what he knew in dialogue with his students and colleagues. His almost lifelong residence in rural Vermont did not impair his drive to know about and transmit what was going on in the outside world.

Lewis Cowan Merrill was the father of Lucy Merrill, Class of 1981. His consuming interest in history and world politics was matched by his interest in the wide dissemination of ideas and information. Born in Toronto, Mr. Merrill attended the University of Toronto and came to the United States in 1919. He worked as a credit and investment analyst, then entered the labor movement, where he served for ten years as international president of the United Office and Professional Workers Union, resigning in 1949.

focused on widening the distribution pattern of the publishing industry, initiating the first contract to place magazines and paperback books in supermarkets and drugstores. Later he was consultant to publishing and industrial concerns.

The 2,000 volumes comprising these two collections will deepen the library's resources in economics, political theory, history and the philosophy of science. An interesting benchmark is to note that the library is able to purchase about 3,000 volumes a year, so these additions in the form of gifts are truly an enormous benefit.

We continue to receive contributions of books on the lists of "long lost" volumes which have appeared in the last two issues of *Quadrille*. Not only have people sent us books which we are glad to receive but they have also written of their nostalgia for Bennington.

Among letters that have accompanied books were those of David B. Truman (Social Science faculty, 1939-41), who said he was sending them "... out of affection for Bennington and for the memory of Gladys Leslie (the College's first librarian)"; and Catherine Avery Grove '42, who wrote, "The library at Bennington was so important to me while I was there that I would be particularly pleased to help it in some way."

To continue the "long lost" list of books we could use if you could spare them:

Racine, Jean. *The Dramatic Works of Jean Racine* (London, 1890).

Ducasse, Isidore. *Maldoror* (New York, 1972).
Laclos, Pierre. *Les Liaisons Dangereuses* (Penguin, 1961).

Artaud, Antonin. *Antonin Artaud Anthology*.
Cocteau, Jean. *Opium: The Diary of an Addict*.
Calvino, Italo. *The Castle of Crossed Destinies*.
Neruda, Pablo. *Veinte Poemas de Amor y Una Cancion Desesperada*.

Cortazar, Julio. *Los Premios*.
Fuentes, Carlos. *The Death of Artemio Cruz*.
Knight, William. *Virgil, Epic and Anthropology*.
Otis, Brooks. *Virgil: A Study in Civilized Poetry*.
Caesar, C. Julius. *The Gallic War* (Harvard University Press ed.).

Brecht, Bertolt. *Collected Plays* (set).
Demetz, Peter, (ed.). *Brecht: A Collection of Critical Essays*.

Witt, Hubert, (ed.). *Brecht — As They Knew Him*.

Goodman, Paul. *Kafka's Prayer*.
Baudelaire, Charles. *Flowers of Evil* (London, 1962).

MacIntyre, C.F. (trans.). *One Hundred Poems from Les Fleurs du Mal*.

Verlaine, Paul. *Poems* (Chicago, 1895).
Balakian, Anna. *Surrealism*.

Dostoevskii, Fedor. *The Brothers Karamazov* (Penguin, 1958).

Nabokov, Vladimir. *Despair*.
Tolstoi, Lev. *The Kreutzer Sonata*.
Frye, Northrop. *The Modern Century*.

faculty notes

Vivian Fine submitted articles written about her in the media, local and otherwise, on request of Grove's Dictionary of Music and Musicians. The result, said Fine, is that she has "just been promoted from class D composer last year to class A."

Jeffrey Levine was guest conductor at the first session of the Summer Chamber Orchestra on July 13 in the Park-McCullough House Carriage Barn. This series, five weekly Tuesday night reading and playing sessions led by a different guest conductor, was made possible in part by the Dorothy Beinus Hagan Memorial Music Fund. The emphasis was in showing young people, particularly high school students, the art of chamber music playing. Other guest conductors were David Denhard, Louis Calabro, Randall Neale '81 and Edward Hines '81 and current graduate student.

On leave from the Social Science Division, Rush Welter went to Washington in January, 1981, to complete research on a sequel to his *The Mind of America*. While there he was awarded a fellowship by the Woodrow Wilson International Center for Scholars which enabled him to pursue, during the academic year 1981-82, "the so-called money question: debates over payment of the national debt, paper money, the gold standard, the coinage of silver, and the practices of modern banking." The result is that Welter expects to write two books on American thought between 1865 and 1896.

A series of six avant-garde dance

concerts titled *Movement - Modernism*, organized by the Downtown Branch of the Whitney Museum of American Art, ran on consecutive Thursdays during July-August. It was an attempt to refocus the critical debate about experimental dance and its relation to contemporary art. Among Benningtonians mentioned by New York Times critic Craig Bromberg in his pre-series commentary, "A Dance Series Fosters Debate," were Wendy Perron '69 (dance faculty), Lisa Kraus '75, Susan Rethorst '74 and Steve Paxton (ex-dance faculty). Bromberg concludes: "Dancers are challenging and, to a degree, transforming the traditional concerns of dance into a debate on dance's place in the social, cultural, and political world. Dance has once again become a battleground for ideas."

Alfred A. Knopf will publish *Riding to Greylock*, a volume of poems by Stephen Sandy, in 1983. He has poetry or prose in recent or forthcoming issues of *Missouri Review*, *Michigan Quarterly Review*, *New England Review*, *Bread Loaf Quarterly*, *The Paris Review*, *Poetry*, *Seneca Review*, *Virginia Quarterly Review*, *Yale Review*, *Bad Henry Review*, and *Fiction International*. His chapbook *After the Hunt*, 1982, is available from Moonsquilt Press.

Paintings by Pat Adams were exhibited at Artemisia Gallery, Chicago, in July. Adams opened the show with a slide lecture.

In September, at the Anderson Gallery, Richmond, Virginia, her

paintings on large canvases and smaller works on paper were shown.

The First International Viola d'amore Congress was held at the University of Wyoming, Laramie, June 30 and July 1 in conjunction with the Western Arts Music Festival. Featured at the Congress were some of the world's outstanding artists of the viola d'amore, among whom was Jacob Glick, who performed music by Telemann and gave a lecture-demonstration on Scordatura and accordatura in Vivaldi's music for viola d'amore. The Congress was sponsored by the Viola d'amore Society of America, of which Glick is a member. The international group of 12 performers offered solo recitals, lecture-recitals, chamber music concerts, concerts for viola d'amore and orchestra, contemporary concerts for viola d'amore, workshops, informal reading sessions for multiple violas d'amore, and discussions dealing with performance practices and problems unique to the instrument. All concerts and lectures were free and open to the public.

Thirty-one anthropologists specializing in the indigenous peoples of the Amazon basin gathered in Franklin House during the weekend of August 13 to 15 for the sixth South American Indian Conference. Eight papers on diverse topics (including Aguayuna suicide, male solidarity, gender display and patri-lineality, and an experiment in cooperatives which failed) generated considerable interest and lively discussions. Ken Kensinger again served as host

for the conference.

Brower Hatcher, envisioning a 35-foot-high sculpture, enlisted the aid of a master's student at Rensselaer Polytechnic Institute last January to work out the design on a computer and graphics terminal. Hatcher hopes to submit his sculpture to a New York State competition which is seeking an artist to create a work of art commemorating Vietnam veterans. He has in mind a stainless steel exterior column, composed of small see-through modules. The interior would also include soldiers, airplanes and other items depicting the war. The computer explores mathematically what can be done, various math combinations giving various shapes; the process replaces weeks of work producing a real model of the sculptor's idea.

Gunnar Schonbeck's original and sometimes outsize instruments are a constant story source for local and national media. This summer his nine-foot banjo has received much area attention as he has appeared here and there with the Sage City Six, a Dixieland jazz band. The nuclei of this group, Bob and Helen Woodworth, both retired, have enlisted Schonbeck, their son Ron, and others, to expand their own banjo-piano due with Dixieland.

Now mostly retired from the Science faculty, Robert Woodworth remains active and in demand as a featured guest with his time-lapse films. Among recent groups he has addressed were the Bennington Museum and the Manchester Garden Club.

Quadrille

DONOR BOOK

1981-1982

Bennington College Annual and Capital Fund Report

WITH SELECTIONS FROM

BENNINGTON COLLEGE
ART COLLECTION 1982





President Michael K. Hooker greets members of the Bennington community in the Usdan Gallery at the first in a series of receptions to introduce Bennington's new president.

Annual Fund again breaks all records

Bennington College's Annual Fund continues to surpass all expectations by setting records for yearly increases in voluntary philanthropy. The 1981-82 year, which the accompanying lists of names documents, produced a total of \$762,671 gifts to Bennington although the official goal was \$545,000.

Those who contributed to this fund were 1,731 alumni and 473 other friends of Bennington. These figures were a fine increase compared with previous years, but the total number of alumni of Bennington numbers about 6,000 so it can be seen that a great potential remains for increasing the percentage of giving.

The goal for the current year, fiscal 1982-83, is \$685,000, and it is hoped that increases can be achieved in both numbers of donors and

dollar amounts.

Remember that the Bennington Board of Trustees has set a goal of increasing the Annual fund by 15 percent a year, which will place it in the \$1 million category by 1986. These goals are achievable according to standards and expectations of many other colleges.

Giving to the 1981-82 fund, as reported here, was highlighted by members of the Associates of Bennington College — those who give \$1,000 or more. In fact, the Associates gave 75 percent of the Annual Fund; and numbers of Associates increased from 109 to 123 during this past year. The goal for this current year is to have 150 members of the Associates.

More important this year than ever before is the system of Class Agents, headed by Hudas Schwartz Liff '47. Each alumna/us of Benn-

ington will be contacted by a Class Agent on a personal level and asked to help toward fulfilling the new goals.

Photographs of the works of art accompanying this Annual and Capital Fund Report were taken in the Suzanne Lemberg Usdan Gallery in the College's Visual and Performing Arts Center, where the Bennington College Art Collection was exhibited during the summer months. Most of the works of art were donated by the artists, many were given by others, and some were received as a result of bequests. The special exhibit, which was open to the public from July 15 to September 15, was curated by E.C. Goossen, former member of the Visual Arts faculty, and by Richard Jordan, a graduate student in art. Goossen is also chairman of the Board of Trustees' Art Acquisition Committee.



"Bird at Rest," a bronze by Raymond Jacobson. 10 by 16½ by 8½.



"Tapered Forms" by Herbert Ferber. 18 by 17 by 13½.

Founding Associates

Contributors of \$5,000 or more in annual support to Bennington College.

Mrs. Edith A. Andrews (Edith Barbour '41)
Mr. and Mrs. Robert Borden (Susan Paris '69)
Mrs. William Beaty Boyd (Karen Johnson '46)
The Frank D. Brown, Jr. Charitable Trust
Mr. and Mrs. Maurice A. Deane (Barbara Ushkow '51)
and Mr. and Mrs. Joseph Ushkow (Family Membership)
Mrs. James D. Ewing (Ruth Dewing '37)

Ms. Berte Schindelheim Hirschfield '60
Lemberg Foundation, Inc. *
Mr. and Mrs. Donald H. Manley
Mrs. Albert W. Merck (Katharine Evarts '46)
Mrs. Stanley G. Mortimer (Kathleen Harriman '40)
Jerome A. and Estelle R. Newman Assistance Fund, Inc. *
Mrs. John W. Nields (Lila Franklin '37)

Mrs. George R. Rowland (Carolyn Crossett '37)
Mr. John Scheuer '81
Mrs. Albert R. Schreck (Joel Wells '54)
Mr. and Mrs. William R. Scott
Mrs. Nathaniel H. Usdan (Suzanne Lemberg '51)
Mrs. William Vanderbilt (Helen Cummings '41)
(3) Anonymous Gifts

Sponsoring Associates

Contributors of \$1,000 to \$4,999 in annual support to Bennington College

*New Associate

Mr. and Mrs. O.W. Acer (Charlotte C. Cullingham '46)
Yasmin Aga Khan '73 *
Amerada Hess Corporation *
Mr. Norman E. Auerbach *
Mrs. John D. Banker (Elizabeth Hubbard '43)
Mrs. James H. Barnett (Faith Richardson '41)*
Mr. and Mrs. Stephen Barr (P),
Miss Patricia Barr '71 (Family Membership) *
Mr. and Mrs. G.B. Beitzel (P) *
Ms. Linda Berkowitz '60
Margaret S. Broadley (P) *
Mrs. Francis H. Brooks (Pamela Richards '41)
Rev. and Mrs. C. Frederick Buechner (P) *
Helen Keeler Burke '41
Mrs. Hartley J. Chazen (Lois Shulman '56) *
Mrs. J. Negley Cooke, Jr. (Nancy Reynolds '37)
Sage and John Cowles, Jr. (P)
Susan Crile '65
Mildred Hubbard Cummings '40 *
Mrs. Edward M. deWindt (Elizabeth Bope '43)
Elizabeth Harrington Dickinson '43
Carolyn Gerber Diffenbaugh '40 *
Mrs. G. D'arcy Edmondson (Rosamond Taylor '36)
Mrs. W. T. Edmondson (Yvette Hardman '36)*
The Energy Resource Management Company
Mr. and Mrs. Myron S. Falk, Jr. (P)
Lucy Grier Feller '57 *
Mr. Ray P. Foote, Jr. (P)
Miss Helen Frankenthaler '49 *
Mr. George S. Franklin, Jr. *
Ms. Jamie Porter Gagarin '39
Mr. and Mrs. Richard Gangel (P)
Mrs. Charles Gaylord (Mary Fletcher Wardwell '36)*
Mr. and Mrs. Arnold Ginsburg (Jane Martin '56)
Mrs. Alan M. Glover (Janet Briggs '43)

Mr. and Mrs. William T. Golden
Mr. and Mrs. Leo Gottlieb (P)
Ms. Marie Maxon Hadwen '51
Mr. and Mrs. T. Edward Hambleton (Merrell Hopkins '43)
Mr. and Mrs. Lucien M. Hanks *
Mr. and Mrs. Bernard P. Harris (P) *
Mr. and Mrs. Edward H. Harte (Janet Frey '44)
Mrs. Raymond L. Heinrich (Barbara Willis '40)
Mr. and Mrs. Andrew Heiskell
Mr. and Mrs. Seymour Herskovitz (P) *
Mr. and Mrs. Harley G. Higbie, Jr. (Lorraine Nichols '53) *
Judith Rosenberg Hoffberger '54
Mrs. Susan Hedge Hossfeld '42 *
Mrs. Trumbull Huntington (Caroline Welch '39)
Mr. and Mrs. Joseph S. Iseman
Mr. and Mrs. Alexander F. Ix, Jr. (P)
Mrs. Janet Fraser Jones '39 *
Ms. Virginia Kahn (P)
Mr. and Mrs. Takashi Kako (P) *
Mr. and Mrs. Burton B. Kaplan (P) *
Mrs. Anne Pratt Ladd '48 *
Mr. William Lawton (P) *
Mrs. Hudas Schwartz Liff '47 *
Carol Channing Lowe '42
Mrs. Molly Howe Lynn '40
Mary Bacon Lyon '46, Charles W. Lyon II, '74
and Mark Edward Lyon '79 (Family Membership)
Morton and Sophia Macht Foundation
Mrs. Frances Wells Magee '51
Mr. and Mrs. Bernard Malamud *
Ms. Hope I. Mason '54 *
Mrs. David S. McLellan (Margaret Allen '40)
Mrs. Jane Wellington Merrill '40 *
George Meyerson (Virginia Tishman '46)
Marianne Petrie Miller '58 *

Mrs. Charles J. Mills (Dorothy Ordway '38)
Mrs. Emil Mosbacher, Jr. (Patricia Ryan '49)
Mrs. Richard W. Moyer (Joanne Gunst '54)
Mrs. John R. Muma (Edith Noyes '36)
Mrs. Robert S. Munger (Elizabeth Evans '37) *
Mr. and Mrs. Archibald R. Murray (Kay Crawford '56)
Ms. Patricia Newman Nanon '44
Mrs. Carole Kobin Newman '46
Mrs. Cynthia Kelley O'Neill '51 *
Mrs. Mary Webber Parker '41
Mrs. William M. Pike (Constance A. Payson '47)
Mrs. Harlan M. Richter (Ann MacFarlane '51)
Mr. and Mrs. D. Walter Robbins, Jr. (P)
Mrs. Edwin A. Rothschild (Ann Meyer '37)
Mrs. Agnes Saafeld *
Ms. Susan St. John-Rheault '65 *
Mrs. Rita Friedman Salzman '45 *
Mrs. Emily Flesheim Schaffner '39
Mr. John Scheuer '81 *
The Seiler Corporation
Mr. George C. Seybolt
Mr. and Mrs. Robert O. Shepler (P)
Mrs. Wilson F. Smith (Hannah Coffin '36)
Rebecca B. Stickney '43
Mrs. George B. Storer (Mary Hammond '46)
Mrs. Delbert Tenney (Margot Hartman '55) *
Mr. and Mrs. Julian Underwood (Suzanne Stockard '38)
Mr. and Mrs. Martin Victor (P)
Constance Wallace '66
Joan and Mort Weiner (Joan Maggin '52)
Mrs. E. Sohler Welch, Jr. (Mary Eddison '40) *
Mr. and Mrs. Gregory F. Wilbur (Carolyn Hinman Green '61)
Rowena A. Wyant '38 *
Mrs. Oscar S. Wyatt, Jr. (Martha Lynn Sakowitz '57)

Foundations and Corporations

Total Annual: \$96,849.72

Total Capital: \$311,717.00

Amerada Hess Corporation
Artson, Inc.
Banner Publishing Company
Bhaksis, Inc.
Energy Resource Management

Mary W. Harriman Foundation
Lemberg Foundation
The Agnes Lindsay Trust
John D. and Catherine T. MacArthur Foundation
The Andrew W. Mellon Foundation

New York Community Trust
Presser Foundation
Quaker Hill Foundation
Helena Rubinstein Foundation, Inc.
Sears Roebuck and Company

Seilers Corporation
Solon E. Summerfield Foundation
Vermont Foundation of Independent Colleges
Xerox Fund Foundation

Trustees and Former Trustees

Total Annual: \$168,089.85

Total Capital: \$304,142.96

Mr. Norman E. Auerbach
Mr. Jacques Barzun *
Ms. Susan Paris Borden
Mrs. William Beaty Boyd
Mrs. Hartley J. Chazen
Mrs. J. Negley Cooke, Jr. **
Mrs. Robert Davis
Mrs. Maurice A. Deane **
Mr. Fairleigh S. Dickinson *

Mrs. Alvin C. Eurich
Mrs. James D. Ewing **
Mr. Franklin L. Ford
Miss Helen Frankenthaler
Mr. William T. Golden
Lavinia Hall
Mr. Lucien M. Hanks
Mr. Andrew Heiskell

Ms. Pamela Hill *
Mr. Joseph S. Iseman **
Ms. Donna Jewell Jordan
Mr. Francis Keppel
Mrs. Julius Liff
Ms. Cornelia Ward Makepeace **
Mrs. Joan D. Manley **

Mrs. Albert R. Schreck
Mr. George C. Seybolt
Ms. Rebecca B. Stickney
Mr. Shepard Stone
Mrs. Nathaniel H. Usdan
Mr. John H. Williams



Jaqueth Hutchinson's polished steel "Digadigado" occupies stage center; at right are paintings by Cora Cohen and Helen Frankenthaler.

Friends of Bennington College

Total Annual: \$53,206.00

Total Capital: \$16,515.00

Miss Stell Andersen
Mr. & Mrs. Raymond Armstrong
Bennington Travel Agency, Inc.
Mrs. Paul A. Benjamin *
Mr. & Mrs. Edward J. Bloustein
Mr. L.R. Breslin
Mr. & Mrs. Thomas Brockway
Mr. Frank D. Brown
Miss Florence I. Burggraf
Dr. William J. Burnham
Mr. & Mrs. Charles Butcher *
Mrs. Reuben T. Carlson
Mr. & Mrs. Eugene Clark
F. Story Clark *
Dr. & Mrs. E. Robert Coburn
Mr. Russell Colvin
Dr. Thomas K. Cranfill *
Mr. & Mrs. E.H. Cumpston
Mr. James J. Darling
Mrs. E.L. DeGolyer *
Ms. Lucy H. Doane
Mrs. M.A. Douglass
Mr. & Mrs. Richard Eberhart *

Gillian E. Ehrich *
Terry Ehrich
Mr. & Mrs. William B. Eppler *
Mr. & Mrs. Alvin C. Eurich
Mr. & Mrs. Gordon Ewin *
First Vermont Bank & Trust *
Mr. & Mrs. Louis Fleischman
Dr. & Mrs. Curtis Flory
Mrs. Thomas Foster
Mr. George S. Franklin
Ms. Barbara Gallett
Mr. Frederick Goldstein
Miss Elizabeth Hall
Mrs. Maynard Hedding
Mrs. Andrew Heiskell *
Mrs. Alfred Hertz
Dr. John Holbach
Mrs. Lewis W. Jones
Mr. Harvey Kevorkian
Mrs. Hildegard H. Kincade
Mrs. Elmer Loemker
Mr. & Mrs. James MacLay
Mr. Philip MacPhail

Mr. & Mrs. Bernard Malamud
Dr. Julius and Edna E. Manes
Mrs. Edward Martenet
Mrs. Jean C. Martin
Mr. Joel Mason
Mr. Albert W. Merck
Mr. Matthew A. Meyer *
Mr. Henry B. Mitchell *
Ms. Eleanor B. Moore
Ms. Margaret Ingersoll Moore
Ms. Rose M. Morrissey
Mr. & Mrs. Duane Muckle
President Joseph S. Murphy
Mr. Irving Neuman *
Mr. Sheldon M. Neuman *
Mr. Howard A. Newman
Mr. Carl Norden
Mr. Louis Pappas
Mr. Joseph Parry
Miss Orrea Pernel *
Mr. Stanley R. Pike
Mrs. Don K. Price
Mr. & Mrs. Arnold Ricks

Mrs. Frances J. Ross
Mr. & Mrs. Peter A. Rubel
Mrs. Agnes Saalfeld
Mr. & Mrs. William R. Scott **
Miss Isabel Sherwood
Mr. & Mrs. Albert Shulman
Mr. & Mrs. Gerald Silbert
Mr. & Mrs. John Slocum *
Mrs. Bradford Smith
Mrs. Chard Powers Smith
Ms. Mary Bunting Smith
Miss Estelle Smucker
Mr. & Mrs. Philip Sperling
Mr. & Mrs. Horace Stacy
Miss Gladys Steven
Miss Edith Stewart
Mrs. John L. Terrell
Mr. & Mrs. Charles Tilgner
Mr. & Mrs. Phillip R. Viereck
Mrs. Mathilda Welter
Mr. George N. Wittreich
Mr. & Mrs. Douglas Wright
(1) Anonymous

*Capital giving only.

**Capital and Annual giving.

Parents of Alumni

Total Annual: \$38,533.95 Total Capital: \$6,020.00

- Mr. & Mrs. Marvin J. Abrams
Mr. Irving Adler
Mr. & Mrs. Albert T. Aladjem
Mr. & Mrs. Charles R. Alancraig
Mrs. Priscilla L. Alexander
Mr. & Mrs. Byron G. Allen
Mrs. Faith I. Allen
Mr. F.W. Andres
Mr. & Mrs. James Andrews
Mr. & Mrs. Thomas L. Apjohn
Mr. & Mrs. Nathan Appleman
Mrs. Leonard Aries
Mr. & Mrs. Dexter F. Arnold
Mr. & Mrs. Isah Attinson
Dr. & Mrs. Randolph Aurell
Mr. & Mrs. Donald Austin
Mr. John L. Ayer
Mr. & Mrs. Martin K. Balter
Mrs. E.C. Bancroft
Mr. & Mrs. Irving Bandremer
Mr. & Mrs. Norton Barber
Mrs. Sara R. Baron
Mr. & Mrs. Stephen Barr
Mr. & Mrs. C.M. Barringer
Dr. & Mrs. Stuart H. Bartle
Mrs. Sarah J. Baum
- Mr. & Mrs. Eric Beckjord
Mr. & Mrs. Howard L. Beer
Elizabeth Bergstrom
Mr. & Mrs. Arnold Berleant
Mr. & Mrs. C.W. Bertelsen
Dr. & Mrs. Joseph Bess
Dr. Seymour S. Bluestone
Dr. & Mrs. Laurence E. Bouchard
Mrs. William S. Breed
Mr. & Mrs. William Bradley
Ms. Kitty G. Brown
Mr. & Mrs. Russell Brown
Mr. & Mrs. Ralph E. Bryant
Mr. & Mrs. Frederick H. Burkhardt
Mr. Harry J. Burley
Mr. & Mrs. Geoffrey Bush
Mrs. Margaret S. Buzzelli
Mr. Thomas Cartelli
Mr. Henry T. Chandler
Mr. & Mrs. Walter J. Charow
Mr. & Mrs. Robert M. Clark
Mr. & Mrs. Rosser Clark
Mr. & Mrs. John P. Cleaver
Mr. & Mrs. Robert Clements
Mrs. Eugene Clifton
Mr. & Mrs. Herbert Cooper
Mrs. Charles Cottam
- Ms. Constance Crawford
Mr. & Mrs. F.K. Daniel
Mr. Miles Day
Mrs. Patricia N. Degener
Mr. & Mrs. Robert Desaritz
Mrs. Robert L. Dick
Mr. & Mrs. Robert Diebboll
Dr. & Mrs. Michael DiMaio
Mr. & Mrs. Donald Dobkin
Mr. & Mrs. C.E. Dodge
Mr. & Mrs. Peter Donovan
Mr. & Mrs. Sydney Drooker
Mr. Aaron Dubitzky *
Ms. Esse K. Dubow
Mr. & Mrs. Lewis Epstein
Mrs. Marjorie Erdman
Mrs. McClure Fahnestock
Mr. & Mrs. Myron S. Falk
Mr. & Mrs. D. Britton Faunce
Dr. & Mrs. Leonard Ferber
Mr. & Mrs. Martin Feuer
Mrs. Harry Fidel
Mrs. Anne Fink
Mr. Ray P. Foote
Mr. Howard W. Frankel
Dr. & Mrs. Robert C. Franks
Mrs. Barbara Freeman
- Mrs. Anne Frey
Mr. & Mrs. Richard Gangel
Mr. & Mrs. Alfred G. Gerosa
Mr. & Mrs. Gerald Gladstein
Dr. & Mrs. Julian L. Glatt
Mrs. Esther Goldsmith
Mr. & Mrs. Harold Goldstein
Mr. & Mrs. Leo Gottlieb **
Mr. & Mrs. Richard Gray
Mr. & Mrs. Alan H. Greene
Dr. & Mrs. Leo Gross
Mr. & Mrs. Stephen B. Grossman
Mr. & Mrs. Edward H. Gunst
Mr. & Mrs. Earl Hamner
Ms. Dorothea S. Hanna
Mr. & Mrs. John C. Harkness
Mr. & Mrs. Paul Harris
Mrs. Bertram H. Hegeman
Mr. & Mrs. Robert R. Hellmann
Mr. & Mrs. J. Welles Henderson
Mr. & Mrs. John W. Hill
Mr. & Mrs. Norman Hoberman
Mrs. Jean Hollyman
Mr. & Mrs. George A. Holt
Mr. & Mrs. David Hopkins
Dr. & Mrs. Thomas Hopkins
Mr. & Mrs. Thomas R. Horne



An untitled pen and ink drawing by the late David Smith, 1956. 31 by 43 inches.

Parents of Current Students

Total Annual: \$19,749.55

- Mr. & Mrs. George Abraham
Mr. & Mrs. Ian A. Aitchison
Mr. & Mrs. William H. Anderson
Mr. & Mrs. John Daniel Baker
Ms. Sydelle Baskind
Mrs. Sima Ann Bayless
Mr. & Mrs. G.B. Beitzel
Mrs. Courtney M. Benoist
Mrs. Connie L. Berger
Mr. Curtis J. Berger
Mr. & Mrs. Abraham Berkowitz
Mr. & Mrs. Nicholas J. Bertha
Rev. & Mrs. C. Frederick Buechner
Mr. & Mrs. John B. Bunnell
Mr. Herbert M. Canter
Mr. & Mrs. Townsel A. Combs
- Mr. & Mrs. John Cowles
Mr. & Mrs. Marshall Cox
Mr. & Mrs. Salvatore Dichara
Mr. & Mrs. Robert E. Dillon
Dr. & Mrs. John F. Donaldson
Mr. & Mrs. Sam T. Donta
Mrs. Mary B. Drake
Mr. & Mrs. Marvin Eisenstadt
Mr. & Mrs. Ralph J. Furness
Mr. & Mrs. Peter Geer
Mr. Norman James Glover
Mr. Fred B. Grill
Dr. & Mrs. Maurice Haddad
Mr. Peter V. Haight
Rev. & Mrs. Lyle G. Hall
Mr. & Mrs. Geoffrey A. Hampton
- Mr. & Mrs. Bernard P. Harris
Mr. & Mrs. Seymour Herskovitz
Mr. & Mrs. J. Donald Hill
Mr. Peter H. Jungkunst
Mr. & Mrs. Lewis M. Kanner
Mr. & Mrs. Burton B. Kaplan
Mr. & Mrs. George Labalme
Mr. Richard Malcolm Leach
Mr. Raymond J. Learsy
Mr. Elmer Lewis Long
Mr. & Mrs. Reino J. Makinen
Mr. & Mrs. Jules M. Melillo
Ms. Joanne Niver
Dr. Roy Ott
Mr. & Mrs. Frederick T. Reichman
- Mr. & Mrs. D. Walter Robbins
Mr. & Mrs. Jack Rosenberg
Mr. Marvin Rubinstein
Dr. & Mrs. Bernard Joseph Sauers
Mr. Lawrence Julian Schiller
Dr. & Mrs. Nelson Norman Schwartz
Mr. & Mrs. Robert O. Shepler
Mr. & Mrs. Leonard A. Stevens
Mr. & Mrs. Robert J. Stratton
Ms. Billie Jane M. Stubbins
Mr. & Mrs. Dan Stuart Tucker
Ms. Sherry L. Unger
Mr. & Mrs. Martin Victor
Mr. & Mrs. Otis Wilson



"Portrait of Girl on a Victorian Chair," an oil on canvas by Milton Avery. 23 by 17 inches.

Matching Gifts

Total Matching Gifts - Annual & Capital: \$42,204.78

Aerospace Corporation	Mrs. Harris Mayer	IBM Corporation	Mrs. Jean C. Martin
Aerospace Corporation	Ms. Roberta Ross Moore	IBM Corporation	Mrs. Sarah H. Parsly
Aetna Life & Casualty Foundation, Inc.	Mrs. B.T. Jacobs	IBM Corporation	Mrs. Geraldine C. Schwartz
American Broadcasting Company	Ms. Pamela Hill	IBM Corporation	Ms. Donna S. Sinanian
American Broadcasting Company	Mr. & Mrs. Takashi Kako	IBM Corporation	Mr. Richard A. Toupin
American Telephone & Telegraph Company	Ms. Julie Lapitino	International Paper Company Foundation	Ms. Margot Dockrell
Atlantic Richfield Foundation	Mrs. J.P. Durfee, II	International Paper Company Foundation	Mr. & Mrs. John J. Stephens
Bethlehem Steel Corporation	Mr. William Boardman	Johnson and Higgins	Mrs. George D. Benjamin
Burlington Industries Foundation	Mr. Robert Levitt	Johnson and Johnson	Dr. & Mrs. Richard M. Watson
California & Hawaiian Sugar Company	Mr. Donald P. Falconer	Kennecott Copper Corporation	Mr. & Mrs. Woodward Thomson
Carrier Corporation Foundation, Inc.	Mr. John L. Ayer	Kidder Peabody Foundation	Mrs. Gregory F. Wilbur
Chevron U.S.A., Inc.	Mr. & Mrs. Edwin W. Miller	Koppers Company Foundation	Mr. Robert Weidlein
Chubb & Son, Inc.	Mrs. Newell G. Alford, Jr.	Kraft, Inc.	Mr. E.M. de Windt
CIBA-GEIGY Corporation	Mr. Donald A. Glovich	Lummus Company	Mr. & Mrs. Robert M. Clark
Cleveland-Cliffs Foundation	Mrs. John L. Horton	Marsh & McLennan Companies	Mr. Robert Clements
Communications Satellite Corporation	Mr. Jeremy F. Parker	Marsh & McLennan Companies	Ms. Susan P. Kucsma
Dart-Kraft Corporation	Mr. & Mrs. Sol S. Jaffe	Minneapolis Star and Tribune	Mr. & Mrs. John Cowles, Jr.
Digital Equipment Corporation	Mrs. Lee B. Menefee, II	Mobil Foundation, Inc.	Mr. Thomas L. Apjohn
Digital Equipment Corporation	Ms. June M. Payne	Morgan Guaranty Trust Company	Mrs. K.R. Van Horn
R.R. Donnelley & Sons Company	Mrs. Gordon K. Ingwersen	National Life Insurance Company	Mrs. Katrina Edwards Pelkey
Dow Jones & Company, Inc.	Mrs. Edward A. Behr	New England Merchants National Bank	Mr. George C. Seybolt
Dow Jones & Company, Inc.	Ms. Jeannie Cross	New England Mutual Life Insurance Company	Mrs. Barbara B. Coolidge
Dun & Bradstreet Foundation	Ms. Rowena A. Wyant	New York Telephone Company	Mr. Herbert Cooper
Eaton Corporation	Mr. E.M. de Windt	New York Telephone Company	Mr. Michael Kraft
Eaton Corporation	Mr. & Mrs. George Toumanoff	New York Times Company Foundation	Mr. & Mrs. S. Lee Kanner
Emhart Corporation	Mrs. Peter Tavernini	Ohio Bell Telephone Company	Mr. E.M. de Windt
Exxon Education Foundation	Ms. Linda Berkowitz	Pet Incorporated	Mr. & Mrs. Oddvar Solstad
Exxon Education Foundation	Mr. Raymond L. Heinrich	Post-Newsweek Stations	Mr. Sheldon W. Brown
Federated Department Stores, Inc.	Mrs. Bernard S. Klayf	Quaker Oats Foundation	Mr. Henry T. Chandler
Fiduciary Trust Company	Mrs. Katharine S. Plimpton	Raytheon Company	Mr. & Mrs. Alan H. Greene
Fingerhut Corporation	Mr. John Schlenker	Reader's Digest Foundation	Mrs. Jeane Garment
First National Bank of Boston	Mr. Richard Malcolm Leach	Reliance Insurance Companies	Mrs. Margaret S. Broadley
Gannett Newspaper Foundation	Miss Jane Harriman	S & H Foundation, Inc.	Mrs. John P. Crain
General Dynamics Corporation	Mr. William J. Webb	Schering-Plough Foundation, Inc	Ms. Barbara Manners
General Electric Foundation	Ms. Jane Kaufman	Singer Company Foundation	Mr. William Lawton
General Electric Foundation	Ms. Kaye G. Matthews	Singer Company Foundation	Ms. Rachel A. Michaud
General Electric Foundation	Mrs. Donald F. Torrey	Sony Corporation of America	Mr. Robert E. Dillon
General Reassurance Corporation	Mr. & Mrs. Robert O. Shepler	Stackpole Corporation	Mr. Lyle G. Hall
Government Employees Insurance Company	Ms. Patricia Dubin	Stanley Works	Mr. Edwin W. Peterson
Grace Foundation, Inc.	Mr. D. Walter Robbins	Textron Charitable Trust	Mr. Andrew J. Pennella
Grace Foundation, Inc.	Mrs. Herbert C. Rosenthal	Thermo National Industries, Inc.	Mr. & Mrs. Donald Dobkin
Honeywell Inc.	Mr. & Mrs. John S. Gittins	Time Incorporated	Mrs. George Benjamin
Honeywell Inc.	Mr. Leonard R. Weisberg	Time Incorporated	Mr. Andrew Heiskell
Houghton Mifflin Company	Ms. Jacqueline C. Kennedy	Time Incorporated	Mrs. Joan D. Manley
Hughes Aircraft Company	Ms. Linda S. Porter	Time Incorporated	Ms. Victoria Monks
IBM Corporation	Mr. Marvin J. Abrams	Time Incorporated	Ms. Anna Shapiro
IBM Corporation	Mr. & Mrs. Charles Alancraig	Time Incorporated	Mr. Nicholas Stephens
IBM Corporation	Mr. & Mrs. G.B. Beitzel	Travelers Insurance Company	Mr. & Mrs. Cyrus Miller
IBM Corporation	Mrs. Virginia Brecher	Travelers Insurance Company	Mrs. Anne C. Smith
IBM Corporation	Mrs. Judith S. Davidson	United Technologies	Mr. James Kerrigan
IBM Corporation	Mrs. John C. Howson	Warner-Lambert Company	Mr. N.J. Bertha
IBM Corporation	Ms. Susan J. Johnson	Xerox Fund Foundation	Mrs. Walter L. Olesen
IBM Corporation	Mrs. James F. Manning, III		

In Memory Of

Dr. Theodore Bennett
Mr. David Brackman
Mr. Donald Brown
Mr. Herbert Copellman
Mr. Edward Dangel
Miss Joan Sidney Drooker '54
Mr. Bertram Druker
Mr. Ruby Epstein
Mary S. Hopkins
Mrs. Elizabeth Reed Keller
Mr. Benjamin Kronish
Mr. Theodore Lane
Mrs. Ernestine Cohen Meyer
Mrs. Dorothy Mintz
Ms. Sandra Mallin Plehn '56
Mr. William Rodman
Mr. Samuel Slosberg
Mrs. Berenice Loeb Sloss '36
Mr. Gregory Tucker

In Honor Of

Mr. John Caswell Smith
Miss Jennifer Zuch '82
Mr. Wallace Fowlie
Mrs. Joan D. Manley
Mrs. Sandra K. Slotnik

Regional Benefits

Total Annual: \$7,125.51
Total Capital: \$560.00

Fairfield County Alumni Association
New York Theatre Benefit

Special Students

Total Annual: \$850.00

Mr. Charles Caffall
Mr. David Crowell
Mr. Michael Degener
Ms. Ineke Sluiter



*Diego Rivera's "Communeros de Paris."
Guache, 1922. 20 by 16 inches.*

Gifts In Kind

Pat Adams
Alfred University - Herrick Memorial Library
Mr. Ted Allen
The American Food Service Association
Mr. Andrew Austin
Dr. Arpad Barna
Mrs. Roland L. Baum
Bennington College - Publications Office
Bennington College - Social Science Division
Ms. Roberta Berke
Ms. Margaret M. Bishop
Black Oak Press
Ms. Megan Boyd
Thelma Bullock
Mrs. Fred Burkhardt
Ms. Sandy M. Campbell
Canon U.S.A., Inc.
Ms. Susan Cantrick
Mr. Donald Carmichael
The Carnegie Foundation for Advancement of Teaching
Cornell University Library
Alicia Colombi de Monguio
Mr. Nicholas Delbanco
Edison Electric Institute
Education Advisory Service
Mrs. Alvin C. Eurich
Ms. Anne Slade Frey
Dr. Israel Goldstein Publications
Mr. Gene Goosen
Mr. Georges Guy
Mr. & Mrs. Lucien Hanks
Ms. Tina Hansar
Sophia Healy
Mr. & Mrs. William Hixson, Jr.
Mrs. Bernadine O. Hooper
Mr. David D. Horowitz
Indiana University - Comparative Literature
Mr. & Mrs. William F. Ingraham
Interdok Corporation

Japan House Gallery
Mr. Ben Karp
Ms. Joyce Keener
Mr. Kenneth Kensinger
Mr. Edward Keough
Mr. Ben Kimpel
Joanna Kirkpatrick
Ms. Bonnie Kreps
Kutztown State College - English Department
Ms. Lisa Lanzi
Mr. Karl Laubscher
Mrs. I. Scott Leibiger
Mr. Georges Longree
Mr. Florian Louisoder
Mr. David H. Lowenherz
Mrs. Alice Atkinson Lyndon
Donlyn Lyndon
Ms. Eileen M. Mackesy
Mr. Bernard Malamud
Mrs. Joan D. Manley
Marlboro College
Mrs. John W. McEachren
The Edwin Mellin Press
Mrs. Francis Merchant
Merrill Transport Company
Mrs. Jacqueline Miller-Dunnington
Mr. A.J. Monack
The Monks of New Skete
President Joseph S. Murphy
Mr. Frederick M. Myers
Mr. Ned Pattison
Ms. Wendy Perron
Philip Morris, Inc.
Ms. Ilse Plume
Poly Two Press, Inc.
Quartet Books
Dr. Enders A. Robinson
Mr. Michael Rock
Mr. Robert Rowan

Mrs. George R. Rowland
Mr. John Savlov
Mr. Donald Schatz
Mr. Robert Schmid
Mr. Ben Schwartz
Mrs. Lewis M. Schwartz
Ms. Nancy Scott
Mr. Paul Scott
The Seattle Review — University of Washington
Ms. Evelyn Shaw
Mr. Carlton Shaw
Betsy Sherman
Mr. Harvey Silets
John Simon Guggenheim Memorial Foundation
Mr. Seymour Simckes
Barbara Howes Smith
The Society for the Publication of the Chronicles of the
Catholic Church in Lithuania, Inc.
State University of New York at Albany
Rebecca B. Stickney
Mr. G. Harry Stopp, Jr.
Benjamin B. Stout
Studiengesellschaft fur Zeitprobleme e.v.
Sally Sugarman
Testing Research Fund
Lowber Tiers
Henry M. Tuttle Company, Inc.
University of Colorado at Denver - Arts and Humanities
University of Oregon
Dr. Magdalena Usategui
Ms. Polly N. Victor
Mrs. George W. Wheelwright, III
Ms. Cuchi White
Mrs. Alice Wingwall
Mr. Stephen Woodbridge
Mr. David G. Yuengling

* Capital giving only.

** Capital and Annual giving.

1936

Class Agent:
Alene Potter Widmayer
(Mrs. Charles Widmayer)
9 Conant Road
Hanover, NH 03755

Total Annual: \$10,460.00
Total Capital: \$23,372.82

Class Participation:
58.1% Annual
22.6% Capital

Jean Conner Blouin
Eldora VanBuren Boeve
Mary Rice Boyer
Jean Michie Crafts
Asho Ingersoll Craine **
Gladys Ogden Dimock
Louisa Richardson Dreier
Rosamond Taylor Edmondson
Yvette Hardman Edmondson
Atossa Herring French
Fletcher Wardwell Gaylord **
Mary Gregory
Eleanor Alexander Griffin
Kathleen Reilly Harris *
Elsa Voorhees Hauschka **
Edwina Babcock Hess
Anne Sturges Kiley
Isabella Lee Livingston
Elizabeth Shurcliff Lowell
Jill Anderson MacKnight
Jane Woodhouse McLaughlin
Edith Noyes Muma
Dorothy Case O'Brian
Margaret Suter Rood **
Grace Sullivan Scanlan **
Hannah Coffin Smith **
Margaret Spencer **
Shirley Stanwood
Helen Stewart *
Louise Friedberg Strouse
Gertrude Doughty Swartz **
Jean Moore Toll
Emalea Warner Trentman **
Marion Lambert Vanderbilt
Bessie Schonberg Varley
Louise Stockard Vick *
Frances McElwain Wakeman
Alene Potter Widmayer **
Helen Gregory Yardley **

1937

Class Agent:
June Parker Wilson
(Mrs. Kenneth Wilson)
1148 Fifth Avenue
New York, NY 10028

Total Annual: \$47,333.62
Total Capital: \$8,242.75

Class participation:
52% Annual
16% Capital

Margaret Robinson Angell
Anne Gardiner Archibald
Ruth Holmes Bacon
Ellen Conried Balch
Lucy Lee Bennett
Mary Johnson Blank
Elizabeth Brown
Mary Swan Brown **
Christina Boardman Buckley
Nancy Reynolds Cooke **
Anne Ross Dechert
Margaret Smith Denison
Rachel Randolph Doucette
Emily Hornblower Earley **
Ruth Dewing Ewing **
Zipporah Shill Fleisher
Lydia Allyn Graves
Anne Runkle Hose *
Jane Hutchins
Barbara Saul Jacobson
Mary Lou Taylor Kenyon
Mary Denison Lanfer *
Margaret Lawsing Magnusson *
Joan May
Elisabeth Paine Merriss
Elizabeth Evans Munger
Prudence Holmes Near
Jean Porter Nickels
Lila Franklin Nields **
Margaret Edge Nightingale
Margaret Goodwin O'Brien
Joan Brush Parish
Ann Meyer Rothschild
Carolyn Crossett Rowland
Mary Shaw Schlivek **
Rhoda Scranton Sloan
Julie Rice Speakman
Harriet Stern Strongin **
Mary Edwards Thorne-Thomsen
Elizabeth Ketchum Tucker *
Ruth Magnusson Wathen-Dunn **
Helen Webster Wheelwright
June Parker Wilson

1938

Class Agent:
Barbara Coffin Norris
(Mrs. Howard E. Norris)
20 Wyndemere Road
Bloomfield, CT 06002

Total Annual: \$7,680.31
Total Capital: \$2,198.00

Class participation:
54.5% Annual
13.6% Capital

Emily Sweetser Alford **
Hope Hilton Andrus
Dorothy Sands Beers
Marcia Ward Behr *
Mary Jane Sheerin Bennett
Jane Carrott Boardman
Frances Pollak Bourdy **
Louise Coles Bridgeman **
Ruth Carter
Jane Buckley Chapman *
Barbara Deming
Lucy Greenbaum Freeman
Reba Marcus Gillman
Sylvie Redmond Griffiths
Isabel Emery Haigh *
Barbara Webb Henry
Constance Wigglesworth Holden
Priscilla Janney Hollis
Elisabeth Zimmerman James
Nancy Elliott Kelly
Caryl Field Kittredge
Emily Jamieson Knapp
Margaret Altschul Lang
Betty Lindeman Leonard
Peggy Dennis Love
Emeline Howe Maipas *
Margaret Berger Miller
Dorothy Ordway Mills
Sara Brownell Montanari **
Mary Allen Newman
Barbara Coffin Norris **
Anne Bretzfelder Post
Alice Otis Potter
Ellen Osgood Quinn
Tacie Sergeant Ranson
Edith Miller Roberts
Jean Hinton Rosner
Mary-Lowber Tiers
Suzanne Stockard Underwood
Rowena Wyant

1939

Class Agent:
Alice Pulsifer Doyle
(Mrs. Alice P. Doyle)
336 Mountain Road
West Hartford, CT 06107

Total Annual: \$11,586.10
Total Capital: \$5,896.35

Class participation:
63.4% Annual
16.9% Capital

Sally Pushee Appel **
Rosemary Ostrander Ballinger
Jane Rogers Beebe **
Eugenie Rowe Bradford **
Elizabeth Mills Brown
Alice Rowley Cheney
Caroline Sizer Cochran
Elizabeth Schoepperle Colman
Lloyd Hord Condit
Dorothea Smith Coryell
Dorothy McWilliams Cousins **
Charlotte Goodwin Craig **
Harriet Brigham Dickson **
Elizabeth Capehart Donenfeld
Alice Pulsifer Doyle
Margery Osborn Erickson
Nancy Forgan Farnam
Mary Harriman Fisk *
Laura James Foster
Jamie Porter Gagarin **
Honora Kammerer Gifford *
Caroline Welch Huntington
Constance Fox Ingles
Laura Jennings Ingraham
Janet Fraser Jones **
Marcia Savage Klopman
Jean Hepburn Lee **
Joan McArthur MacKinnon
Nina Taylor Marden
Pauline Foraker Marshall
Natalie Kimball McMillan **
Antoinette Dangler Newman
Joyce Abbot Noyes
Helen Strong Oechler
Mary Jones Riley
Cecilia Drinker Saltonstall
Barbara Sapinsley
Emily Flesheim Schaffner
Virginia Lunsford Scull
Gretchen Van Tassel Shaw
Catherine Davis Stonington
Alison Green Sulloway

Louise Chidsey Torrey
Eunice Herrick Trowbridge
Phyllis Wright Turner
Elizabeth Mason Walbridge
Edith Conklin Weaver
Patricia Farley White

1940

Class Agent:
Florence Lovell Nielsen
(Mrs. Francis W. Nielsen)
Canaan, NY 12029

Total Annual: \$54,131.00
Total Capital: \$25,100.00

Class participation:
54.1% Annual
18.9% Capital

Joan Greenebaum Adler *
Aline Wharton Appel *
Joan Ellett Benjamin *
Phyllis Torrey Bosee
Alice Phillips Bowen
Lucy Glazebrook Bradley
Margaret Myers Byrne
Hoima Forbes Cherau **
Anne Thomas Conklin
Alice Borchard Couch
Constance Johnson Crown
Mildred Hubbard Cummings
Minnette Hunsiker Cummings *
Edwina Pattison Daniels
Virginia Todahl Davis
Carolyn Gerber Diffenbaugh
Vera Hall Dodd
Jessie Ann Nelson Engle
Phyllis Epstein
Isabella Perrotta Erickson **
Lavina Kelly Falconer
Leila Vaill Fetzner *
Marcia Grossman Goodfriend
Barbara Willis Heinrich
Marne Lloyd-Smith Hornblower
Florence Uptegrove Horton **
Molly Howe Lynn
Helena Mason Lyon **
Denise Underwood Martin
Carola Manning McEachren **
Margaret Allen McLellan
Jane Wellington Merrill
Kathleen Harriman Mortimer **
Florence Lovell Nielsen **
Caroline Wickett Oliver
Priscilla Porter
Constance Mather Price
Helen Newcomer Rawlings
Jean Wood Runyon
Mary-Averett Seelye
Judith Hodson Street *
Catherine Burch Symmes
Martha Annett Taylor
Mary Eddison Welch
Elizabeth Thornley Whitman
Martha Erskine Williams *
Jane Holmes Wood

1941

Class Agent:
Sarah Knapp Auchincloss
(Mrs. J.H. Auchincloss)
RD 2 Rippleton Road
Cazenovia, NY 13035

Total Annual: \$20,224.26
Total Capital: \$1,565.00

Class participation:
67.7% Annual
9.2% Capital

Edith Barbour Andrews
Sarah Knapp Auchincloss
Jean Davidson Baldwin
Sara Carter Balogh *
Mary Stimson Bareiss
Faith Richardson Barnett
Patricia Hickox Beall
Katrina Voorhees Berman
Marion Krantz Birmingham
Margaret McConn Bishop
Elizabeth Henry Boyce
Pamela Richards Brooks
Barbara Heywood Brownell **
Helen Keeler Burke
Adele Bookman Burnett
Elaine Pear Cohen
Anne Clark Culbert
Barbara Walker Day
Joan Thomson Day
Ruth Annis Delascoutx
Jane Hartington Faytle *
June Spreter Felix
Anne Forbes
Margaret Stein Frankel **
Diana Allyn Granbery
Suzanne Heller Harris
Stephanie Townsend Head
Theodosia Burr Kelsey
Carol Haines McBride
Agnes Quisenberry Meyer
Anne Eaton Parker

Mary Webber Parker
Evalyn Watson Peterson **
Phoebe Arnold Rankin
Betsey Marden Silverman
Susan Winter Stedman
Barbara Kirchmaier Sutherland **
Margaret Dudley Thurber
Elizabeth Plimpton Tilton
Helen Cummings Vanderbilt
Martha Lockwood Van Emburgh
Janet Walker
Margery Michelson Webbe
Dotha Seaverns Welbourn
Ernestine Reutter White
Katharine Kidner Wise

1942

Class Agent:
Dorothy Coffin Harvi
(Mrs. Charles J. Harvi)
333 Dedham Street
Dover, MA 02030

Total Annual: \$5,810.21
Total Capital: \$2,518.00

Class participation:
63.1% Annual
20% Capital

Carolyn Hawks Bowerman
Lilian Deissler Bowler
Eleonora Eaton Brooks
Patricia Hiller Chadwick
Ann Whiteley Childs
Charlotte Watson Cole
Joan Stokes Creigh
Nancy Fahnestock Denniston
Enid Klauber Dillon **
Joan Collier Donofrio
Lucille Kron Duncan **
Sylvia Thayer Ferry
Diana Marvin Gibson **
Catherine Avery Grove
Dorothy Coffin Harvi **
Susan Hedge Hossfeld **
Deborah Froelicher Howe
Celine Roll Karraker
Elsa Woodbridge Kistler **
Helen Levine Koss **
Mary Heeg Leckie
Elizabeth Wheeler Lomele **
Carol Channing Lowe
Barbara Willis Mordvinoff*
Margaret Twichell Mowbray *
Lydia Schoepperle Paxson
Ruth Schwartz Pearce
Valerie Pottberg Prime
Jeanne Michaels Radow *
Mary Hammond Rodman
Katharine Wyman Roll **
Hilda Wheelwright Sewall
Eleanor Kammerer Spence
Nina Howell Starr
Grace Thomas Stimmell
Margaret Klaw Tenney
Marion Carlstrom Trick
Rebecca Lucas Ueland
Margaret Brush Vandermade
Helen Masenhimer Verduin
Mary Wood Victor
Joan Strong Warmbrunn *
Elizabeth Walsh Whitin
Cynthia Jenkinson Yandell
Virginia Wilson Yerxa

1943

Class Agent:
Muriel Cummings Palmer
(Mrs. Muriel Palmer)
28 Main Street
North Bennington, VT 05257

Total Annual: \$7,825.85
Total Capital: \$4,500.50

Class participation:
47.6% Annual
8.5% Capital

Lucile Bloch Adler
Jean Short Aldrich
Jane Allen
Elizabeth Hubbard Banker
Ann Wickes Brewer
Mary Achilles Coggeshall
Irene Crosby
Joan Lewisohn Crowell *
Jane Meyerhoff de Rochemont
Elizabeth Bope deWindt
Anne Michie Fairbank
Tina Safranski Fredericks
Elinor Carr Glass
Janet Briggs Glover **
Priscilla Sherman Goldsmith
Jane Allum Grant
Ruth Davis Green **
Eleanor Durkee Hope
Janet Pierce Hunsicker
Ann Mills Hyde
Roberta Dixon James
Ann Barrett Johnson
Nancy Hay Knapp **
Frances Berna Knight **
Faith Colgan Kuhns

*Capital giving only.

Alicia Ruhl MacArthur
Mary Jane Meyer
Lisa Adams Moulinier
Muriel Cummings Palmer
Hildegard Pelau
Ann Strieby Philips
Yvonne Roy Porter
Barbara Bacon Rosenberg
Carol Christopher Schmitz
Evelyn Glass Shakespeare *
Pearl Friedman Staller **
Rebecca B. Stickney
Olive Pitkin Tamm
Annette Kolin Tarr
Nika Pleshkova Thayer
Vivian Lescher Werner
Margaret Goodhue Whitman

1944

Class Agent:
Joan Cummings Franzen
(Mrs. Joan C. Franzen)
PO Box 65
Skowhegan, ME 04976

Total Annual: \$4,305.00
Total Capital: \$2,688.50

Class participation:
35.6% Annual
13.8% Capital

Elizabeth Sizer Allen
Betsy Stockstrom Augustine **
Rosamund Reed Bodman *
Josephine Swift Boyer
Polly Kirsten Breul
Shirley Broughton
Phyllis Carton Contini *
Elizabeth Herriott Davis
Rhoda Goodman Falk
Marianne Wilson Finckel *
Joan Cummings Franzen **
Joann Straus Haimson
Janet Frey Harte
Sally Litchfield Hein **
Doria Higgins
Mary Otis Hivnor
Grace Ewing Huffman
Barbara Ridder Irwin
Judith Knapp Johannet
Daphne Eaches Jones
Ann Hamill Koehne
Eva Hegemann Ladd
Phyllis Preston Lee
Ruth Shaw Linsley
Eleanor Trumbull Lowell *
Margaret Young Myhrum
Patricia Newman Nanon
Marjorie Hill Noon
Sara Smith Norris
Dorethy Ayers Paaby **
Adelaide Rubin Perloff
Allyn Johnson Shepard
Mary Winner Stockwell
Druanne Blackmore Sweetser **
Janet MacColl Taylor *
Eleanor Wayland Thomson **
Joan Bayne Williams *

1945

Class Agent:
Rita Friedman Salzman
(Mrs. Herbert Salzman)
31 Owenoke
Westport, CT 06880

Total Annual: \$5,915.00
Total Capital: \$8,313.00

Class participation:
51.3% Annual
10% Capital

Joan Wilkinson Aalfs
Rachel Barker **
Geraldine Babcock Boone
Otis Kidwell Burger
Patricia Crocker Cross
Annie Morecroft DeCaprio
Marie-Louise Thaxter Dietrichson
Marnie Rogers Donnelly
Susan Lancaster Flanders **
Martha Taylor Gibson
Margot Loebli Gumpfort
Elizabeth Harvey **
Harriet Gentry Himburg
Flora Bond Hollinger
Julia Barnwell Houskeeper
Martha Egloff Hume
Ethel Winter Hyman
Dorothea Douglas John
Judith Bailey Jones
Aurelia McIntyre Klayf
Patricia Schaeffer Knopp
Edith Dinlocker Kuhn **
Dorothy Caplow Lang
Joan Rorimer Lettvin
Barbara Stark Marcus **
Rosalie Holtsberg Mayer
Joan Merriss
Emily Knight Oppenheimer **
Olga Von Hartz Owens
Helena Palmer Pappenheimer
Julia Randall
Priscilla Baker Reveley

**Capital and Annual giving

Jane Crowell Rieffel
Rita Friedman Salzman
Barbara Oldden Smith **
Ann Rogers Stamps
Carolyn Arnold Westwood
Mary Jo Cavender Wilson
Penelope Perkins Wilson **
Polly Ridlon Wilson
Mildred Smallen Zegri

1946

Class Agent:
Mary Wiggin Bertaccini
(Mrs. Lincoln C. Bertaccini)
Box 243, East Street
Litchfield, CT 06759

Total Annual: \$71,548.33
Total Capital: \$2,800.50

Class participation:
46.8% Annual
11.4% Capital

Charlotte Cullingham Acer
Mary Wiggin Bertaccini **
Karen Johnson Boyd
Barbara Burton Boyle
Louise Perry Carpenter
Constance McMillan Carpenter
Louise Rockwood Cies **
Sally Igoe Cole
Patricia Chapin Condon
Joya Bovingdon Cox **
Idolene Hegemann Darrow
Kelita Boas Dinsmore **
Betty Stebbins Dulany
Janet Hart Golden **
Mary Sutherland Gussow
Frances Harris **
Dorothy Barbour Hayes **
Harriet Swift Holdsworth
Mary Bacon Lyon
Judith Lindau McConnell
Katharine Evarts Merck
Virginia Tishman Meyerson
Carole Kobin Newman
Patricia George Peterson
Katharine Sawtell Plimpton **
Martha Stokes Price **
Nancy Kluge Rumery
Carolyn Mackie Savage
Ruth Thomson Shapiro
Margaret Stearns
Jean Noyes Takal
Margaret Shackelford Toms
Eileen MacVeagh Toumanoff
Nonie Heed Vigren
Jean Thompson Vogelbach
Ann Breese White
Eleanor White Wright

1947

Class Agent:
Constance Payson Pike
(Mrs. William Pike)
11 Ferry Road
Old Lyme, CT 06371

Total Annual: \$5,635.88
Total Capital: \$7,118.00

Class participation:
29.5% Annual
9.5% Capital

Bonny Bonoff Birnbaum
Marilyn Miller Bowie
Janet Loper Coye
Mabel Coddington Deakman
Joy Milam Dennis
Suzanne Cavanaugh Durfee
Eleanor Rockwell Edelstein
Glory Erdman
Suzanne Eckfeldt Harding **
Barbara Ferrell Hero
Helen Chapman Hucker *
Mary Lou Chapman Ingwersen **
Peggy Manheim Irwin *
Ruth Sanders Johnson
Sally Johnson Knox
Hudäs Schwartz Liff
Beatrice O'Connell Lushington
Elizabeth Olson Marshall **
Linda Strobel Minoli
Doris Corn Muscatine **
Marjorie Soule Orrick **
Kathleen Oliver Parker
Constance Payson Pike **
Betty Long Rader
Sarah Winston Robinson
Ann Hart Thayer
Michal Isbell Thompson
Ella Russell Torrey *
Patricia Walker
Mary Watson
Elizabeth Armes Webb

1948

Class Agent:
Mary Sinclair Krakora
(Mrs. Joseph Krakora)
3112 Q Street NW
Washington, DC 20007

Total Annual: \$103,292.38.
Total Capital: \$1,096.25

Class participation:
45.1% Annual
6.1% Capital

Simone Cadgene Attwood
Sumiko Fujii Biderman
Marydes Chapin Britton
Eleanor Carlson Castro
Mary Wells Cypher
Marion Day
Cynthia Whitney Drayton **
Marilyn Lord Dux
Barbara Edwards
Joyce Fondren Elbrecht
Margaret Mallia Ender
Elizabeth St. John Fennel
Letitia Evans Frank
Baba Foster Freeman
Edelgard Zerbs Frye
Diane Bishop Gersten
Katharine Bunker Getsinger **
Joanna Pratt Goodspeed
Sonya Rudikoff Gutman
Louise Sinkler Hoffman
Anne Pratt Ladd
Edith Salomon Lenneberg
Nancy Smith Lovejoy **
Eileen Josten Lowe
Nancy Whitney Lutz
Elinor Gottlieb Mannucci
Jeanne Johnson McCarthy *
Annora Harris McGarry **
Mary Burrell Meldrum
Claire McIntosh Miller
Dorothy Morris
Charlotte Fowler Nairn
Lucy Blatchford Pinkerton
Naomi Siegler Savage
Nancy Gregg Sippel
Jean Ganz Sloss
Elizabeth Blanchard Tankoos
Grace Russell Wheeler

1949

Class Agent:
Jeannette Winans Bertles
(Ms. Jeannette Bertles)
277 Baltic Street
Brooklyn, NY 11201

Total Annual: \$3,650.00
Total Capital: \$420.00

Class participation:
32.3% Annual
6.1% Capital

Miriam Marx Allen
Jean McAllaster Baker **
Phyllis Sidenberg Benham
Jeannette Winans Bertles
Marion Marsh Birney
Margery Brown Booker
Jane Lougee Bryant
Margaret Leake Craig
Kate Crichton
Gloria Berger Drehmel
Helen Frankenthaler
Carol Stettinius Gorman
Rita Gillette Gottsegen
Carolyn Vreeland Leboutillier
Maribel Asher Leiter
Nancy Lindau Lewis *
Carol Black Livaudais
Barbara Cart Macauley
Barbara Corey Mallonee
Jean Moffat Miraglia
Patricia Ryan Mosbacher
Diane Kremm Nolan **
Ann Symington Platt
Eloise Miller Poor
Gertrude Yang Renaud
Felicia Warburg Rogan
Nancy Hauck Russell *
Susan Pierce Stewart **
Elizabeth Johnson Stickney
Edith Dulles Sylvester
Anne Jennings Torrey
Rosemary Brown Vanamee **
Christina Marquand Welch
Gina Raffetto White
Sally Wells Whiteley

1950

Class Agent:
Patricia Hansen Franks
(Mrs. James B. Franks)
25 Old Farms Lane
New Milford, CT 06776

Total Annual: \$3,072.92
Total Capital: \$750.00

Class participation:
31.5% Annual
9.9% Capital

Penelope Hartshorne Batcheler
Joan Hunt Bushnell *
Jennifer Brown Cecil
Joan Megnin Clifford **
Barbara Bowles Coolidge
Louise Wynne Corbett

Kay Brown Cunningham
Patricia Hansen Franks
Mary Gibson Geer
Anne Whittier Geier
Jane Roberts Giedraitis
Alison Biddle Gist
Carol Baumgarten Goldwyn
Jane Cochrane Hallowell
Edmar Von Henke Hoppe
Waldo Brighton Jones
Constance Terhune Lancaster *
Beatrice Van Cleve Lee
Betty Gillett Leitch
Lois Klopfer Levy
Susan Worcester Light *
Anne Kenworthy Lowe *
Martha Klein MacDonald *

1951

Class Agent:
Irma Hagemann Thexton-Willis
(Mrs. Irma Thexton Willis)
6509 81st Street
Cabin John, MD 20818

Total Annual: \$18,015.00
Total Capital: \$15,387.14

Class participation:
38.8% Annual
5.1% Capital

Joy Bryan Bacon
Ann Irwin Bourgois
Sarah Pickells Burrill
Barbara Ushkow Deane **
Mary Carpe Desantis
Barbara Bedell Dow
Elaine May Drew
Laura Franklin Dunn *
Carol Diamond Feuer
Olivia Pattison Garfield
Joan Dubrow Gross
Marie Maxon Hadwen
Olga Landeck Heming
Diane Lloyd-Smith Hewat
Doris Chapman Hinds
Barbara Turner Ives
Janet Roosevelt Katten **
Barbara Allen Kennedy
Elizabeth Olsen Kyburg
Joan Hutton Landis
Kristin Curtis Lothrop **
Sylvia Canova Lukens
Frances Wells Magee **
Joyce Berger Mahoney
Ann Webb McDowell
Gail Gardner Newman
Ruth Rigler Olincy
Cynthia Kelley O'Neill
Renee Bennett O'Sullivan
Ann MacFarlane Richter
Ann Chatfield Slocum
Nancy Ray Smith
Margaret Hubert Spencer
Tina Williams Sunstein
Irma Hagemann Thexton-Willis
Suzanne Lemberg Usdan
Elizabeth Wagner
Elizabeth Clement Weidlein
Jeannette Peirce Woman

1952

Class Agent:
Sophie Ruderman Weber
(Ms. Sophie Ruderman Weber)
177 Duxbury Road
Purchase, NY 10577

Total Annual: \$2,980.00
Total Capital: \$1,959.00

Class participation:
44.7% Annual
12.9% Capital

Augusta Welfer Bartlett
Sally Rounds Bruch
Jill Warburg Cartter
Hester Haring Cason
Virginia Sweet Cobb **
Edith Askin Ehrlich **
Louise Dickson Hardie
Mary House Higson *
Elizabeth Ivory
Jane Neal Keller **
Priscilla Norton Kennedy
Anne Kobin King
Caroline Crane Kiyabu **
Renée Marron Klepesch
Nancy Harrow Krukowski *
Joan Pauley Lamb
Nola Spiero Langner
Virginia Wilson Laplante
Barbara Gail Lazarus
Dorothea Harding Lobsenz
Priscilla Raymond Lull
Jane Lees Lynch
Barbara Overlock Mahler
Judith Erdmann Makrianes
Martha Hornblower McCarthy
Joan Olmsted Oates
Barbara Carpenter Masek
Linda Borden McKean
Phyllis Jones Menefee

Georgabell Henley Moffat
Marjorie Wood Murray
Candace de Vries Olesen
Nina Pattison
Judith Van Orden Peacock
Barbara Connally Pijoan
Deborah Ritter *
Gail Greig Schlegel **
Marianne Byk Schnell
Judith Seaver Shea *
Sally Liberman Smith
Joan Borden Stuart *
Ruth Lyford Sussler **
Martha Woodcock Sutton
Wendelyn Keate Voelzow
Jane Walker Warren
Joanne McCallum Wasley
Petrie Manning Wilson
Albert Pessó
Diane Boyden Pessó
Rona Davis Pollack **
Louise Loening Reiver
Nanette Offray Rich
Anne Cohen Robinowitz
Rhoda Turteltaub Rosenthal **
Marilyn Bernstein Seide
Martia Reed Smith *
Sydney Brucker Sowles **
Carol Haffner Strauss
Mary Dempsey Vos
Sue Rayner Warburg
Elizabeth Newman Ward
Sophie Ruderman Weber **
Anne Topping Weed
Joan Maggin Weiner

1953

Class Agent:
Maureen Mahoney Murphy
(Mrs. Stephen Murphy)
21 Manor Drive
Milford, CT 06460

Total Annual: \$4,018.75
Total Capital: \$2,375.00

Class participation:
28.3% Annual
7.1% Capital

Renee Deyoe Ayers
Susan Liebman Bendheim *
Jenniifer Mertens Brock
Gae Maloney Brown
Suzanne Kennedy Brown
Frances Smith Cohen
Elisabeth Delatour Costikyan
Solveig Peterson Cox **
Ruth Miller Curwen
Virginia deRochemont
Lucretia McPherson Durrett
Martha Dow Fehsenfeld
Ruth Maslow Fischer
Sylvia Wilson Fouser
Barbara Fritz
Dorothy Whittier Grillo
Anne Wasson Harney
Nancy Price Hiestand
Lorraine Nichols Higbie
Elizabeth Larsen Lauer *
Sheila Stires Lloyd **
Barbara Pavell Loden
Ann Guttmacher Loeb
Pauline Thayer Maguire
Nancy Miller Mahoney *
June Wineburgh Mattingly
Susannah Means *
Annette Cottrell Merle-Smith
Maureen Mahoney Murphy
Janet Gay Newman
Carolyn Lissner Ottley
Louise Ganter Taylor
Barbara Schwanda Weedon **
Drusalina Romano Weild *
Helen Shapiro Willoughby
Fay Sigel Witz

1954

Class Agent:
Barbara Elliott Ingraham
(Mrs. William Ingraham)
RFD #2 Hilltop Road
Oyster Bay, NY 11771

Total Annual: \$17,011.25
Total Capital: \$750.00

Class participation:
37.9% Annual
5.7% Capital

Joseph Ablow
Roselyn Karol Ablow
Brett Ginnings Bell
Susan Schapiro Brody *
Nancy Smith Casner
Claire Radoslovich Clark
Judith Beach Damon **
Neisa King DeWitt
Joan Gale *
Ruth Liebling Goldstone
Judith Rosenberg Hoffberger
Leonard Hokanson
Barbara Elliott Ingraham
Emily Mason Kahn
Joan Kearns

Frances Springer-Miller Kraus
Susan Powers Lagunoff **
Stephanie Taubman Low
Hope Mason
Sue Friedman McGowen
Helene Fox Metzberg
Joanne Gunst Moyer
Abigail Oleson Newburger
Joan Holt Oates *
Sarah Holt Parsly
Barbara Nelson Pavan
Nancy Lawrence Riegel
Marjorie DeWitt Rose
Ellen Weinstein Sands
Joel Wells Schreck
Charlene Solow Schwartz
Jane Watt Shapard
Anne Johnson Sharpe
Carole Press Stavenhagen
Lynn Staley Sternik
Rasma Kleitnieks Veselis

1955

Class Agent:
Helene Rattner Pesin
(Ms. Helene Pesin)
5 75th Street
North Bergen, NJ 07047

Total Annual: \$5,362.00
Total Capital: \$3,725.00

Class participation:
27.2% Annual
7.6% Capital

Elizabeth Green Appleton
Sheila Gallagher Arnaboldi
Martha Haskell Baird
Sibyl Totah Belmont
Helen Burgin Buttrick
Nancy Wharton Duryea
Josephine Brown Emery
Judith Backer Grunberg
Lisa Landon Hewett
Vija Peterson Johnson **
Dorothea Booth Katz
Miriam Hermanos Knapp **
Elizabeth Lester *
Joan Morris Manning **
Lionel Nowak
Helene Rattner Pesin **
Linda Schandler Porter
Mary Vallas Posner
Mancia Schwartz Propp
Toby Carr Rafelson
Ellen Weber Rosen *
Faith Bancroft Schrader **
Barbara Goldman Schulman
Stella Spanoudaki Sichel
Ruth Haniman Taran
Margot Hartman Tenney
Susan Humbert Zuch

1956

Class Agent:
Kay Crawford Murray
(Mrs. Archibald Murray)
100 LaSalle Street
New York, NY 10027

Total Annual: \$5,055.00
Total Capital: \$923.33

Class participation:
35.2% Annual
6.7% Capital

Susan Gurian Ackiron
Denise Rzewski Bredt
Adelaide Phillips Bull
Lois Schulman Chazen
Joan Simons Constantikes **
Alma Sachs Daniel
Jean Segal Fain
Joan Rice Franklin
Ilene Greenwald Friedman
Carol Weston Galloway
Evanne Schreiber Geltzeiler
Ellen MacVeagh Gilbert **
Jane Martin Ginsburg
Sheila Solomon Hadley
Ruth Ring Harvie
Margradel Lesch Hicks
Carrie McLeod Howson
Carol Friedman Kardon
Phyllis Lipton Krasnow
Anna Carbone Lautore **
Gretchen Lindblad Mamis
Louise Valentine McCoy
Uli Beigel Monaco
Kay Crawford Murray
Anstiss Chassell Nadler
Riva Magaril Poor
Audrey Rosenthal Reichblum
Sally Mansfield Romig
Elisa Starr Rudd
Mary Lou Peters Schram **
Margery Baer Schwartz **
Suzanne Stern Shepherd *
Elaine Gordon Silets
Dale Lester Sokolow
Josephine Hamlin Stead
Bonnie Miller Stein *
Cynthia Sheldon Stibolt
Renee Patenaude Turolla

*Capital giving only.

**Capital and Annual giving.

Jane Albright Vipond
Arline Israel Weishar

1957

Class Agent:
Evelyn Stein Benjamin
(Mrs. George Benjamin)
1088 Park Avenue, Apt. 14C
New York, NY 10028

Total Annual: \$4,973.46
Total Capital: \$2,650.00

Class participation:
30.5% Annual
10.5% Capital

Myrna Janoff Baldinger *
Helen Isaacs Barer **
Bette Shaler Barnes
Marya Bednerik
Evelyn Stein Benjamin **
Stephanie Brown Carleton
Louise Carly Cavanaugh **
Darcy Lay Doyle *
Edith Keen Farley
Lucy Grier Feller
Marion Fisher
Cristol Schwarz Fleming
Barbara Kelly Glovich
Eleanor Kronish Goldstein *
Phyllis Elkind Goldstein
Constance Golub Gorfinkle *
Mary Ann Vermeulen Haddad
Priscilla Loening Hanford **
Hadassah Houtz Hoffman
Helen Allentuck Horowitz *
Marcia Sang Isaacs**
Elaine Silverman Lewis
Mary Louise Earthrowl Lewis
Deborah Miller
Roberta Selwyn Miller
Patricia Fairbanks Moller
Elaine Liberstein Pitt
Natalie Feiler Podell
Louisa Perkins Porter
Judith Levine Rubin
Suzanne Elstein Scheinman
Dorothy Franks Sellers
Laura Kesselman Skoler
Anne Cremer Smith *
Joan Rosenthal Sovern
Alida Vander Hoeven Van Horn
Madalene Olander Woodbury
Winston Case Wright
Lynn Sakowitz Wyatt

1958

Class Agent:
Joy Carpenter Chadwick
(Mrs. Benjamin B. Chadwick)
26 Horseshoe Road
Chelmsford, MA 01824

Total Annual: \$6,052.00
Total Capital: \$475.00

Class participation:
29.9% Annual
1.9% Capital

Jane Eisner Bram
Frieda Rowell Carnell
Darla Stimpson Chafin
Susan Ullman Chapro
Harriet Clifford
Elinor Stockheim Davidson
Patricia Falk
Marjorie Rubin Freeman
Annette Hidary Goldman
Ruth Berman Greer
Rosemarie Yellen Heyer
Judith Outerbridge Hughes
Tordis Ilg Isselhardt
Sheila Hirschfeld Jacobs **
Marlene Mintz Kandel
Marilyn Kropf Kurtz
Anne Fulton Magai
Judith Jacobson McGee
Cornelia Ward Makepeace **
Patricia Sullivan Meyers
Marianne Petrie Miller
Jennifer Seward Montgomery
Barbara Israel Nowak **
Margaret Beckwith Parsons
Grace Schwartz Sevy
Treva Silverman
Donna Schacter Sinanian
Frema Sindell Solomon
Rhoda Chaprack Treitler
Katharine Kirkham Turner
Rosamond Tudor Vanderlinde
Jane Connelly Whiting

1959

Class Agent:
Jane Vanderploeg Deckoff
(Mrs. Jane Deckoff)
1060 Park Avenue
New York, NY 10028

Total Annual: \$2,129.00
Total Capital: \$1,790.00

Class participation:
37.1% Annual
10.5% Capital

Marcia Margulies Abramson
Harriet Turteltaub Abroms
Valerie Reichman Aspinwall
Jessica Falikman Attiyeh
Rona King Bank
Elisabeth Posselt Barker
Alison Wilson Bow
Rebecca Stout Bradbury **
Rosalie Posner Brinton
June Allan Carter
Barrie Rabinowitz Cassileth
Katharine Durant Cobey *
Ellen Count
Jane Vanderploeg Deckoff **
Elizabeth Partridge Durant
Amy Sweedler Friedlander
Joan Trooboff Geetter *
Phyllis Saretsky Gitlin
Helen Trubek Glenn
Carol Grossman Gollob **
Mary Lynn Hanley **
Barbara Hanson
Judith Silverman Herschman
Joan Allan Horrocks
Wilda Darby Hulse *
Sandra Siegel Kaplan **
Ilka Hewitt Kerr
Jennifer Rains Lenz
Dianne Meeker Leonardi
Jane Hough Leoncavallo *
Sonia Berlin Michelson **
Barbara Dain Nemiroff
Jenny Polson Ono
Emily Carota Orne
Justine Riskind
Marjorie Godlin Roemer
Ann Little Rubenstein
Sandra Uhle Sawin
Judith Snyder Schaeffer
Maxine Lapides Schwartz
Carol Foley Surkin **
Daisy Sharples Sweet *
Tama Alcott Taub
Ilsa Klotzman Wolfe
Joanne Bramel Young
Janet Marcus Zuckerman **

1960

Class Agent:
Virginia Weed Smith
(Mrs. William H. Smith)
Golf Course Road
Washington, CT 06793

Total Annual: \$10,330.00
Total Capital: \$4,407.00

Class participation:
29.5% Annual
9.8% Capital

Laurie Vance Adams
Judith Barsky-Lieberman
Linda Mazer Berkowitz
Frances Finesilver Blumenthal
Susan Sims Bodenstein
June King Camerer **
Judith Albert Croner
Mary Humes Crowe **
Hava Kane Dunn
Frances Grossman Fitzgerald *
Ruth Ann Fredenthal
Beverley Mountain Galban *
Joy Goldsmith *
Pamela Abel Hill *
Berte Schindelheim Hirschfield
Damaris Smith Horan
Franka Culberg Jones
Ann Maslow Kaplan
Julie Lapidino *
Amy Miller Levine
Patricia Kahn Light
Jane Lipman
Martha Terrell McCall
Alice Miller
Stephanie Hartshorn Miller
Susan Rosenbaum Nobel
Harriet Bougen Oliver
Rochelle Sholder Papernik
Lucienne Davidson Penn
Phyllis Baron Plattner *
Gloria Dibble Pond **
Elizabeth Ann Poppen
Patsy Rogers
Virginia Alcott Sadock
Miriam Schwartz Salkind
Patricia Allaben Sherman
Virginia Weed Smith *
Iris Basche Stern
Harriet Fitts Szanto *
Beverly May Vail
Marian Zazeela **

1961

Class Agent:
Patricia Groner Dubin
(Ms. Pat Dubin)
4043 North 20th Road
Arlington, VA 22207

Total Annual: \$3,143.00
Total Capital: \$1,510.00

Class participation:
30.5% Annual
9.5% Capital

Anna Bartow Baker *
Kaye Donoho Benton
Judith Schneider Bond
Susan Burack **
Susan Mason Callegari
Nancy Markey Chase **
Shannon Theobald Devoe
Patricia Groner Dubin
Dorothy Tulenko Feher **
Uliana Fischbein Gabara
Gail Cherne Gambino **
Julie Eiseman Ginsburg
Meryl Whitman Green
Rae Hanewald Harsch *
Susan Loomis Herrmann
Katharine Margeson Ingram
Sylvia Conway Jerace
Julie Cavanagh Kaneta**
Barbara Kapp
Margaret Katz Kaufman
Nina Koch
Nicole Reinhold Martin *
Harriet Epstein Matthews
Cynthia Taylor Nash
Gretel Hoffman Pelto
Gail Rodier Schonbeck *
Harriet Zarling Schuman
Lucy Sloan
Lynn Goldberg Small
Monica Wulff Steinert
Mariel Stephenson
Marjorie Daniel VanName
Karen Egeberg Warmer
Margot Adler Welch **
Carolyn Green Wilbur
Sandra Albinson Zapinski

1962

Class Agent:
Barbara Marcus Sprafkin
(Mrs. Robert Sprafkin)
941 Comstock Avenue
Syracuse, NY 13210

Total Annual: \$1,646.00
Total Capital: \$6,077.00

Class participation:
21.6% Annual
5.2% Capital

Saida Heyman Baxt *
Rosalind Moger Bernheimer
Lisa Hartmann Blake
Thelma Bullock
Jane Burkhardt *
Donato Capozzoli
Helen Croll Chinitz
Emily Crandall
Jennifer Cushing Curtis
Barbara Fink Enzer
Joan Borkum Epstein
Andrea Kanner Halbfinger
Jane Harriman
Karen Collier Hegener
Sally Bowers Henry
Patricia Johanson *
Susan Weiss Katz
Bridget Beattie McCarthy
Jane Vance McCauley
Dorothy Willett Oliver *
Katherine Schwartz Shawn
Sandra Kesselman Slotnik **
Ellen Jacobowitz Stein
Nancy Janover Victor

1963

Class Agent:
Jeane Pavelle Garment
(Mrs. John S. Garment)
9 Murchison Place
White Plains, NY 10605

Total Annual: \$1,271.00
Total Capital: \$655.00

Class participation:
18.9% Annual
3.6% Capital

Betty Aberlin
Elinor Bacon
Janine Beichman
Joann Bromberg-Ross
Patricia Bergson Commoss
Judith Selis Davidson **
Sandra Meissner Drescher
Betsey Dingman Eidinoff
Jeane Pavelle Garment
Deborah Hayes Gillette
Adrienne Jaffe Goldman
Jane Witty Gould
Sandy Perlmutter Greer
Linda Appleman Guidall-Shapiro
Arlene Heyman *
Constance Holden *
Sally Wolter Kirouac

Marianne Stafne Meyer
Ann Popple Muller *
Natalie Pascoe
Jill Schutz Pinkwater
Barbara Goldberg Rohdie
Alice Adler Segal
Susan Appleman Unterberg

1964

Class Agent:
Barbara Alrich Wichura
(Mrs. Michael J. Wichura)
5450 East View Park
Chicago, IL 60615

Total Annual: \$953.00
Total Capital: \$1,670.00

Class participation:
22.4% Annual
10.3% Capital

Pat Cronin Adams *
Sarah Scattergood Ashe *
Babette Amberger Brackett *
Virginia Howard Brecher
Ann Lane Breit
Alexandra Broches Calabro *
Ellen Carter Delbanco **
Edith Keppel Drury
Betsy Feist
Julie Rogers Gittins **
Julia Turner Glass *
Vivian Bachrach Glick **
Janet Gohres
Marjorie Goldstone Greenberg
Barbara Brannon Heath *
Diana Chace Hoyt
Jane Owen Jarvis
Faith Kaltenbach
Kaye Grossman Matthews
Alexandra Herter Mead
Ann Harvey Mendershausen
Gael Rockwell Minton
Jean Morgan Reed
Erna Crown Reingold
Carole Hedlund Seigel
Nina Pelikan Straus
Pamela Strauss Sullivan *
Holland Taylor **
Elizabeth Baum Williams
Karen Jackel Wunsch
Barbara Jacobson Zimmerman

1965

Class Agent:
Elizabeth Underwood Bertrand
(Mrs. Gordon A. Bertrand)
43 Union Park
Boston, MA 02118

Total Annual: \$4,765.00
Total Capital: \$2,377.00

Class participation:
23.3% Annual
5.8% Capital

Isabella Holden Bates
Elizabeth Underwood Bertrand
Deborah Rubin Bluestein
Renée Engel Bowen *
Mary Okie Brown
Jan Tupper Cogley
Susan Hadary Cohen
Susan Crile
Inez Ingle **
Elizabeth Hollowell Judson
Lorna Katz *
Wendy Slote Kleinbaum
Anne Boyd Kraig
Caryn Levy Magid
Janet Warner Montgomery
Roberta Ross Moore
Carol Munter
Barbara Nachmias-Kedesdy
Nancy Newton
June Caudle Payne *
Katrina Edwards Pelkey
Marjorie Perloff
Margaret Donald Snider *
Lynne Tishman Speyer *
Susan St. John-Rheault
Maria Taranto
Barbara Lawrence Train **
Alice Ruby Travis
Carolyn Sprogell Vandenberg
Geraldine Rapf VanDusen

1966

Class Agent:
Ms. Susan Slovak
193 Sterling Place
Brooklyn, NY 11238

Total Annual: \$1,545.00
Total Capital: \$1,971.00

Class participation:
19.4% Annual
4.6% Capital

Sara Spadea Black
Sally Bowie

Elizabeth Cutler
Lisa Taylor Emerson
Debra Kram Fisher *
Thea Comins Froling
Jean McMahon Humez
Nan Foster Kilbourn
Gilian Kneubuhl
Olivia Koppell
Nancy Lloyd
Eileen Thaler Lordahl
Cynthia Cole Mairs
Adrienne Franklin Parker
Judith Dunlop Ransmeier *
Susanne Snyder Rappaport **
Jane Robinson-Tabony
Martha Rockwell
Glynn Rudich
Barbara Matthews Spar
Joyce Spector
Heidi Jost Von Bergen *
Constance Wallace **
Elizabeth Richter Zimmer

1967

Class Agent:
Ms. Joyce Keener
2090 East Mountain Street
Pasadena, CA 91104

Total Annual: \$1,374.00
Total Capital: \$2,456.00

Class participation:
29.1% Annual
13.6% Capital

Pamela Acheson *
Leslie Gieseke Bose
Sally Levin Brotman
Danielle Demers
Sally Donaldson *
Diana Forbes Droste
Gretel Ehrlich
Dori Pavelle Feiszli *
Marilyn Sibley Fries
Deborah Clements Gessner
Ellen Glick *
Tracy Harris **
Adria Heyman Hillman *
Amy Dolgin Jaffe **
Joyce Keener
Constance Kheel
Michele Schurgin Lachman
Sheila Kiley Largay
Margaret Rood Lenzner **
Deborah Langman Lesser *
Mary Tolbert Matheny *
Sharon Johanson McCullough
Beverly Mikuriya *
Marcia Miller
Elizabeth Clark Nigro
Letitia Peplau
Barbara Davenport Rosof *
Polly Notkins Rubin
Bambi Bernhard Schieffelin
Eugenie Bird Shields **
Kathleen Haynes Shorr
Elizabeth Bradford Singh
Laurie Kohn Steele
Susuan Mintz Super
Susan Mauss Tunick
Beverly Rantoul Turman *
Martine Cherau Walker
Londa Weisman
Vivian Ryan Wells
Lois Lichtenstein Wilkins

1968

Class Agent:
Frances Wells Burck
(Mrs. Charles G. Burck)
26 E. 2nd Street
New York, NY 10003

Total Annual: \$1,643.00
Total Capital: \$390.00

Class participation:
23.5% Annual
3.9% Capital

Barbara Lazear Ascher
Jay Brady
Deborah Brown
Gillian Cockburn Burch
Patricia Burrows
Barbara Kaufman Butler
Harriet Bing Gavin
Peggy Kohn Glass
Martha Armstrong Gray
Rhoda Holtzman Halperin
Maria Huffman
Susan Jehle Johnson
Ernest Kirby
Lydia Allen Kitfield
Leslie Sliker LaRocca
Carol Levin
Barbara Manners
Karen Manulis **
Melody Sternoff Meyers
Jennifer Rochow *
Gale Thompson Synnott
Marie McKenney Tavernini **

*Capital giving only.
**Capital and Annual giving.

Lindley Greenough Thomasset
Harriet Moger Watson
Barbara Fisher Williamson **

1969

Class Agent:
Ms. Sarah Magee
436 E. 9th Street
New York, NY 10009

Total Annual: \$8,158.06
Total Capital: \$2,078.00

Class participation:
25.9% Annual
8.9% Capital

Kathleen Fisk Ames **
Verna Rakofsky Blair
Susan Paris Borden
Caroline Cochran Boynton
Laurie Eliscu Calahan
Alice Purnell Cannon **
Sherry Stodola Clarke
Virginia Creighton **
Mary Crowe
Barbara Rudnick Glass
Christine Graham **
Barbara Ross Greenberg *
Gwynneth Howell Greenberg
Elizabeth Johnson Grieder **
Daryl Hartshorne
Maren Jenkins Hassinger
Rachel Kahn-Fogel
Jane Kaufman **
Susan Phillis Kucsma *
Sarah Magee
Margaret McCain
Ellen McCulloch-Lovell
Robin Newhouse
Kathleen Norris
Wendy Perron **
Diana Elzey Pinover
Jane Platt **
Beverly Freemountain Red **
Pauline Adoue Scanlon
Doreen Seidler-Feller
Starr Siegele
Marsha Flum Taylor

1970

Class Agent:
Jane Larkin Crain
(Mrs. John P. Crain)
1964 Oak Street
South Pasadena, CA 91030

Total Annual: \$725.00
Total Capital: \$465.00

Class participation:
17.9% Annual
6% Capital

Valerie Arning
Mary Bresnan
Jane Larkin Crain *
Patricia Crain
Victoria English
Claudia Packer Feurey
Louisa Putnam Finnegan
Jill Goodman
Pamela Granbery
Lavinia Hall
Michael Kalinowski
Vanessa Beer Korn
Linda Lawton **
Ramie Limber
Mady Marantz *
Rebecca Mitchell
Sally Dodge Mole
Ellen Pollak *
Emily Israel Raphael **
Gail Rothman
Kathleen Smith
Deborah Thomas
Janet Tice **
Hilary Apjohn Trigaux *
Cristina Guiu Wood

1971

Class Agent:
Ms. Nancy Glimm
22 Chatham Street
Cambridge, MA 02139

Total Annual: \$1,498.54
Total Capital: \$780.00

Class participation:
18.4% Annual
5% Capital

Ruth Arnold
Patricia Barr **
Jane Carlstrom *
John Cauman
Constance Frontis
Michele Geller
Ann Goldstein
Kathy Halbreich *
Philip Holland
Lee Jamison Larson
Susan Miller

Julie Noble
Jill Nooney
Ann Rose Podlipny
Ann Price
Joanne Beskind Rivkin *
Victoria Woolner Samuels
Catherine Satterlee
Jane Marcus Sobel
Martha Harvi Soehring
Tina Staller
Sarah Tenney
Thomas Turkington
Martha Von Blon *
Clare Weinraub Waite **
Mary Welch
Tamsin Willard
Joan Harris Wiseman
Susan Wolbarst
Doris Dronski Zelinsky **

1972

Class Agent:
Mr. Samuel Schulman
278 Allandale Road
Chestnut Hill, MA 02167

Total Annual: \$1,703.00
Total Capital: \$555.00

Class participation:
25.8% Annual
3.9% Capital

Maryann Apicella
David Appel
Steven Ashe
Elizabeth Ayer *
Joan Balter
Mary Barringer
Arthur Becker
James Bloom
Starlina Peyson Bradbury
Margaret Brett
Ellen Burt
Mary Chiasson *
Barbara Chvany
Ferris Cook
Victoria Cowles
Jeannie Cross *
Caroline Darby
Sharon Couch DeBonis
Randall Denker
Diane Dickstein
Joan Fitzgerald
Susan Goldberg
Ellen Gundaker
Caleen-Sinnette Jennings
Joanne Johnson
Harvee Briggs Johnson
Caroline Sheridan Loose
Carole Jameson Mann
Victoria Monks
Erik Nielsen **
Karen Oram
Sharon Ott
Patricia Owen
Caren Pert Pearson
Carol Portney
Kathleen Pottick
Alexandra Reed
Charlotte Albright Renner
Jeannie Day Roggio
Karen Rubinstein **
Martha Scheiner
Karen Sorg Schlenker **
Samuel Schulman *
Pamela Shaw
Jullie Ferris Sillin
Pamela Skewes-Cox
Melissa Stewart
Kimball Wheeler Suits
Elissa Weitz
Amy Yasuna
Joan Zucker

1973

Class Agent:
Ms. Susan Dangel Geismer
17 Prince Street
West Newton, MA 02165

Total Annual: \$2,375.00
Total Capital: \$17,011.00

Class participation:
16.6% Annual
2.3% Capital

Yasmin Aga Khan **
Valerie Anton
Peter Barnet *
Ellen Benson
Wendy Blair
Alex Brown
Deborah Morse Bruskin *
Sigrid Burton
Michael Bushnell
Thomas Cartelli
Annabel Chotzen
Elizabeth Craft
Frances Crozier
Cathy de Moll
Lisa Dorsey
Jennie Brian Duke

Richard Fishman
Elise Weinrich Geary
Susan Dangel Geismer
Ellen Aboya Gilligan
Martha Hadley
Laura Cook Himes
Jessica Hirschhorn
Alexandra Hughes *
Henrietta Buschman Jordan
Susan Gordon Kaplan
Allen Kennedy
Jane Kornbluth
Donna Light
Edward Mooney
Laura Geiser Perloff
Barbara Pullman
Peta Raabe
Phyllis Reisberg
Richard Rotman
Cynthia Saltzman
Jennifer Shakespeare
Anna Shapiro
Henry Siegel *
Elizabeth Swados
Doris Ginsberg Traub

1974

Class Agent:
Ms. Catherine Askow
400 West Deming Place
Chicago, IL 60614

Total Annual: \$1,203.33
Total Capital: \$960.00

Class participation:
13.5% Annual
6.2% Capital

Doris Andrews
Catherine Askow
Lori Barnet
Tina Takayanagi Barnet *
Miles Belgrade *
Susan Cantrick
Mary Caspari
Douglas Cumming **
Cyr Van Gorder Daniel
Mark Edmundson
Ellen Ferber
Deborah Gluckman
Charlotte Hanna *
Clarke Jordan
Phillips Keller *
Jeremy Koch *
Alan Kornberg **
Charles Lyon
Robina Magee
Charlotte Melin
Rachel Michaud
Margaret Newman
Hannah Gregory Pemberton
Polly Puner *
Eric Richter *
Sarah Rodman-Sterling
Penelope Roeder *
Mary Runyon
Peggy Schiffer
Andrew Schloss **
Susan Still
Daphne Smith Stone **
Catherine Wheeler
Terry Wohl

1975

Class Agent:
Elizabeth Meyer
300 Islington Road
Auburndale, MA 02166

Total Annual: \$1,083.50
Total Capital: \$1,000.00

Class participation:
9.6% Annual
.5% Capital

Pernel Berkeley
Sheldon Brown
Francie Camper
Judy Fialkow
Elizabeth Galt
David Garelick
Anne Henry
Cathy Wilkie Kossey
Ralph Mack
Mitch Markowitz
Megan Marshall
Tom Melvin
Elizabeth Meyer *
Jeremy Peterson
Susanna Reich
Jill Riley
Susan Feldman Rotman
Nina Shuman
Ann Spanel
Jeanne Steiner

1976

Class Agent:
Mr. Alan C. Feuer
28390 Lockdale #309
Southfield, MI 48034

Total Annual: \$1,102.50
Total Capital: \$180.00

Class participation:
9% Annual
1.4% Capital

Robin Brickman **
Mary Cleaver
Charles Collins
Michael Connolly
Christine Contreras
Linda Davidson
Zachary Feuer
Joan Glass
Debra Greenblatt *
Ruth Griggs **
Sheila Kerrigan
Lisa Lillard-Caldwell
Carol Magenau
Nancy Halverson Melvin
Charles Morgan
John Perkins
Amelia Rogers
Amelia Sawelson
Stephen Smith
Elizabeth Willoughby

1977

Class Agent:
Ms. Elisse Ghitelman
5485 South Drexel
Chicago, IL 60615

Total Annual: \$1,352.00
Total Capital: \$350.00

Class participation:
9.4% Annual
3.1% Capital

Karen DeRosa Boardman
Leslie Bernstein Boguch
Steven Brettler
Robert Candon
George Coyne
Ronald Dabney
Margot Dockrell
Michael Falk
Laurie Frankel
Virginia Gamage
Janice Geller
Elisse Ghitelman *
Jane Gil
Gina Heiserman *
Phyllis Kaplan
Jacqueline Kennedy
Michael Kraft
Susan McGrath *
Stephen Pratt
Carol Rowan
Sally Sandberg *
Heidi Schmidt *
John Sheldon *
Nicholas Stephens **
Paul Underwood
Esme Usdan
Mary Ellen Watkin
Jill Wisoff

1978

Class Agent:
Ms. Cynthia Browning
1457 Wisteria Drive
Ann Arbor, MI 48104

Total Annual: \$398.00
Total Capital: \$10.00

Class participation:
7.6% Annual
.4% Capital

Barbara Barnes
Claude Brachfeld
Peter Clark
John Diebboll
Sharon Elliott Fuller
Bennett Greene
Jan Hadwen
Elizabeth Updike Judson
Amy Kessler
Susan Land
Michael Nathan
Cortland Neuhoff
Anne Perkins
Margaret Pratt
Suzanne Robinson
Lisa Scheer **
Elizabeth Schutz
Karen Solstad

1979

Class Agent:
Mr. Randall Witlicki
27 Castle Road
Forrestville, CT 06010

Total Annual: \$40,207.21
Total Capital: \$55.00

Class participation:
6.8% Annual
1% Capital

Dion Birney
Cate Noyes Boddington
Linda Bouchard
Eileen Bradley
Cynthia Browning
Robert Burman
Daniel Cameron
Debra Engler
Marian Johnson
Beth Kanter
Mark Lyon
Cheryl Ann Meyer
Mary Anne Sgarlat *
Amy Spound **
1 Anonymous Gift

1980

Class Agent:
Ms. Catherine Hays
315 W. 98th Street - Apt. 1C
New York, NY 10025

Total Annual: \$665.00

Class participation:
9.6% Annual

Martha Ackerman
Catherine Alexander
Paula Clements
Judith Desaritz
Ashley Eichrodt
Kevin Farley
Deborah Franks
Frances Kafka
Jamie Knapp
Maureen Matthews
Stefanie Newman
Julie Ostwald
Alison Rasch
Samuel Rosenberg
Lynn Silverstein
Holly Appel Silverthorne
Anne Soorikian
Mary Ellen Stringos
Julie Tessler
Orren Weisberg
Lisa Wu

1981

Class Agent:
Ms. Lynn Hicks
Box 318, Frybranch Road
Lynnville, TN 38472

Total Annual: \$5,452.00

Class participation:
13.3% Annual

Paul Berkowitz
John Bertles
Colette Bouchard
Edward Buller
Alexander Campbell
Donna Catanzaro
Amanda Degener
Susanna Dent
Deborah Finn
Donzia Franklin
Susan Grossman
Brooke Hadwen
Lynn Hicks
Yew Wah Ho
Donna Jordan
Sarah Kahn
Laurie Katz
Ken Maher
Diana Mason
Maryann Mazzacaro
Lucy Merrill
Michelle Murrain
Margaret Newburger
Betsy Rathbun
John Scheuer
Laura Shelton
Leslie Weber
Elizabeth Yoffe

1982

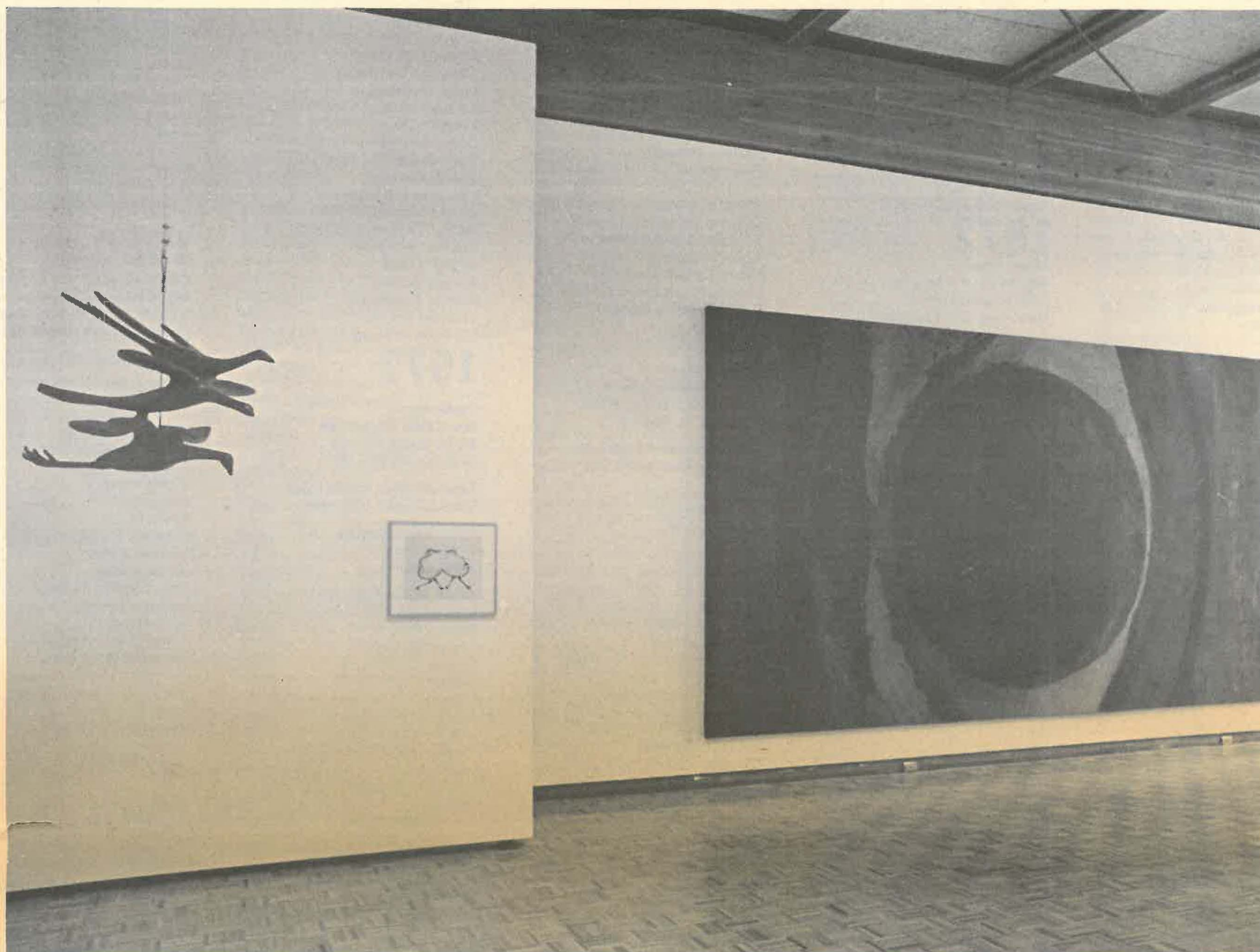
Class Agent:
Mr. Donald N. Schatz
156 Waterville Road
Avon, CT 06001

Total Annual: \$106.00

Trevor Anonsen
Andrea Berleant
Katherine Campbell
William Farrell
Susan Fineman
Caren Glatt
Cynthia Kravitz
Donald Schatz
Laura Nell Smith
Karen Sontag
Amy Toms
James White

*Capital giving only.

**Capital and Annual giving.



Alexander Liberman's "Big Blue Circle," 1963 (Liquitex on canvas, 48 by 108 inches) dominates one wall of the gallery, along with a sculpture of flying birds by Mary Callery.

Annual Fund Growth: the statistics

YEAR END REPORT JUNE 30, 1982

ANNUAL CATEGORY	1981-82		1980-81		1979-80		1978-79	
Alumni	1,731	\$521,566.46	2,233	\$293,512.67	1,845	\$233,560.48	1,859	\$161,999.65
Friends of the College	112	79,446.00	98	75,426.69	67	31,066.10	94	42,854.29
Parents	361	57,683.50	321	49,132.44	519	55,679.60	219	24,866.30
Foundations	10	92,849.72	13	106,123.52	9	68,149.15	9	54,199.21
Corporations	5	4,000.00	4	3,800.00	5	7,830.00	8	8,205.00
Alumni Regional Program	2	7,125.51	1	15,742.36	4	8,973.60	4	6,566.79
Bequest	0	—0—	0	—0—	0	—0—	1	3,000.00
Totals	2,221	\$762,671.19	2,670	\$543,737.68	2,449	\$405,258.93	2,194	\$301,691.24
(Associates)	(123)	(\$562,205.30)	(109)	(\$310,688.90)	(103)	(\$227,650.43)	(84)	(\$134,501.88)
(Figures are included in the totals above.)								

The 50th Anniversary Celebration and Funds

CAPITAL CATEGORY	1981-82		1980-81		1979-80		1978-79	
Alumni	519	\$169,098.74	746	465,034.90	525	\$464,890.96	83	\$302,645.80
Friends of the College	23	298,732.21	38	45,260.70	143	114,066.23	42	203,915.55
Parents	9	5,820.00	5	3,650.00	12	18,962.50	9	18,810.00
Foundations	4	311,000.00	3	6,334.00	4	9,750.00	7	33,500.00
Corporations	4	4,717.00	5	22,000.00	5	34,750.00	0	—0—
Regional Program	1	560.00	0	—0—	0	—0—	2	12.00
Bequests	1	2,547.40	1	8,486.11	1	5,000.00	0	—0—
Totals	561	\$792,475.35	798	\$550,765.71	690	\$647,419.69	143	\$558,883.35