

THANKS

Costume Shop Staff
Donna Stephansky
Marta Stringham
Sasha Cuciniello
Ryan O'Connor
Jaimie Canavan
Shazia Rahim
Rivera Cook
Dana Reitz
Paul Opel

Janis Young

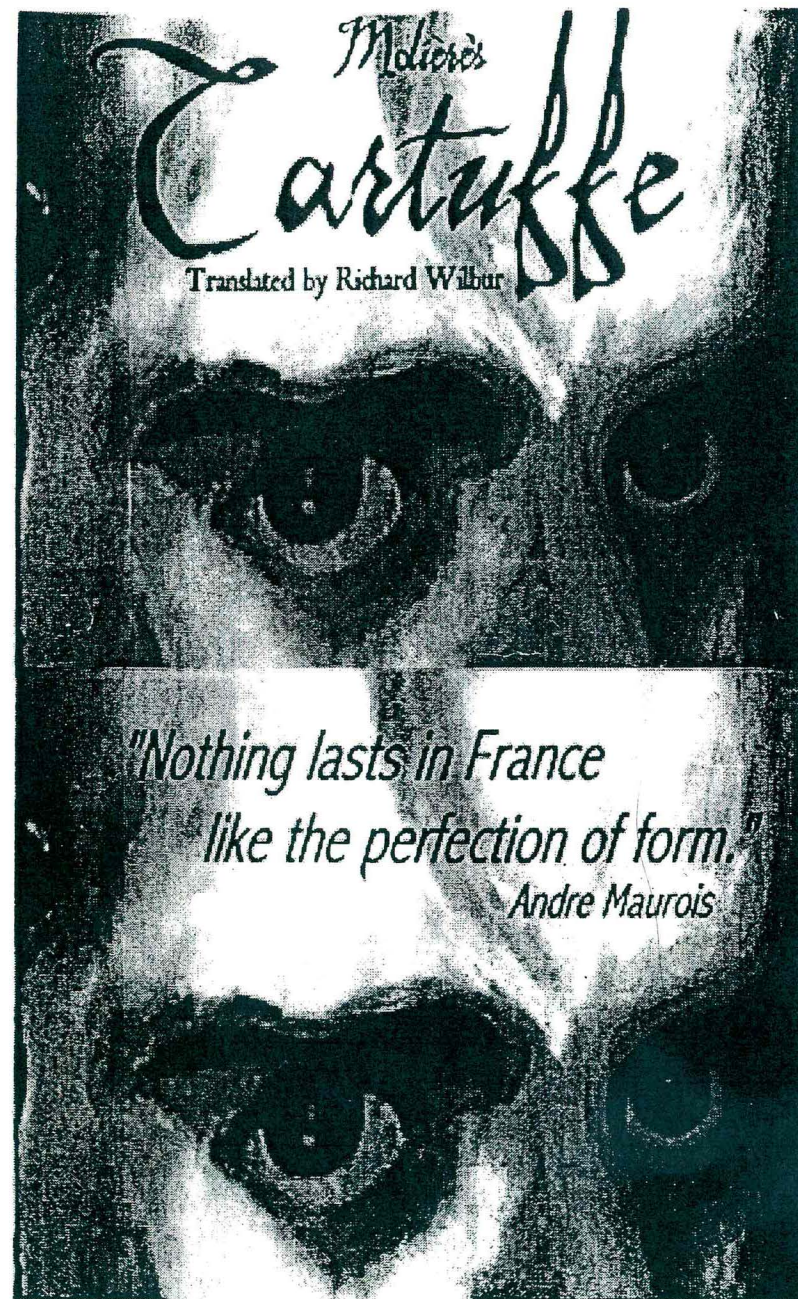
TDF Costume Collection
Joshua Chambers-Letson
The Left Bank Gallery
Michael Shamburg
Danny Michaelson
Donald Sherefkin
Terry Teittlebaum
Gokcen Ergene
Chris Zubryd
Vuk Mitevski

And to all whom in our great fatigue we have forgotten, we thank you too!

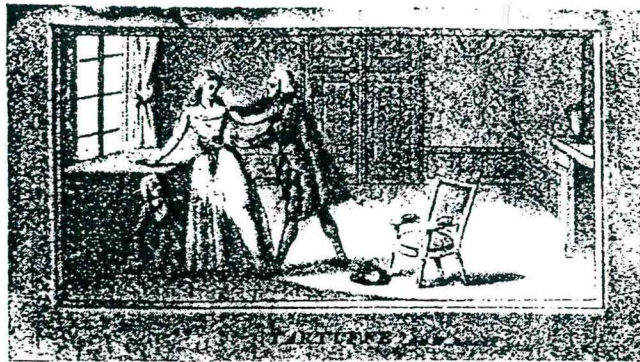


"There's a vast difference, so it seems to me,
Between true piety and hypocrisy:
How do you fail to see it, may I ask?
Is not a face quite different from a mask?

~Act I, Scene V



“Here is a comedy that has excited a good deal of discussion that has been under attack for a long time; and the persons who are mocked by it have made it plain that they are more powerful in France than all whom my plays have satirized up to this time. Noblemen, ladies of fashion, cuckolds, and doctors all kindly consented to their presentation, which they themselves seemed to enjoy along with everyone else; but hypocrites do not understand the banter: they became angry at once, and found it strange that I was bold enough to represent their actions and to care to describe the profession shared by so many good men. This is a crime for which they cannot forgive me, and they have taken up arms against my comedy in a terrible rage...



“If the function of comedy is to correct men’s vices, I do not see why any should be exempt. Such a condition in our society would be much more dangerous than the thing itself; and we have seen that the theatre is admirably suited to provide correction. The most forceful lines of a serious moral statement are usually less powerful than those of satire; and nothing will reform most men better than the depiction of their faults. It is a vigorous blow to vices to expose them to public laughter. Criticism is taken lightly, but men will not tolerate a satire. They are quite willing to be mean, but they never like to be ridiculed.”

~Preface to Molière’s *Tartuffe*

THANKS

Costume Shop Staff
Donna Stephansky
Marta Stringham
Sasha Cuciniello
Ryan O’Connor
Jaimie Canavan
Shazia Rahim
Rivera Cook
Dana Reitz
Paul Opel

Janis Young

TDF Costume Collection
Joshua Chambers-Letson
The Left Bank Gallery
Michael Shamburg
Danny Michaelson
Donald Shereffkin
Terry Teitlebaum
Gokcen Ergene
Chris Zubryd
Vuk Mitevski

And to all whom in our great fatigue we have forgotten, we thank you too!



“There’s a vast difference, so it seems to me,
Between true piety and hypocrisy:
How do you fail to see it, may I ask?
Is not a face quite different from a mask?

~Act I, Scene V

DIRECTOR
SET
COSTUMES
LIGHTS
SOUND
CHOREOGRAPHY
ASSISTANT DIRECTOR/DRAMATURG
TECHNICAL DIRECTOR
STAGE MANAGER
PORTRAIT OF TARTUFFE

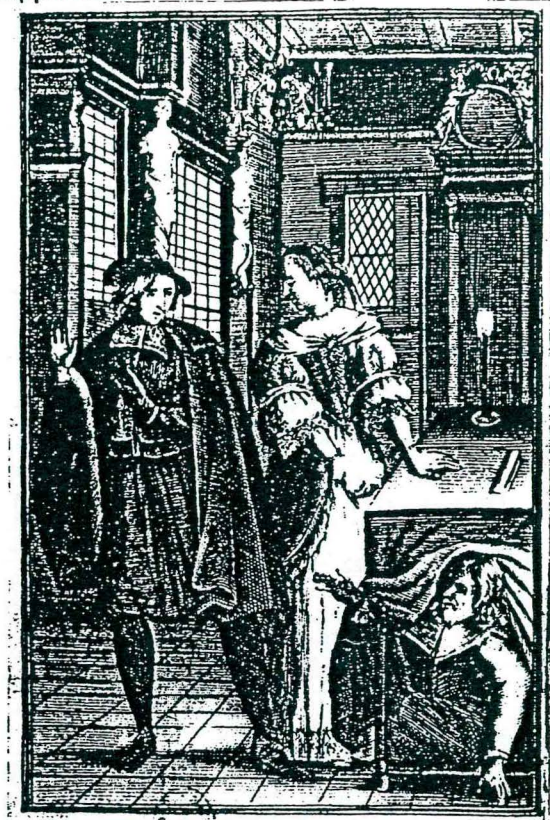
JEAN RANDICH
TRUI MALTEN
NATASHA HEINES
HEATHER HUTTON
TOM FARRELL
PEGGY FLORIN
MELIS BILGIN
ANDREW CANCELLIERI
TARO JOHNSON
SUMMER BRENNAN

CAST

Mme. Pernelle, <i>Orgon's mother</i>	Donna Stephansky
Orgon, <i>Elmire's husband</i>	Garth Silberstein
Elmire, <i>Orgon's wife</i>	Aadya Bedi
Damis, <i>Orgon's son, Elmire's stepson</i>	Tavo Carbone
Mariane, <i>Orgon's daughter, Elmire's stepdaughter</i>	Ann Vieira
Valère, <i>in love with Mariane</i>	Adam Sussman
Cléante, <i>Orgon's brother-in-law</i>	Kevin Casey
Tartuffe, <i>a hypocrite</i>	Rick Little
Laurent, <i>Tartuffe's servant</i>	Sarah Gancher
Dorine, <i>Mariane's lady's-maid</i>	Sasha Cucciniello
M. Loyal, <i>a bailiff</i>	K.J. Swanson
A Police Officer	Jasmine Hamedi
Flipote, <i>Mme. Pernelle's maid</i>	Gabrielle Weiler
Prince's Page	Dana Florin-Weiss

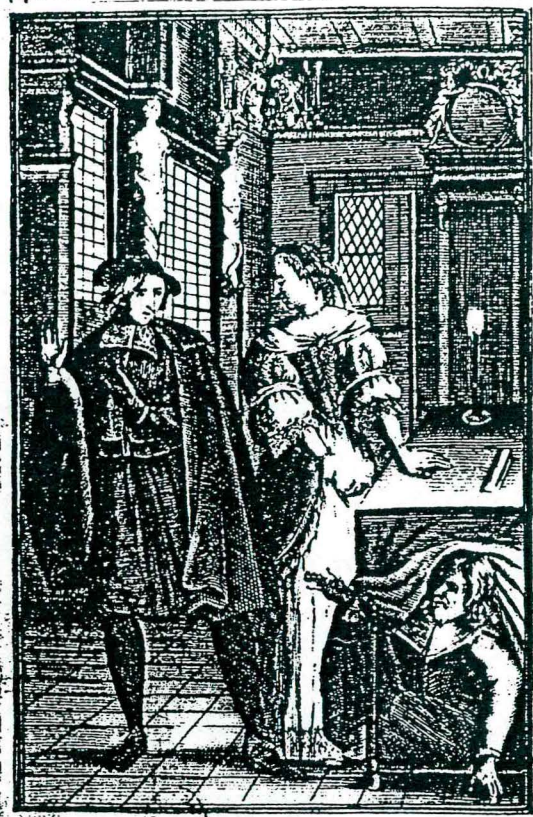
The scene throughout: Orgon's house in Paris

"...Comic drama elicits the utterance of what in most of us is buried, suppressed, unutterable..."



"...By such brilliant use of ironic language Molière was the liberator of his age. The practice of the society in which he moved covered the normal content of language with a social coating of convention. The phenomenon of politeness turns around this question of speech. In normal speech we should all maintain that we mean what we say, or at least that we say more or less what we mean. But social speech does almost the opposite. It conceals meaning and thus is a tyranny. Men have to say they are 'delighted' when they are not; they have to praise those whom they do not admire; they have to conceal their real feeling. Molière's drama, by exposing this tyranny, relieves us of its strain and shows us countless situations in which conventions of speech break down. He situates his characters so that the veneer of politeness peels off like a crust, so that their animosity may have free play."

"...Comic drama elicits the utterance of what in most of us is buried, suppressed, unutterable..."



"...By such brilliant use of ironic language Molière was the liberator of his age. The practice of the society in which he moved covered the normal content of language with a social coating of convention. The phenomenon of politeness turns around this question of speech. In normal speech we should all maintain that we mean what we say, or at least that we say more or less what we mean. But social speech does almost the opposite. It conceals meaning and thus is a tyranny. Men have to say they are 'delighted' when they are not; they have to praise those whom they do not admire; they have to conceal their real feeling. Molière's drama, by exposing this tyranny, relieves us of its strain and shows us countless situations in which conventions of speech break down. He situates his characters so that the veneer of politeness peels off like a crust, so that their animosity may have free play."

M.B. Moore, *Molière: A New Criticism*, c. IV

CREW

LIGHT OPERATOR
SOUND OPERATOR
TECHNICAL PRODUCTION ASSISTANT
ASSISTANT STAGE MANAGER
ASSISTANT STAGE MANAGER
STAGE HAND
STAGE HAND
COSTUME CONSTRUCTION

WARDROBE

ASST. PROPS

MASTER ELECTRIC
LIGHT HANG

MASTER CARPENTER
CARPENTERS

POSTERS & PROGRAMS

Eli Hall
Nicole Pope
Beth Kessler
Becca Rideout
Chrissy Souder
Lorrane Bocker
Salihah Moore
Elizabeth Geller
Jessica Bruckner
Bobby Keniston
Eric Unger
Cheryl Cottrell
Kendra Kohrt
Monica Hubbard
Alex Betuel
John Boyd
Liana Conyers
Mary Donahue
Holly Matechi
Jason Myers
Ryan Nealon
Alethea Root
Tim Verras
Dannikke Walkker
Skye Bender-DeMoll
Shannon West
Andrew Woods
Alethea Root
Hans Buetow
Kati Bicknell
K.J. Swanson
Josie Lawlor
Martha Bernabe
Liz Clayman
Dan Grossman
Anna Johnson
Dan Sokal
Morgan Bender-DeMoll
Amber Stanton