

# Sage City Symphony

Louis Calabro, Musical Director

June 3, 1990

8:00 pm

Greenwall Music Workshop  
Bennington College

Overture to the  
Barber of Seville.....G. Rossini  
(1792-1868)

Two Arias from  
"The Marriage of Figaro".....W. A. Mozart  
(1756-1791)

*Non so piu cosa son*  
*Voi che supete*

Susan Swan, soprano

Poem for  
Flute and Orchestra.....C. T. Griffes  
(1884-1920)

Mandy Kent, flute

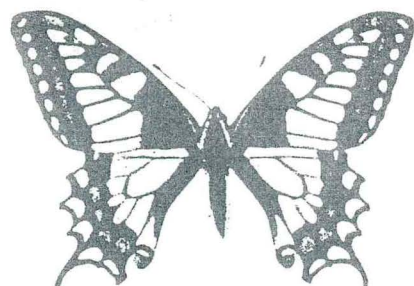
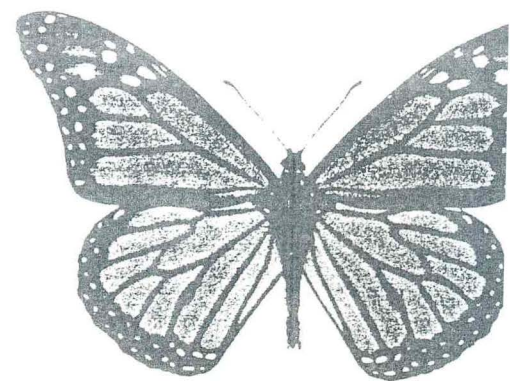
Symphony No. 5, Op. 107  
"The Reformation".....F. Mendelssohn  
(1809-1847)

Andante; Allegro con fuoco  
Allegro vivace  
Andante  
Choral; Allegro vivace



THANKS to our DONORS

CVS	Mt. Anthony Country Club
A & P	Park McCullough House
Percy's	Williams Smoke House
K - Mart	Ophthalmic Consultants
Panache	Bennington Bookshop
Brasserie	Whitman's Feed Store
Geannelis	Bennington Museum
Michelle's	Occasionally Yogurt
Susie Reiss	Bennington Station
McDonalds	West Mountain Inn
The Villager	Nuns of New Skete
Ramada Inn	The Publyk House
Marty Moore	Frances Benjamin
Grand Union	Ashwood Nursery
Curl 'n' Swirl	Sheila Richmond
Janice Messer	Bennington Pizza
Price Chopper	Alldays & Onions
Bonnie Holden	Main Street Cafe
Mary Madkour	Blue Benn Diner
The Apple Barn	Main Attraction
VT Steak House	Hawkins House
Bennington College	Fairdale Farms



THANKS to our VOLUNTEERS

David Banulis	Joan Bort
Finnegan Calabro	Max Calabro
Patty Damon	Willie Finckel
Adelaide Fine	Christine Graham
Sally Matern	Lesley McFadden
Leslie Morris Noyes	Shiela Richmond
Muriel Rowe	Kit Scribner
Geri Thompson	Constance Weil
Otto Weil	Peggy Worthington

THANKS for your SUPPORT

Sage City Symphony is supported by the Vermont Council on the Arts, the Town of Bennington, the Town of North Bennington, the Town of Shaftsbury, and numerous generous individuals. Contributions are always welcome and can be sent to:

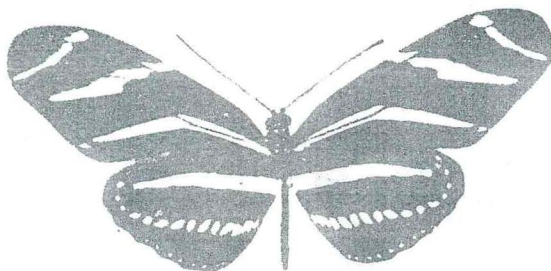
Sage City Symphony  
PO Box 547  
Shaftsbury, VT 05262

### ABOUT our SOLOISTS

Mandy Kent, a native of Cambridge, NY, is a graduate of the Crane School of Music and has done graduate work at the Eastman School of Music. She has performed as a chamber musician, taught, and played with orchestras in the New York City area and in Seattle, Washington. She has been a frequent performer for concerts and other special occasions locally, since her return to this area a decade ago. She says that although the flute is her first, and perennially her foremost instrument, she has been a multi-instrumentalist since grade school (often found in Sage's string section), and she performs in the folk idiom as well as the classical. She is intensely interested in ethnomusicology, the music of all cultures. Mandy is a founding member of the well-known Wildwood Chamber Players and the recently formed Maple Wind Quintet. She has been a member and staunch supporter of the Sage City Symphony for ten years, and currently serves on its Board of Directors.



Susan Swan has been singing in small groups since she was a child. She began studying voice seriously after completing graduate school. In Boston, she sang with the Harvard Chorus, the Cecilia Society, and the Cantata Singers. Last year, she participated in The Bennington Voice Workshop and the Williamstown Theater Festival. She has worked as an educator in various colleges in Boston and Indiana and is now teaching English at Southern Vermont College.



Sage City Symphony  
Louis Calabro, Music Director

VIOLIN I

John Swan, Concertmaster  
Harriet Welther  
Otto Weil  
Anne Wallace-Senft  
Tamara Wallace-Senft  
Marcella Rauscher  
Guy Rauscher  
Thomas Yang  
Susie Reiss

VIOLIN II

Juliana Gnoutcheff, principal  
David Bort  
David Scribner  
Barbara Layden  
Adelaide Fine

VIOLA

Louis Tavelli, principal  
Dorothy Wallace-Senft  
Kathy Cunningham

CELLO

Martha Hardy, principal  
Demetria Koninis-Washburn  
Constance Weil  
Emily Sprague  
Bart Arnold  
Jason McDermott

BASS

Jim Fitzgerald  
Kristopher Faris

FLUTE

Mandy Kent, principal  
Christine Graham, piccolo  
Elizabeth Gustafsson

OBOE

Michelle Lehman, principal  
Betsy Colt

CLARINET

Ray Willard, principal  
Maeve Richmond  
Rebecca Rodriguez

BASS CLARINET  
& HARP SYNTHESIZER

Paul Opel

BASSOON

Susan Lathrop, principal  
Meredith Hadlock

HORN

Maria Lattimore, principal  
Elisabeth Hadlock

TRUMPET

Garry Sharon, principal  
John Matern

TROMBONE

Ted Wright  
Shawn Brice

BASS TROMBONE

Elwin Bentley

TIMPANI

Jonathan Klein

